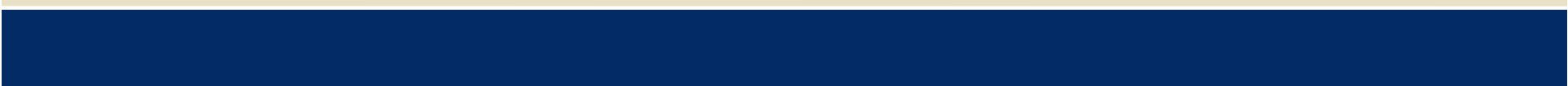
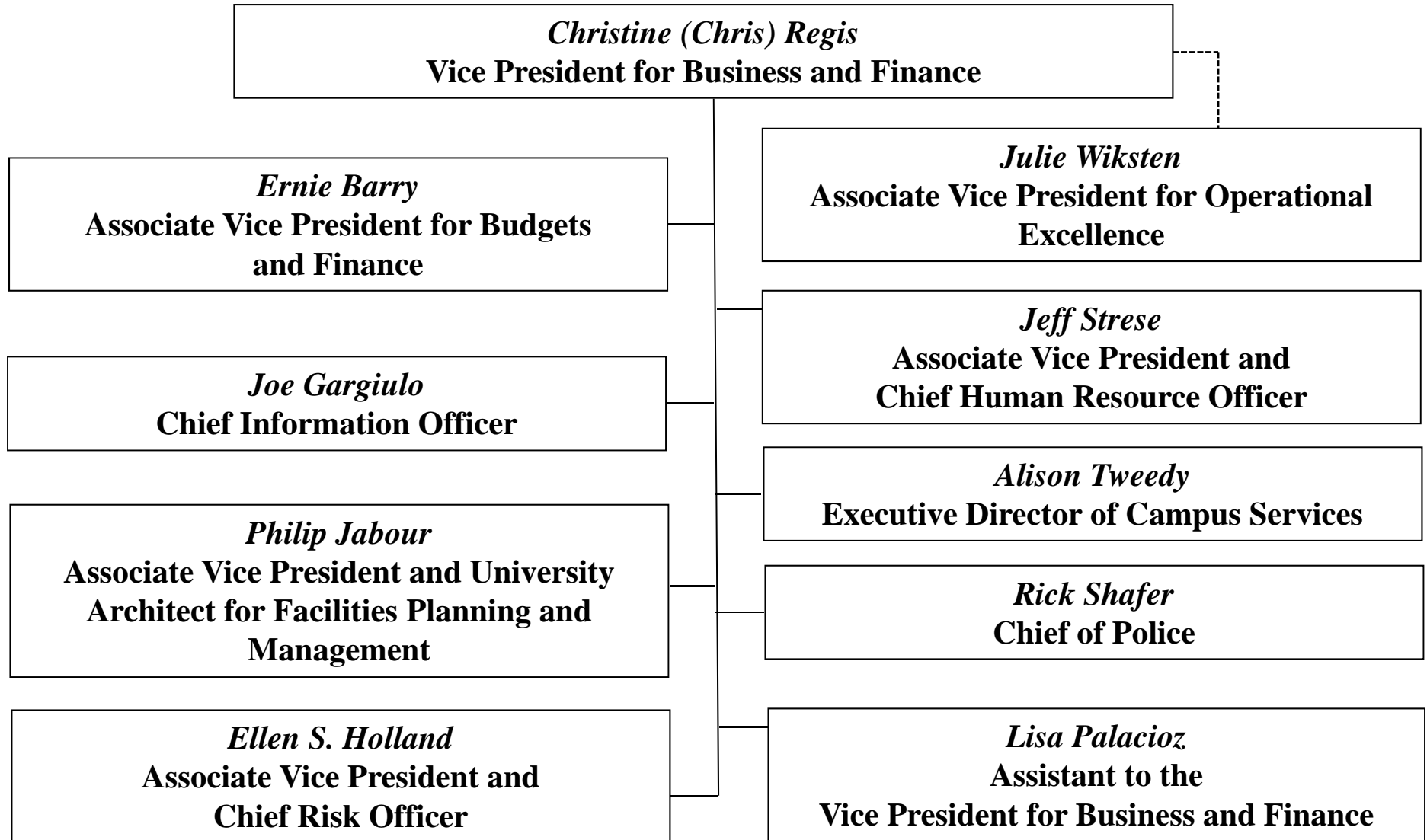


Chris Regis, Vice President for Business and Finance

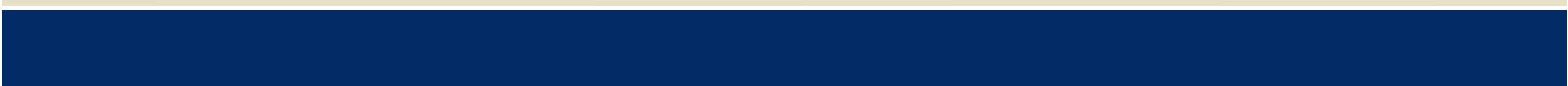
Career Path

- Career began in Higher Education in 1993
 - *Western New Mexico University (WNMU)* between 1993 – 2005
 - Internal Auditor
 - Controller
 - Vice President for Business and Administration
 - *University of California system*
 - Office of the President between 2005 – 2007
 - *Southern Methodist University*
 - Vice President for Business and Finance since 2007
-
- 

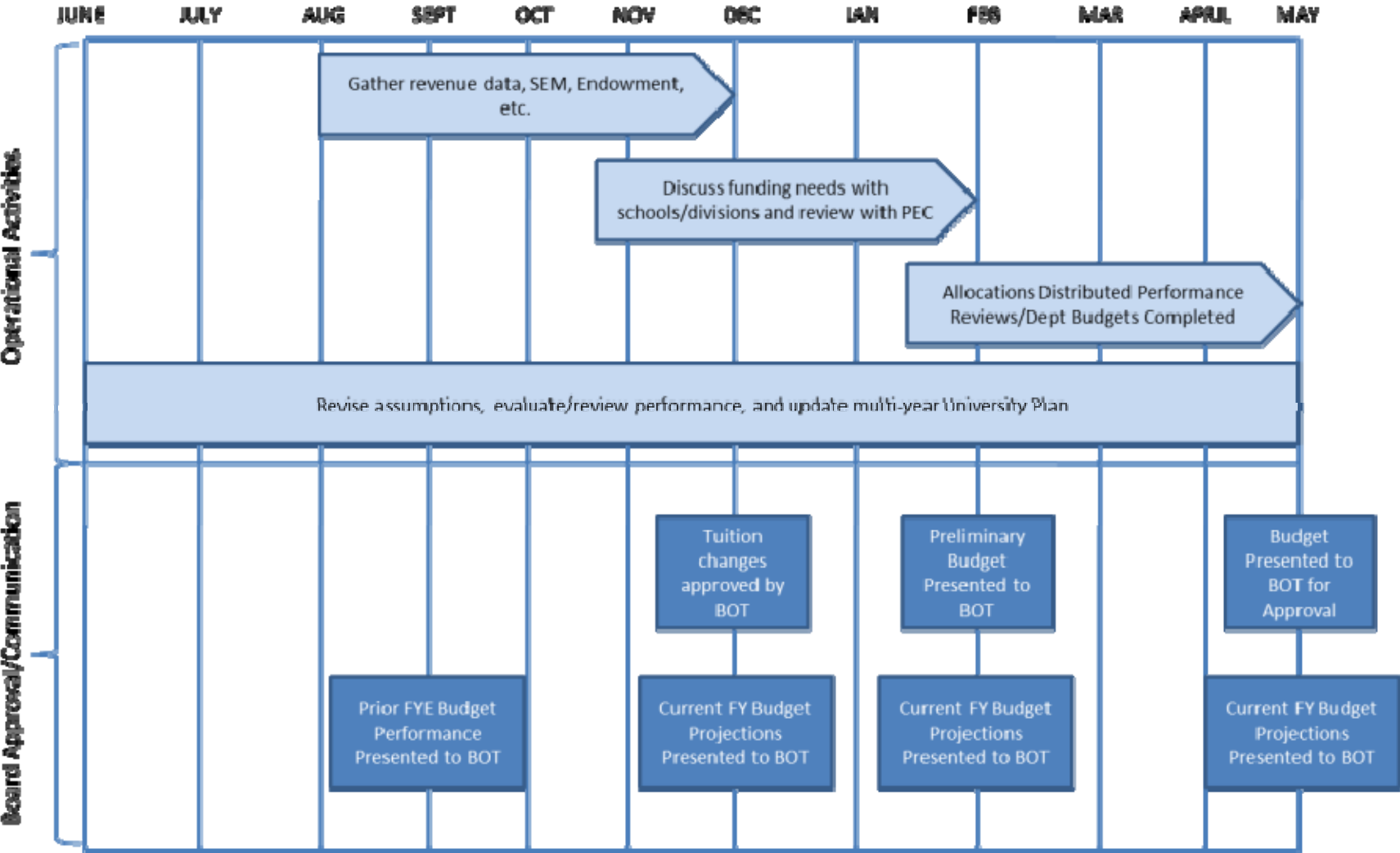
Office of the Vice President for Business and Finance



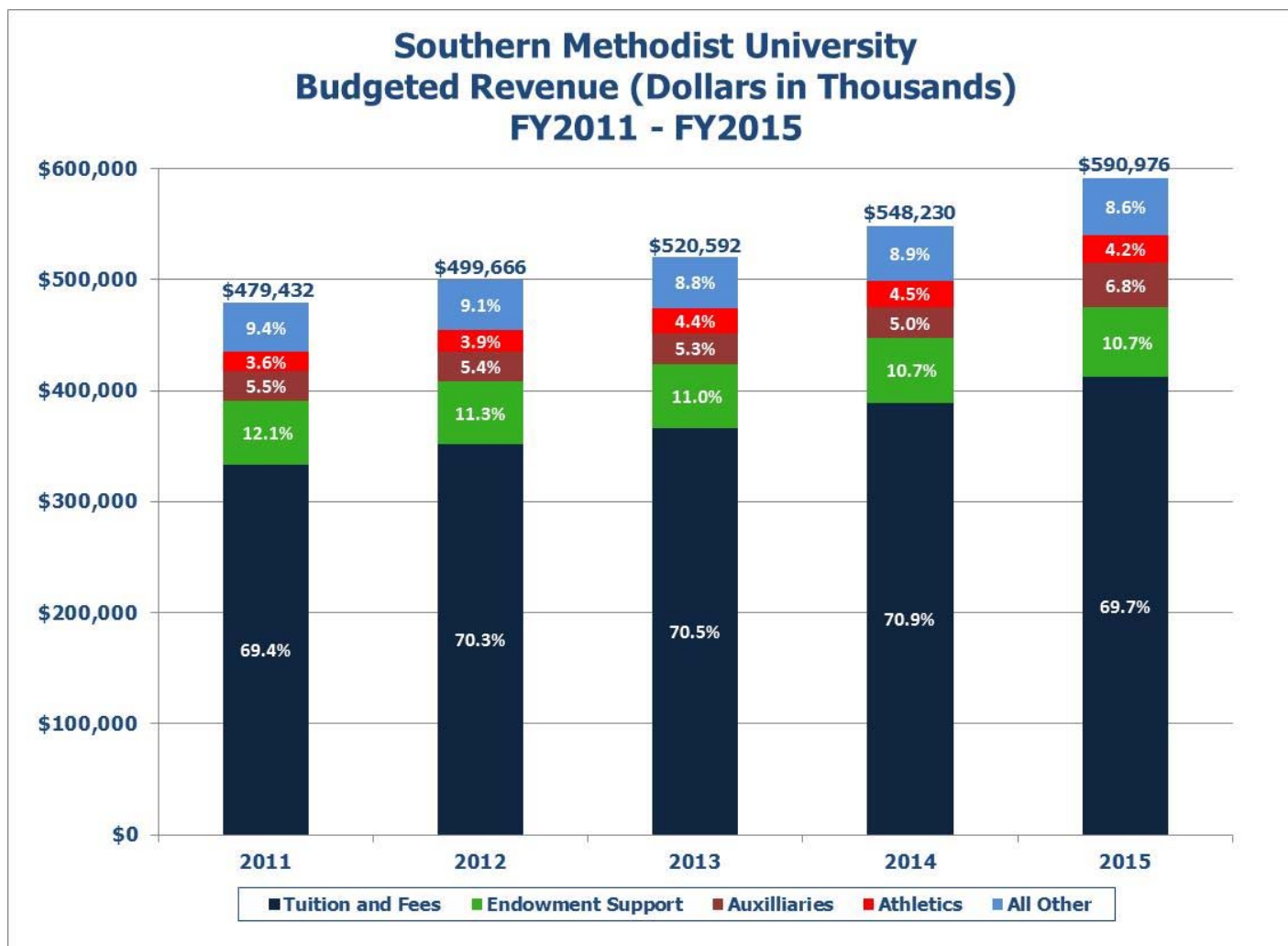
Budget and Finance Office

- Financial Accounting
 - Accounts Payable
 - Grant & Contract Accounting
 - Financial Systems Support
 - Asset Management
 - Payroll
 - Tax Compliance
 - Purchasing
 - Budget
-
- 

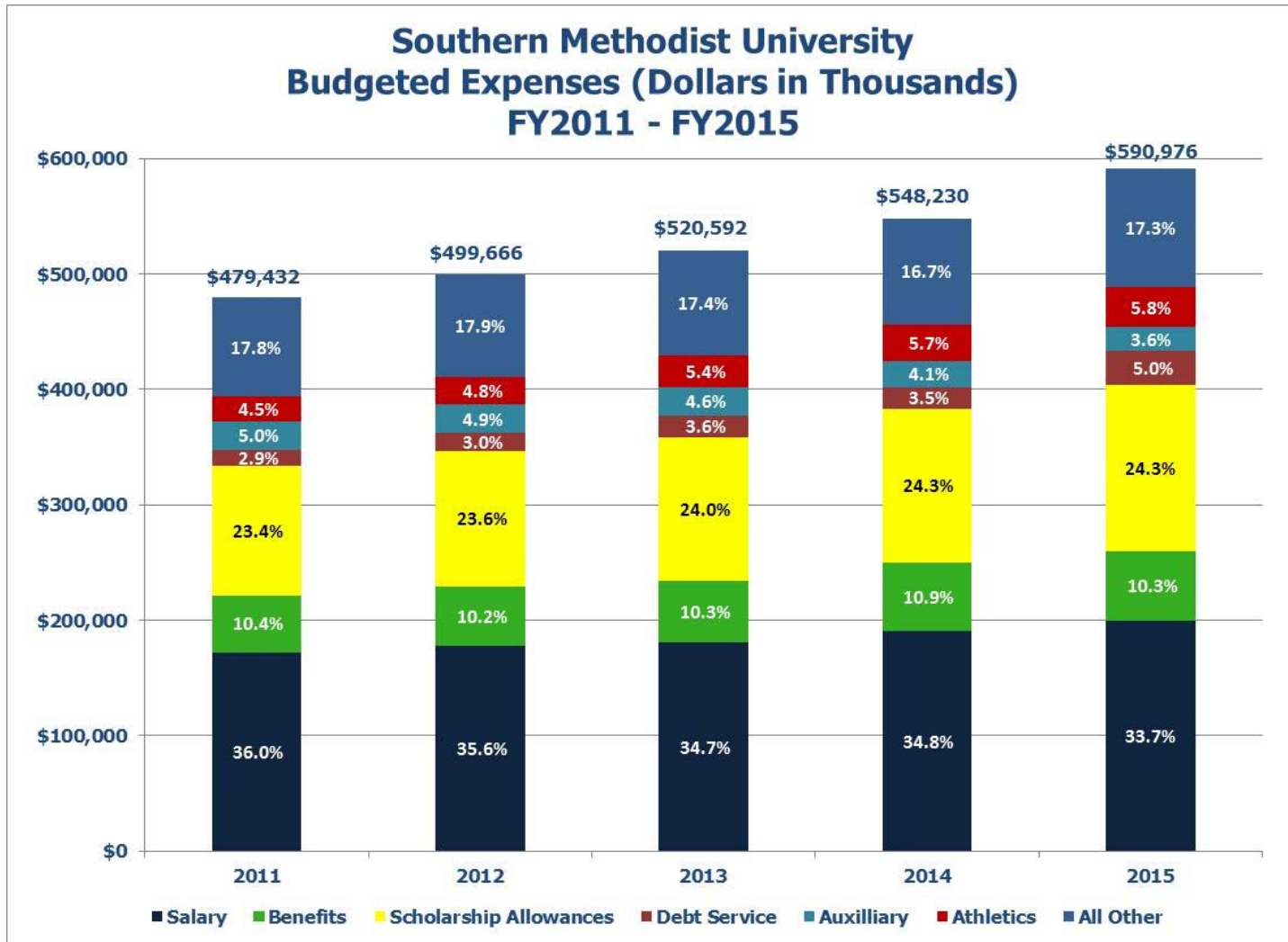
Budget Cycle



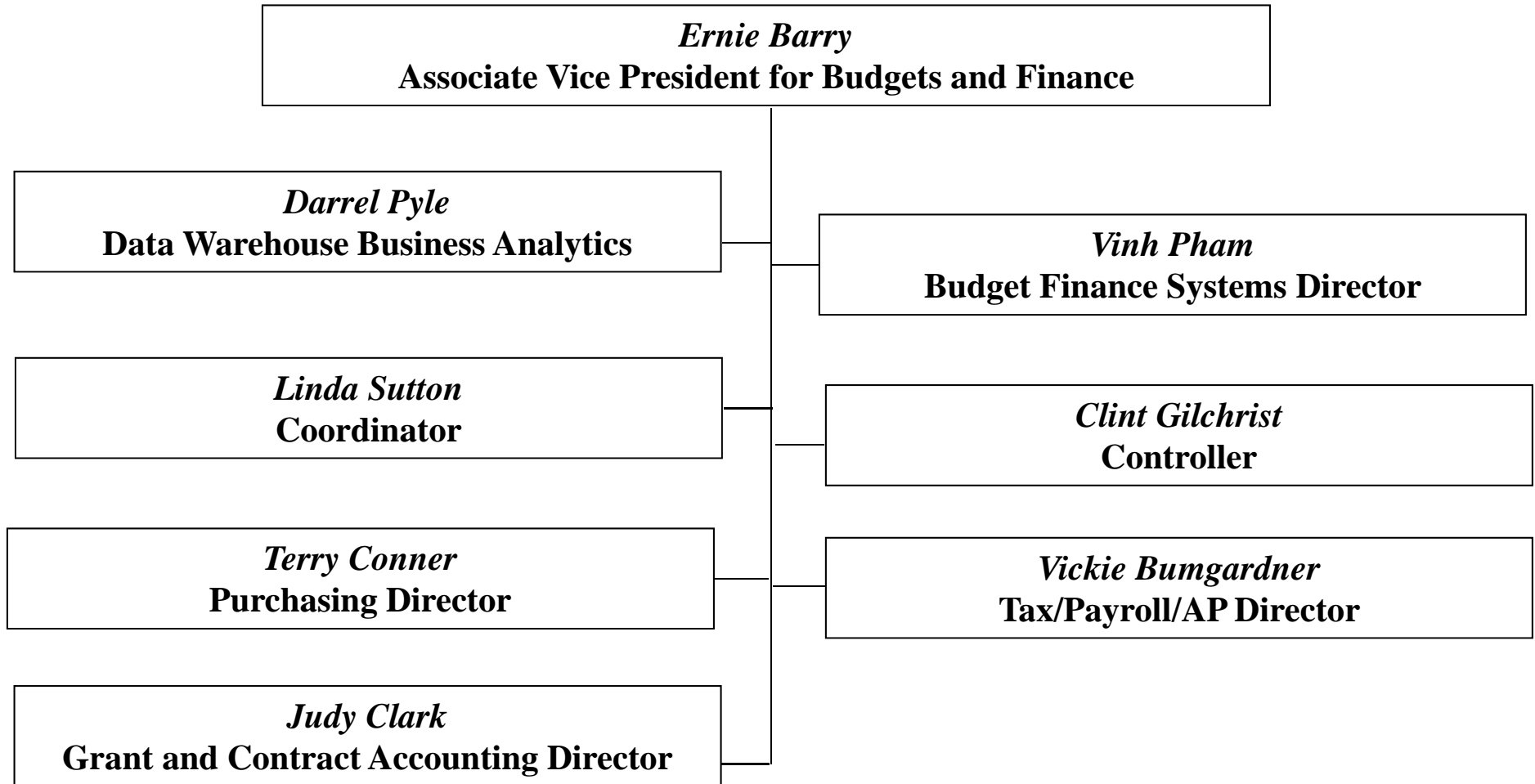
Budgeted Revenue



Budgeted Expenses



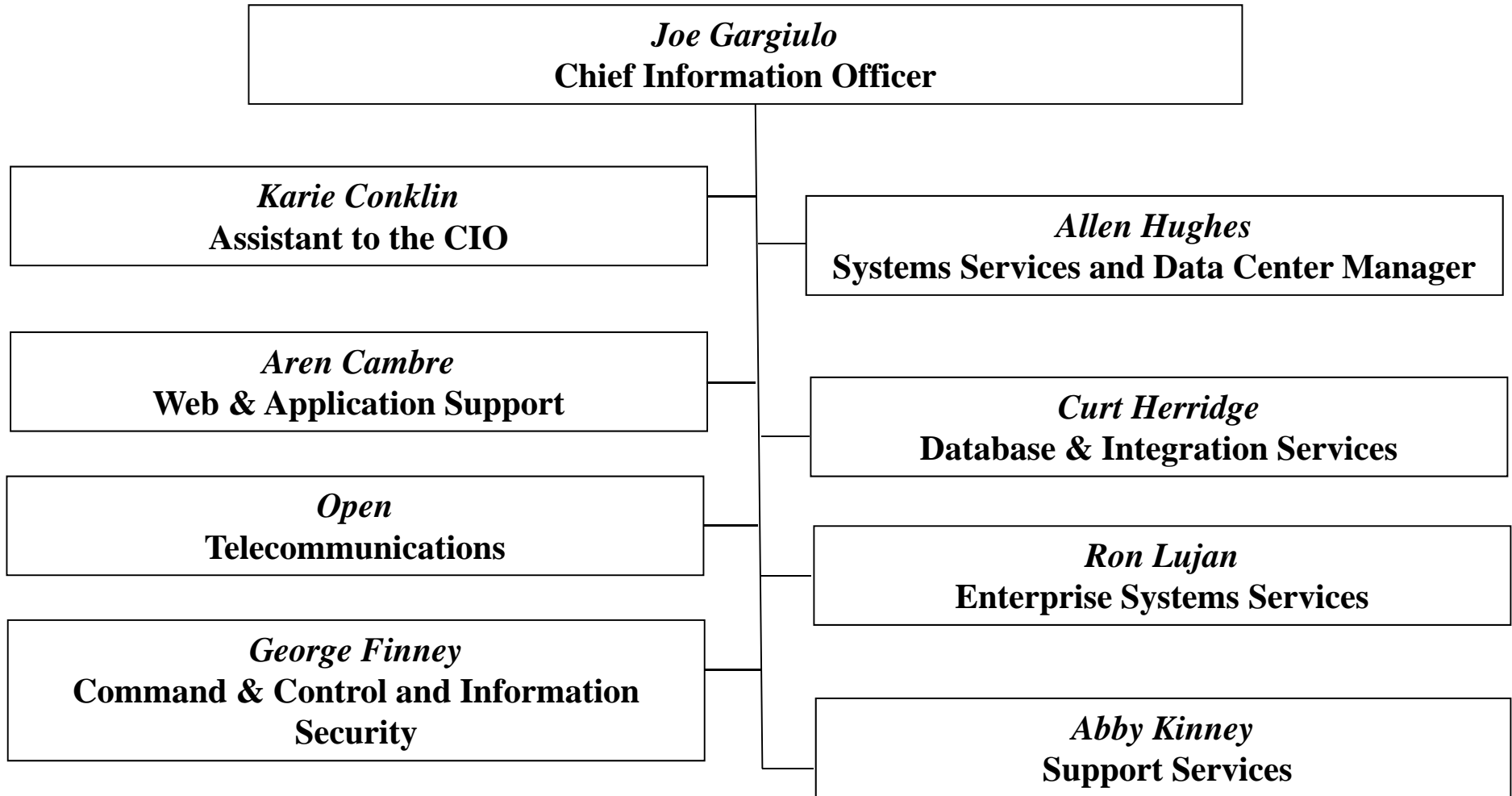
Budget and Finance Office



Office of Information Technology

- Web & Application Support
 - Systems Services and Data Center Manager
 - Database & Integration Services
 - Enterprise Systems Services
 - Support Services
 - Command & Control and Information Security
 - Telecommunications Services
-
- 

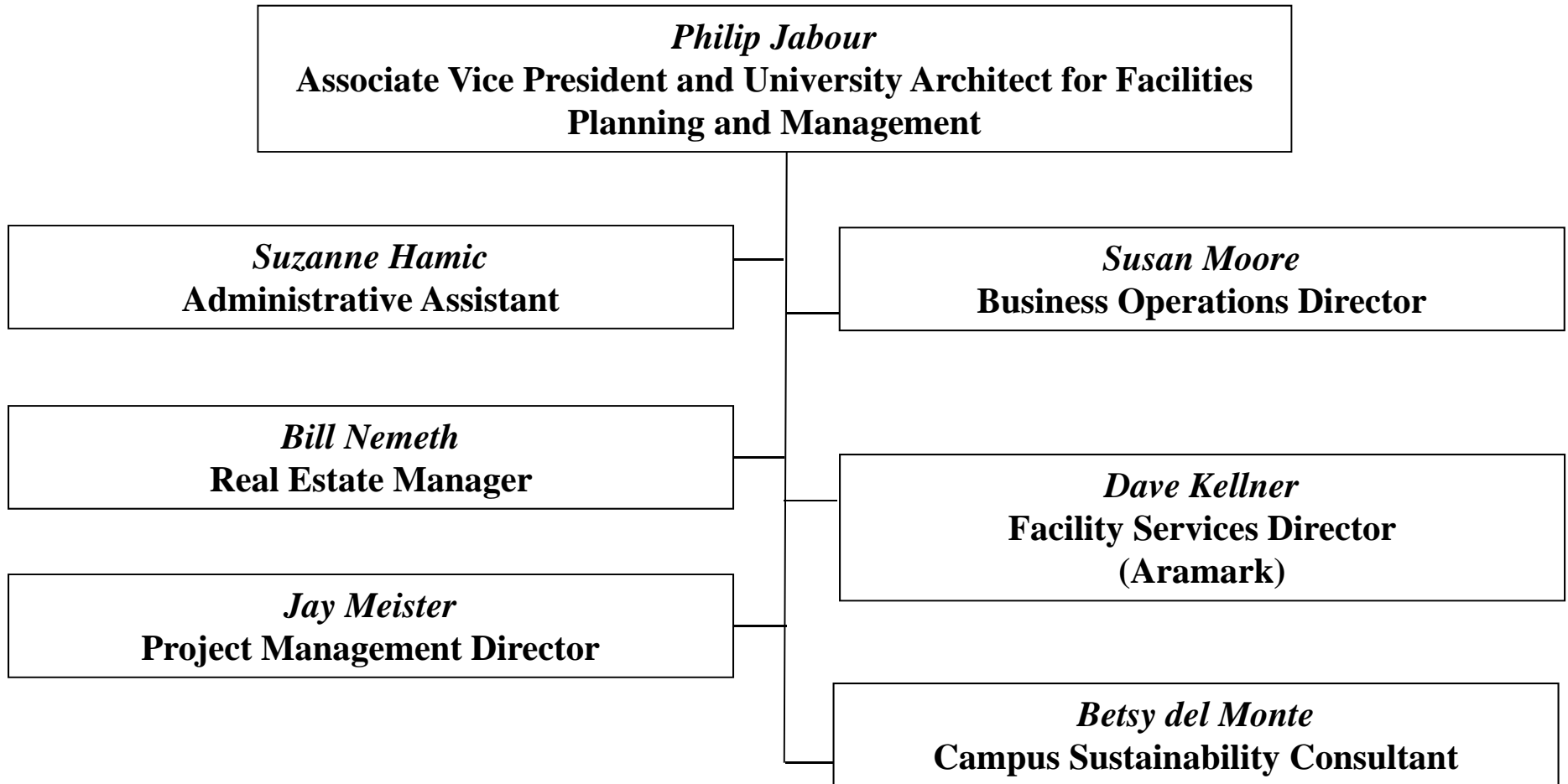
Office of Information Technology

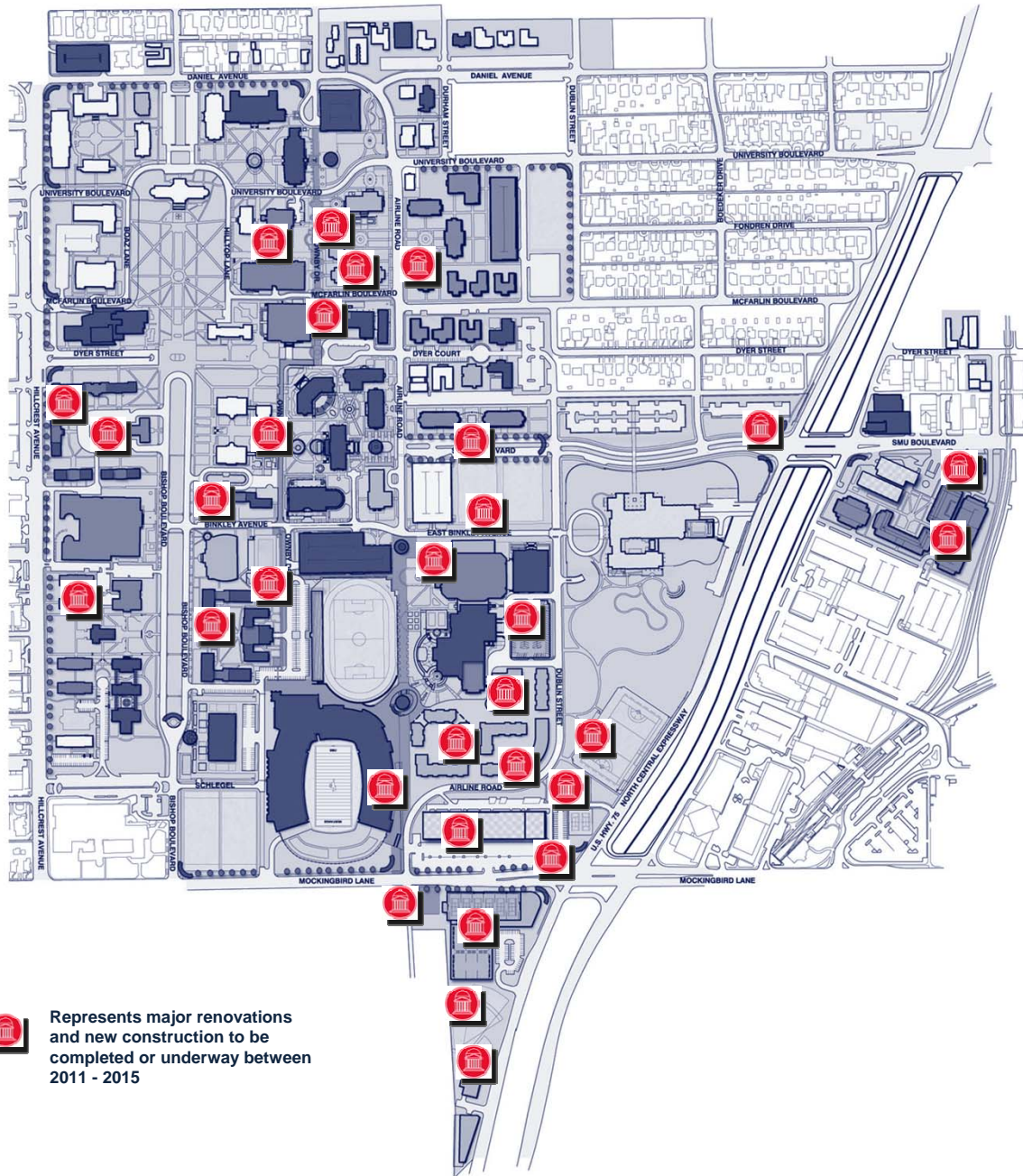


Facilities Planning and Management

- Project Management
 - Facilities Services
 - Real Estate
 - Sustainability
-
- 

Facilities Planning and Management





SMU Dallas Main Campus

Total Acreage: 234 acres

**Main Campus at 219 acres
East Campus at 15 acres**

Total Buildings: 96

Total Building Area: 6,000,000 SF (approx.)

LEED Buildings: 13

LEED Interiors: 1

Jurisdictions: City of University Park, City of Dallas, and Town of Highland Park

SMU-in-Plano

Total Acreage: 25 acres

Total Buildings: 4

SMU-in-Taos

Total Acreage: 423 acres

Total Buildings: 31

LEED Buildings: 7



Represents major renovations and new construction to be completed or underway between 2011 - 2015

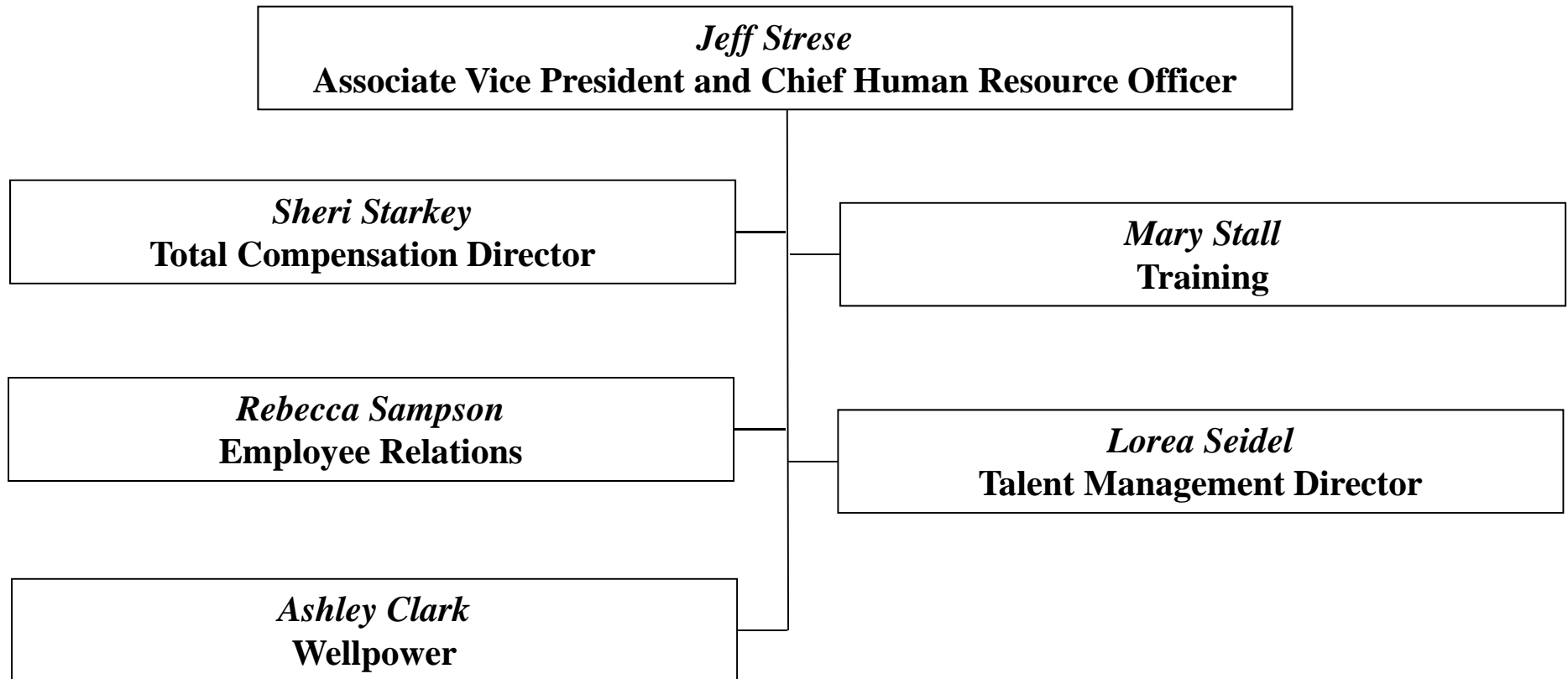
SMU Dallas Main Campus by 2015

Human Resources

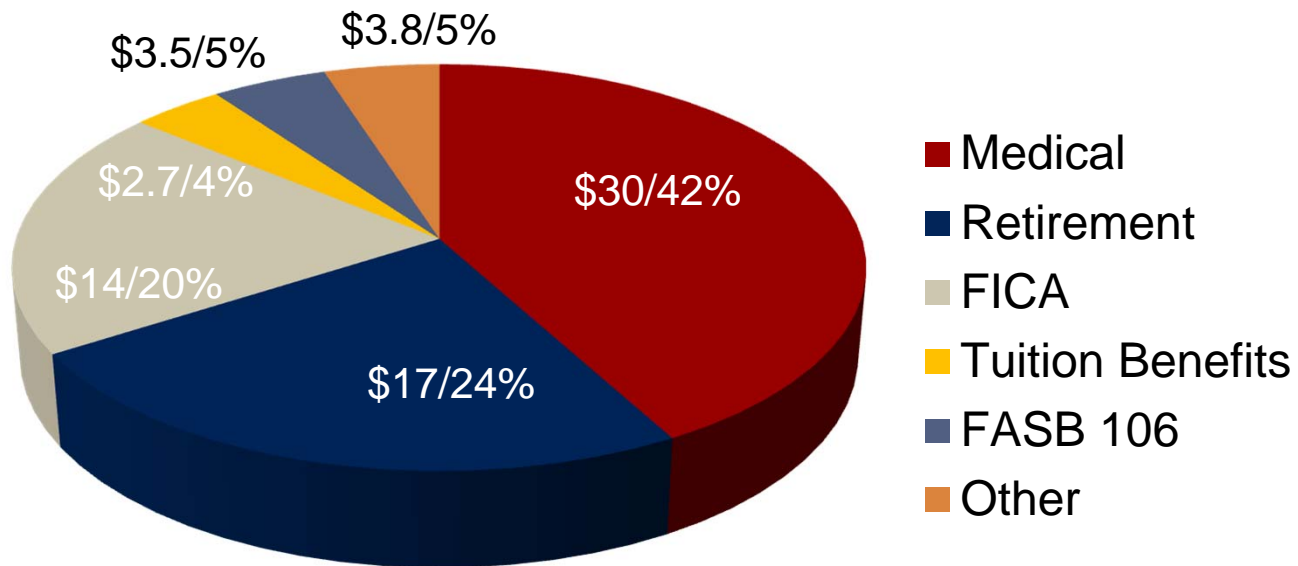
Human Resources provides support, education, and services to the SMU community in the following areas:

- Total Compensation
 - Employee Relations
 - Training
 - Talent Management
 - Wellpower
-
- 

Human Resources



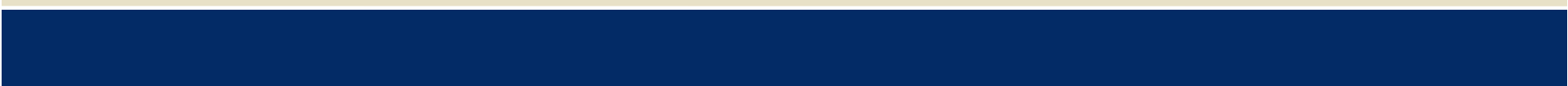
Benefits Budget (\$ in millions) - \$71 million



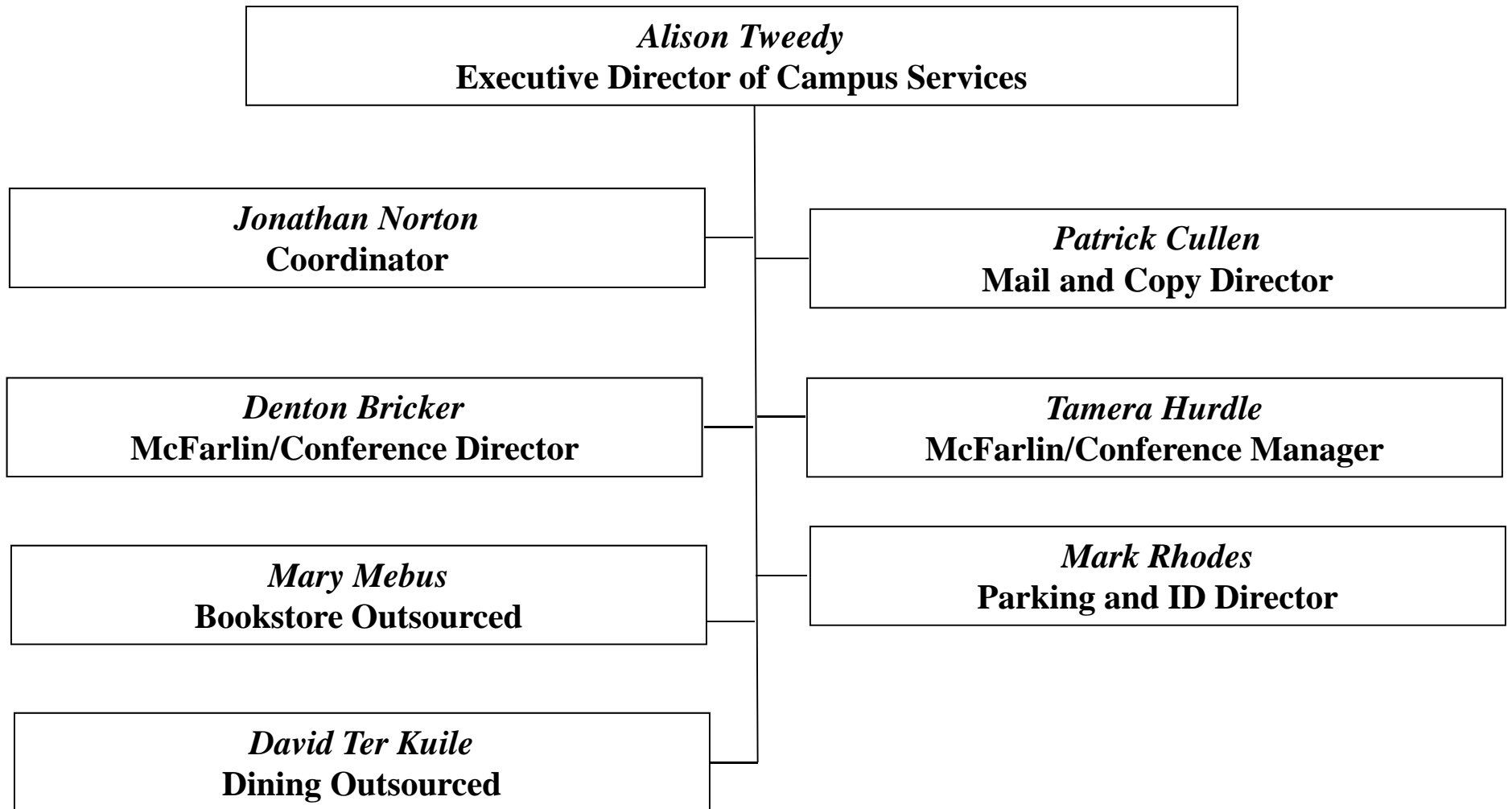
32% of Salary in 2015

40% of Salary Projected in 2022

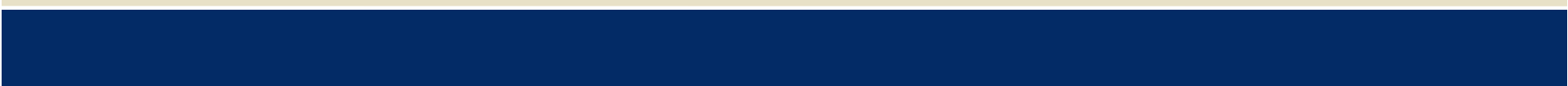
Campus Services

- Bookstore
 - McFarlin Auditorium
 - Parking & ID Card Services
 - Vending
 - Mail & Copy Central
 - Dining Services
 - Conference Services/Conference Planning
-
- 

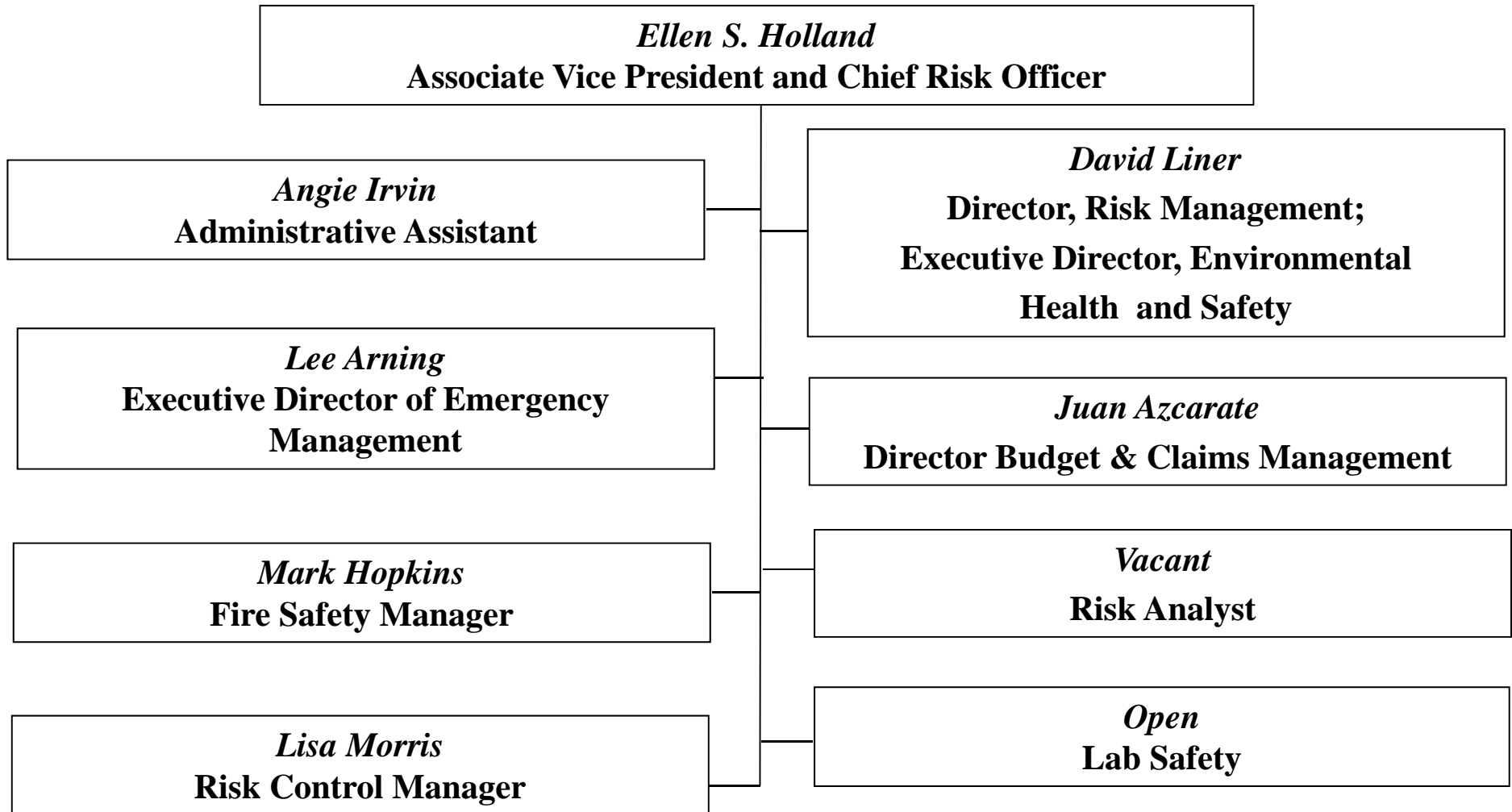
Campus Services



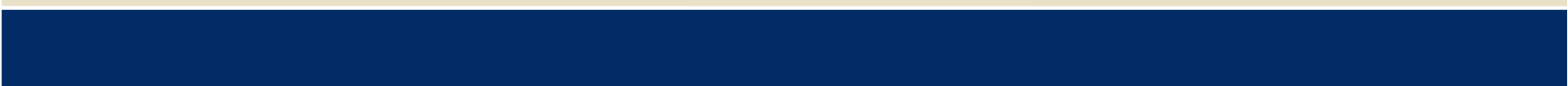
Office of Risk Management

- Emergency Preparedness
 - Environmental Health and Safety
 - International Safety
 - Insurance Programs
 - Accident Reporting and Investigation
 - Workers' Compensation
 - Business Continuity Planning
-
- 

Office of Risk Management



Police Department

- Patrol Operations
 - Criminal Investigations
 - Communication
 - Bush Center Security
 - Training
 - Administration
-
- 

Police Department

