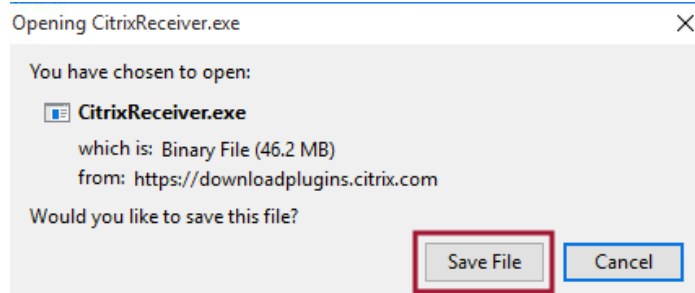
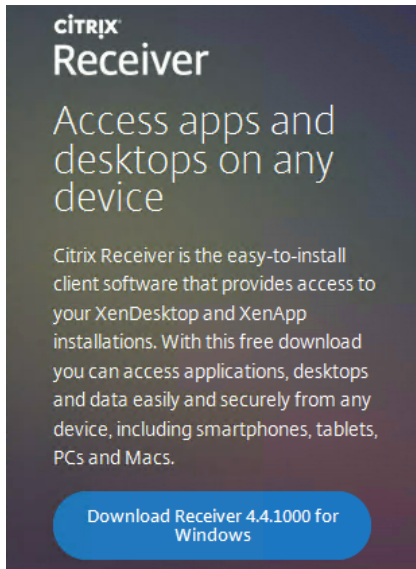
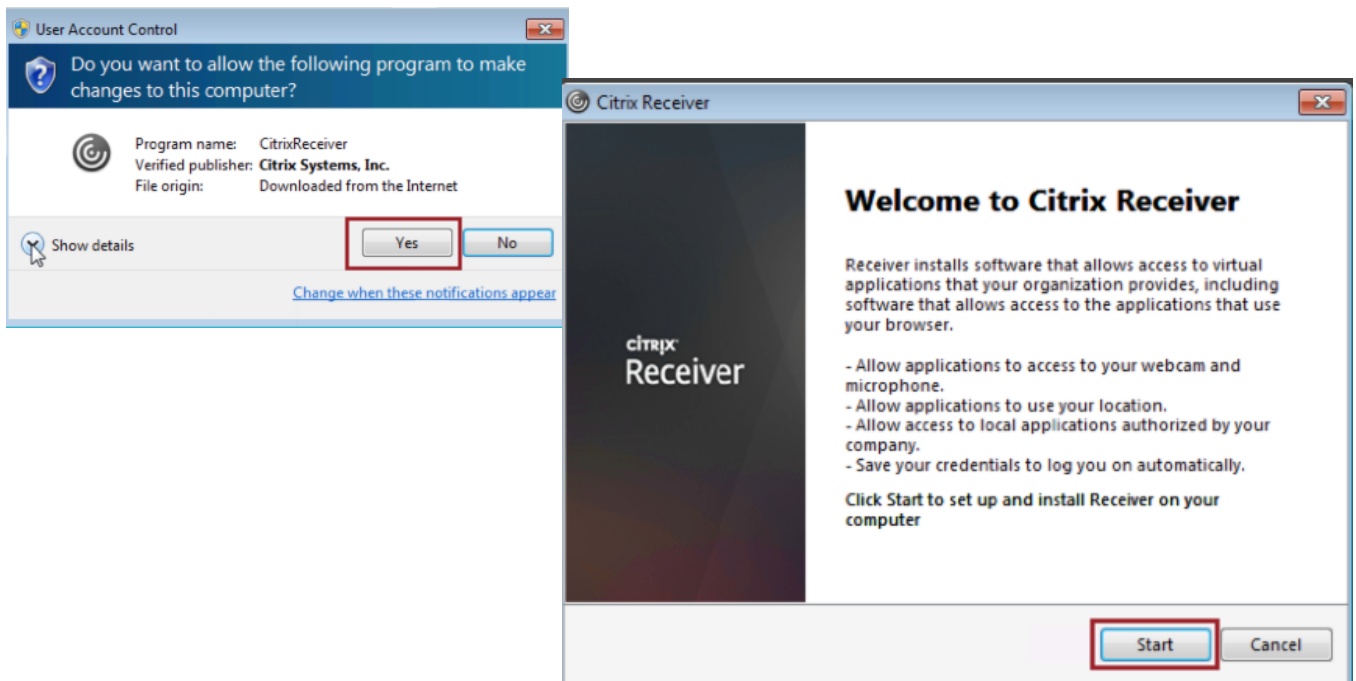


Installing Citrix Receiver (Windows)

1. In your preferred web browser, download [Citrix receiver](#) on your workstation or laptop/notebook.

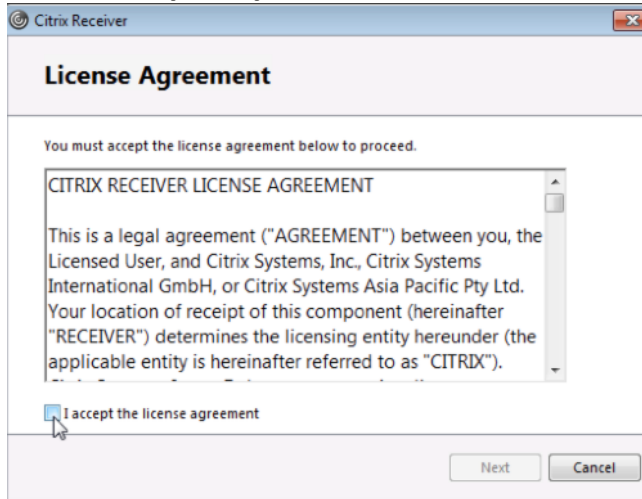


2. Double-Click the downloaded install file to start *'Install Citrix Receiver'*

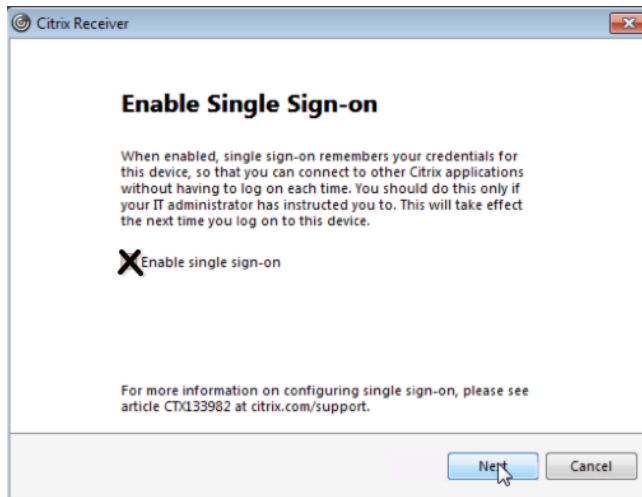


3. Follow installation prompts

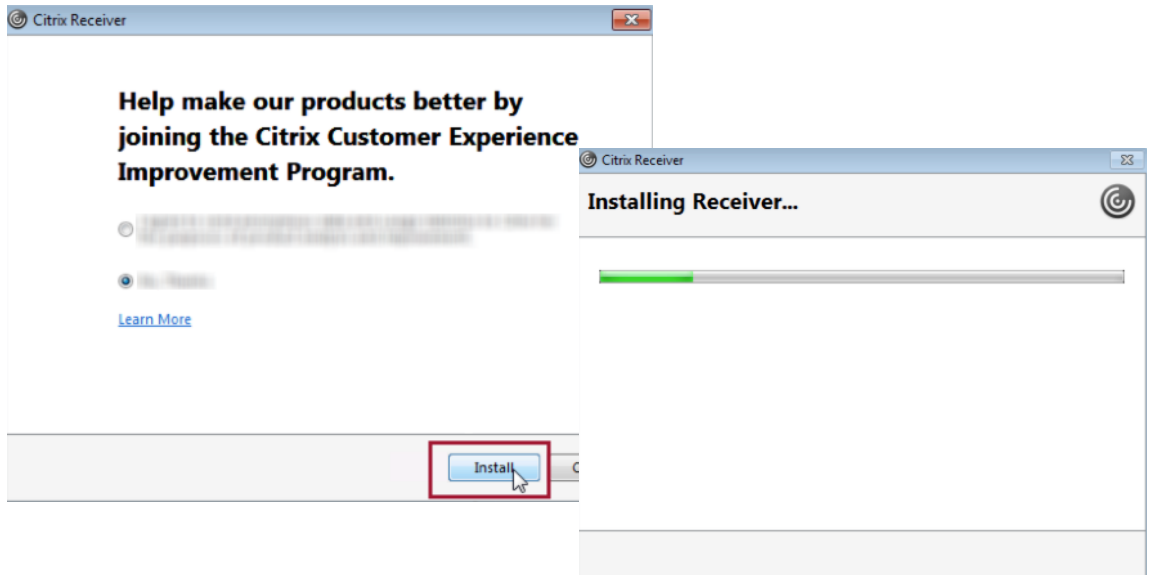
a.



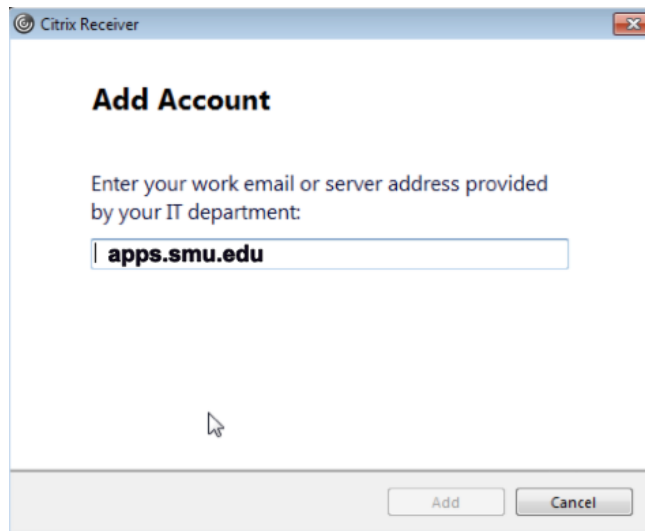
b. Do not select 'enable single sign-on'



c.



d. Add Account by entering *apps.smu.edu*



4. Launch Citrix Receiver from the Applications folder

5. When you see the prompt to 'add account,' type in *apps.smu.edu* and login using your SMU ID / Password

