

# ANTHROPOLOGY

## FALL 2021 Graduate Courses

**ANTH 5334 HISTORY OF ANTHROPOLOGY, PART 1.** Analytical history of anthropology from the Classical period to the 20<sup>th</sup> century. Explains the content and development of theory, method, and interpretation.

3225 ANTH 5334 001 W 2:00-4:50p.m. HERY 407 Meltzer

**ANTH 5336 HEALTH IN CROSS-CULTURAL PERSPECTIVE.** Cross-cultural study of the cultural construction and social organization of medical systems in preindustrial and industrialized societies, including the political economy of health, ethnomedicine, international health, ethnopharmacology, and bioethics. *Prerequisites:* ANTH 3301, 3306, or approval of instructor.

3227 ANTH 5336 001 T 2:00-4:50p.m. HERY 407 Smith-Morris

**ANTH 5344 RESEARCH METHODS IN ETHNOLOGY.** Examination of methodologies and techniques appropriate for different types of ethnological research.

5099 ANTH 5344 001 Th 2:00-4:50p.m. HERY 407 Myers

**ANTH 6049 GRADUATE FULL-TIME STATUS.** (For students not yet advanced to candidacy).

2262 ANTH 6049 001 Meltzer

**ANTH 6301 PRINCIPLES OF ARCHAEOLOGY.** An advanced seminar course dealing with the fundamentals of modern archaeology.

5100 ANTH 6301 001 T 2:00-4:50p.m. HERY G06 Hollenback

**ANTH 6316 ADVANCED SEMINAR IN ETHNOLOGY I. ECONOMY AND MORALITY.** From the moral economies of southeast Asian peasants and anthropological critiques of *homo economicus* to the ethics of organ sales and the emergence of post-productivism in Africa, this seminar introduces graduate students to the rich cross-cultural and historical study of the relationship between economic processes – production, distribution, and consumption – and morality.

5101 ANTH 6316 001 M 2:00-4:50p.m. HERY 407 McKowen

**ANTH 6325/4325 INTRODUCTION TO OSTEOLOGY I: HUMAN-ANIMAL INTERACTIONS.** Explores the evolution of human and animal interactions through a comparative study and analysis of their skeletons. Examines variations in nature's grand design, including the origins of different skeletal features, the evolution of these features over time, and the ways humans influenced the development of many of these features through processes such as targeted hunting and selective breeding.

5102 ANTH 6325 001C M 2:00-4:50p.m. HERY G25 Lupo

**ANTH 7317 ARCHAEOLOGICAL RESEARCH STRATEGIES.** An examination of the logistics and strategies used in project development and fieldwork through project completion. Emphasis is upon individual student problems.

3228 ANTH 7317 001 Th 9:00-11:50a.m. HERY G25 Meltzer

**ANTH 7342 SEMINAR IN SOCIAL ORGANIZATION.** Intensive investigation of the statics and dynamics of both social organization and social structure in various populations across the globe.

5103 ANTH 7342 001 T 2:00-4:50p.m. HERY G25 Brettell

**ANTH 8049 GRADUATE FULL-TIME STATUS.** (For students who have passed doctoral qualifying examinations).

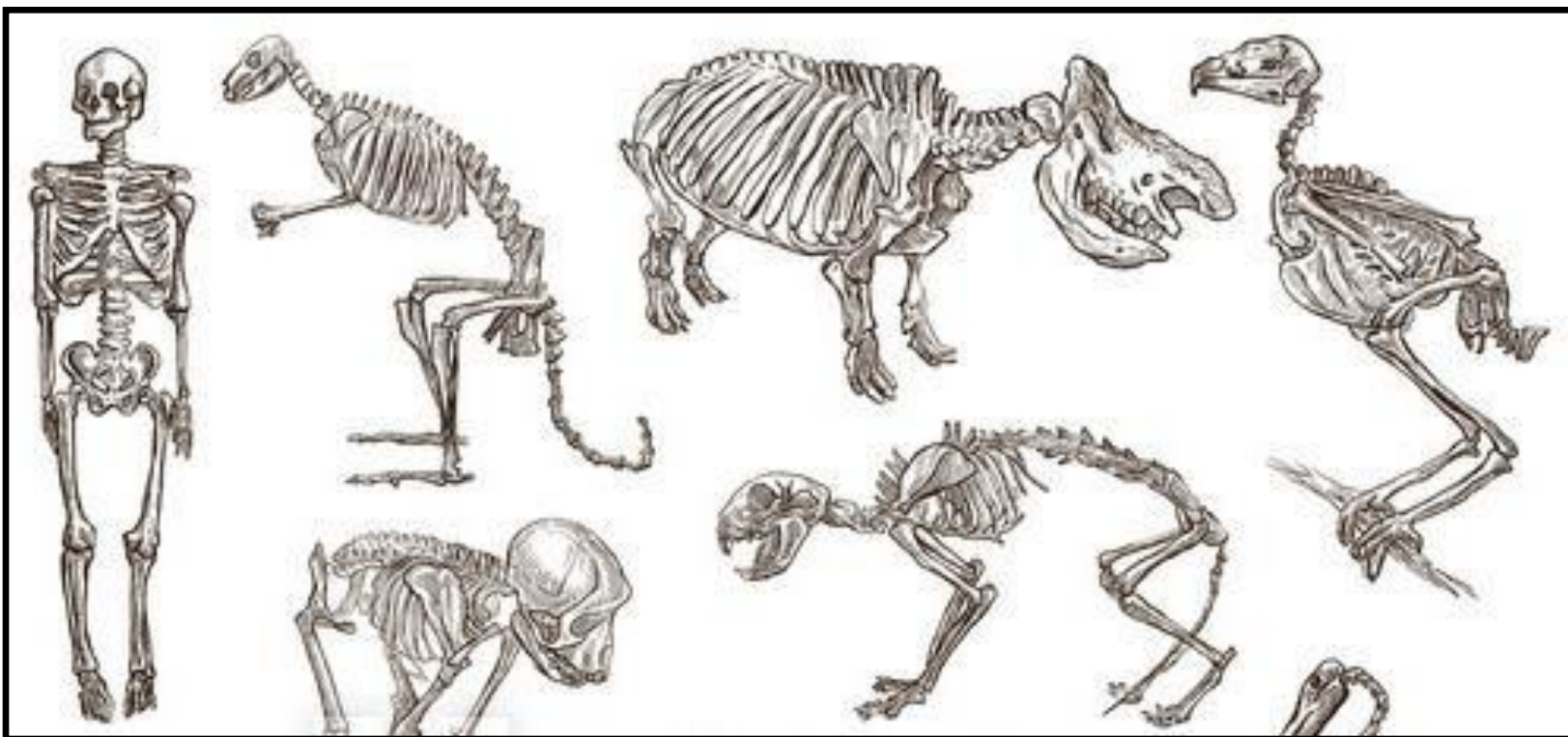
2062 ANTH 8049 001 Meltzer

**ANTH 8105 RESEARCH.** For graduate students who have completed their course work.

2345 ANTH 8105 001 Meltzer

---

Questions? Call the Anthropology Department at 214-768-2684 or visit our website at <http://www.smu.edu/anthro/>



**evolution.**

**bones.**

**comparative anatomy.**

**ANTH 4325/6325**

**Introduction to Osteology I: Human-Animal Interactions**

Fall 2021 – M – 2:00-4:50pm

Explores the evolution of human and animal interactions through a comparative study and analysis of their skeletons. Examines variations in nature's grand design, including the origins of different skeletal features, the evolution of these features over time, and the ways humans influenced the development of many of these features through processes such as targeted hunting and selective breeding. Introduces the science of taphonomy in hands-on learning labs. Students learn how isotopic and biomolecular analyses of animal skeletal remains help in understanding human-animal interactions.



**anthropology's.  
disciplinary.  
origins.**

**ANTH 5334**

**History of Anthropology, Part 1**

Fall 2021 – W – 2:00-4:50pm

Analytical history of anthropology from the Classical period to the 20th century. Explains the content and development of theory, method, and interpretation.



health and illness.  
culture.  
perspective.

## **ANTH 5336**

### **Health in Cross-Cultural Perspective**

Fall 2021 – T – 2:00-4:50pm

Cross-cultural study of the cultural construction and social organization of medical systems in preindustrial and industrialized societies, including the political economy of health, ethnomedicine, international health, ethnopharmacology, and bioethics.  
Prerequisites: ANTH 3301, ANTH 3306 or approval of instructor.



design.

explore.

qualitative methods.

## **ANTH 5344**

### **Research Methods in Ethnology**

Fall 2021 – Th – 2:00-4:50pm

Examination of methodologies and techniques appropriate for different types of ethnological research.



**foundational.  
method.  
theory.**

**ANTH 6301**

**Principles of Archaeology**

Fall 2021 – T – 2:00-4:50pm

An advanced seminar course dealing with the fundamentals of modern archaeology.



economy.  
morality.  
culture.

## **ANTH 6316**

### **Advanced Seminar in Ethnology I: Economy & Morality**

Fall 2021 – M – 2:00-4:50pm

From the moral economies of southeast Asian peasants and anthropological critiques of *homo economicus* to the ethics of organ sales and the emergence of post-productivism in Africa, this seminar introduces graduate students to the rich cross-cultural and historical study of the relationship between economic processes – production, distribution, and consumption – and morality.



formulating a problem.  
designing research.  
writing a proposal.

**ANTH 7317**

## **Archaeological Research Strategies**

Fall 2021 – Th – 2:00-4:50pm

An examination of the logistics and strategies used in project development and fieldwork through project completion. Emphasis is upon individual student problems.





**kinship.**

**marriage.**

**social networks.**

**ANTH 7342**

**Seminar in Social Organization**

Fall 2021 – T – 2:00-4:50pm

Intensive investigation of the statics and dynamics of both social organization and social structure in various populations across the globe.