

INTERNATIONAL STUDENT HANDBOOK

Southern Methodist University | 2023-2024



LETTER FROM THE ISSS DIRECTOR



Dear International Student/Scholar:

On behalf of the International Student & Scholar Services team (ISSS), I would like to welcome you to Southern Methodist University. You have chosen to attend one of America's premier comprehensive universities, and we are pleased that you are part of the SMU family. The SMU campus and community provide a variety of resources to ensure that your time here as a student or scholar is productive on both a personal and academic level. The International Student & Scholar Services team is committed to facilitating and enriching your experience before you arrive on campus and while you are here in the U.S. All members of the ISSS team work diligently to provide the best and most useful resources prior to your arrival through a comprehensive pre-arrival information packet that will assist the visa application process. Once you arrive on campus, we welcome you with various immigration orientations in order to inform you of the various visa compliance regulations that you must follow as an international student or scholar in order to maintain your visa status. Our team is responsible for reporting to the federal Government all compliance events relating to our international population through SEVIS (Student and Exchange Visitor Information System). For this reason it is important that you check your SMU e-mail regularly, since regulations sometimes change. Once you arrive, it is our desire that you take every opportunity to participate in our programming events. Our office coordinates several events throughout the year in order to celebrate the different cultures and contributions from our international population. Our staff consists of a group of professionals who are prepared to respond to your unique needs through our excellent immigration advising system. Our staff is also prepared to help you navigate through all the resources that SMU has to offer that will help you achieve your academic goals. Once again, welcome to SMU. We are happy that you are with us. Please contact any member of the ISSS team if you have any questions or concerns. If we do not know the answers to your questions, we will try to find someone who does.

Best Regards,

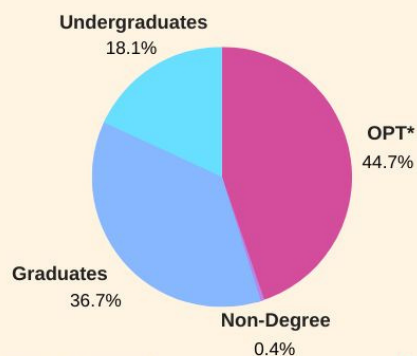
Claudia Sotomayor Hart

POPULATION BY COUNTRY, REGION

| | | | | | | | |
|---------------|-----|-------------|-----|--------------|----|----------------|----|
| Angola | 2 | El Salvador | 5 | Kyrgyzstan | 1 | Serbia | 3 |
| Argentina | 1 | Ethiopia | 2 | Latvia | 1 | Singapore | 2 |
| Australia | 14 | France | 7 | Lebanon | 8 | Slovakia | 1 |
| Bahamas | 1 | Germany | 9 | Libya | 3 | Slovenia | 1 |
| Bangladesh | 10 | Ghana | 2 | Lithuania | 1 | South Africa | 10 |
| Belarus | 1 | Greece | 5 | Malaysia | 2 | Spain | 9 |
| Belgium | 1 | Guatemala | 6 | Mexico | 39 | Sri Lanka | 9 |
| Bolivia | 1 | Haiti | 1 | Myanmar | 2 | Sweden | 3 |
| Brazil | 18 | Honduras | 10 | Nepal | 7 | Switzerland | 3 |
| Cambodia | 1 | Hungary | 1 | Netherlands | 4 | Tajikistan | 1 |
| Canada | 32 | Iceland | 1 | New Zealand | 6 | Tanzania | 2 |
| Chile | 2 | India | 273 | Nicaragua | 2 | Thailand | 5 |
| China | 492 | Indonesia | 7 | Nigeria | 18 | Turkey | 10 |
| Hong Kong | 3 | Iran | 35 | N. Macedonia | 1 | United Kingdom | 17 |
| Taiwan | 24 | Ireland | 1 | Norway | 2 | Venezuela | 3 |
| Colombia | 12 | Israel | 2 | Pakistan | 12 | Vietnam | 26 |
| Congo | 2 | Italy | 10 | Panama | 6 | Zimbabwe | 3 |
| Costa Rica | 2 | Japan | 4 | Peru | 6 | | |
| Cote d'Ivoire | 8 | Jordan | 5 | Philippines | 2 | | |
| Cyprus | 1 | Kazakhstan | 2 | Poland | 5 | | |
| Denmark | 2 | Kenya | 5 | Romania | 1 | | |
| Ecuador | 4 | Korea, S. | 28 | Russia | 2 | | |
| Egypt | 12 | Kuwait | 3 | Saudi Arabia | 31 | | |

86

COUNTRIES,
REGIONS
REPRESENTED



Non-Degree 6
Undergraduate 243
Graduate 600
Optional Practical Training* 491

*Students working in their field of study

TOTAL 1,340



TOP COUNTRIES, REGIONS REPRESENTED

1. CHINA
2. INDIA
3. MEXICO
4. IRAN
5. CANADA

58.2% male 41.8% female

What's Inside?

Get to Know Your New Home

| | |
|--|---|
| Life in Dallas, Texas | 5 |
| Q&A with International Mustangs | 6 |
| Becoming a Part of the SMU Community | 7 |
| Our Favorite SMU Traditions | 8 |



Getting Ready for Your Arrival

| | |
|--------------------------------------|----|
| Welcome New Students | 9 |
| Steps to Receive your I-20 | 10 |
| Getting Ready for Your Arrival | 11 |
| How to Pack for SMU | 12 |
| Packing Must Haves | 13 |

Navigating Living in the U.S.

| | |
|--------------------------------------|----|
| Once You've Arrived in the U.S. | 14 |
| ISSS Office | 15 |
| Transportation in the U.S. | 16 |
| State ID and Drivers License..... | 17 |
| U.S. Laws and Safety | 18 |
| Emergency Resources | 19 |
| Emergencies: Know What To Do | 20 |

Student Success and Useful Information

| | |
|---|----|
| Health and Wellness | 21 |
| Local Religious Centers | 22 |
| Achieving Academic Success at SMU | 23 |
| Student Tips for Class Registration | 24 |
| Job Prep and Employment | 25 |
| SSN, ITIN, and Taxes | 26 |
| On-Campus Dining Facilities | 27 |
| Eating Vegetarian at SMU | 28 |
| Ethnic Grocers and Restaurants..... | 29 |
| Local Grocery Stores | 30 |
| On-Campus Mail Facilities | 31 |
| Banking | 32 |
| Phones in the U.S. | 33 |
| Healthcare Resources | 34 |

LIFE IN DALLAS, TEXAS



POPULATION: Dallas is the **9th largest city** in the US and the third largest in Texas with a population of 1,281,047.



LOCATION: Dallas is located in the Central Time Zone in North Central Texas, 35 miles east of Fort Worth, 245 miles north, northwest of Houston and 300 miles north of the Gulf of Mexico.



CLIMATE: Spring (Mar–May) and fall (Sep–Oct) are warm. Summer (Jun–Aug) is hot. Winter (Nov–Feb) is cool to cold.

Average annual snow days: 1.3

Average rain days: 81 days



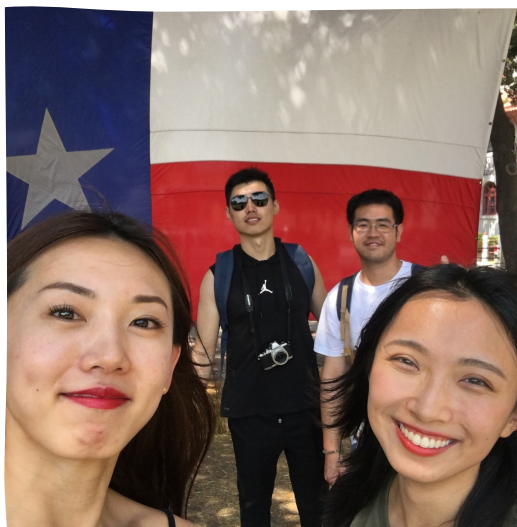
BUSINESS CLIMATE: The Dallas area is home to 21 Fortune 500 companies including Exxon Mobil, JC Penney, AT&T, Texas Instruments, and others.



SPORTS & RECREATION: Dallas is home to five professional sports teams: The Dallas Cowboys (NFL); Dallas Stars (NHL); Dallas Mavericks (NBA); Dallas Wings (WNBA); FC Dallas (MLS) and the Texas Rangers (MLB) plus NASCAR and Indy racing.

DID YOU KNOW?

- The 52 foot 'Big Tex' statue that greets visitors at the annual State Fair of Texas is the tallest cowboy in Texas.
- With the roof enclosed, the entire Statue of Liberty could fit into the Cowboys Stadium.
- The first convenience store, 7-eleven, got its start in Dallas and the corporation is headquartered there today.



Q&A with International Mustangs



Guatham T.
India
Datacenter Systems
Engineering



Ousmane T.
Senegal
Economics and Statistical
Science

What do you do on weekends in Dallas?

I enjoy going on hikes with friends. I love the white rock lake trail, cedar springs trail etc. There are also a lot of Indian restaurants around Dallas and we explore those as well!

During weekends, I play soccer with a group of friends or mostly play video games. I also occasionally hang out at Deep Ellum at night.

What helped you make friends at SMU?

People are generally nice at SMU. They respond to conversation positively, so all I had to do was just walk up to the person I wanted to talk to and start a conversation. I found that sports and food are two easy icebreakers.

At SMU, what helped me make friends was to join organizations such as the International Leadership Program and the African Student Association, where I got to meet some wonderful people. Going to the Fondren Library and forming study groups has also helped me meet people from different backgrounds.

What's your favorite restaurant in the area?

My favorite restaurant in Dallas is an authentic South Indian restaurant called Madurai Thattu Kadai and traditional south Indian foods involving biryani, fish curries, dosas, and idlis are really good here.

My favorite restaurant I'd recommend is Velvet Taco, which is not far from campus and they serve Mexican food. They literally have the best tacos in town.

What helped if you felt homesick?

I felt homesick a lot when I initially came here. Going to Indian restaurants helped through that initially. But I learnt to cook well the major food dishes back home and everytime I feel homesick cooking food that reminds me of home, helped me get through it. And always be in contact with your parents/friends back home. Regular Facetime calls to them kept me in a good mood throughout my stay here in Dallas.

I video call my friends and parents or try to go meet some other Senegalese people. A piece of advice is don't stay in your corner, get out of your comfort zone, and meet new people. Also, take advantage of the lots of resources and opportunities at SMU.

#YouAreWelcomeHere



Get Involved!

Getting involved on campus is a great way to get connected to the SMU community! There are **over 200 student organizations** at SMU including academic, athletic, cultural, and interest groups! Some of these organizations include...

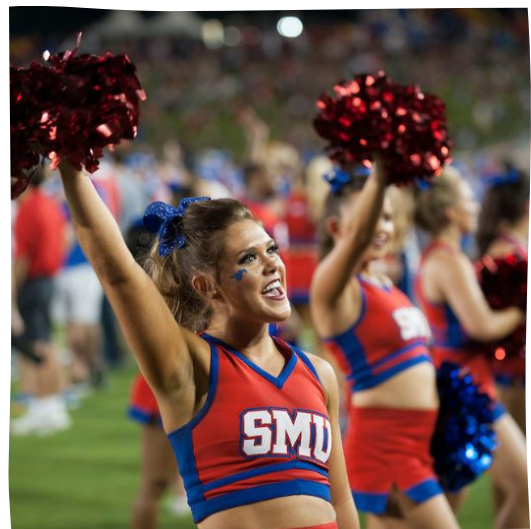
- International Leadership Program
- K-pop Club
- Intramurals Sport Clubs
- Indian Student Association
- Virtual Reality Club
- Asian Council
- Esports Club
- Outdoor Adventures

Discover all the organizations at SMU at Connect.SMU.edu



Check out the SMU International Student & Scholar Services Channel for our #YouAreWelcomeHere video.

Our favorite **SMU Traditions**



"We don't tailgate, we boulevard" is one of the most common phrases that comes up when talking about SMU tradition. A day or two before each football game, beautiful white tents are put up all along the Boulevard and the lawn in front of Dallas Hall. Then, three hours before the game, SMU students, faculty, alumni and friends come out to enjoy food and games on the Boulevard.

At the beginning of each school year there are many events to enjoy and make new friends. Usually there is also a chance to get free food too! The New Student Welcome Party hosted by ISSS has always been a good one!

Homecoming is always a big tradition at SMU. There is banner making, window painting, Peruna painting and float building. Then there is also the much-anticipated Homecoming court in which each organization nominates a candidate for homecoming queen and king. The week builds up to the Homecoming parade to showcase the floats students have worked on.

The Celebration of Lights! Every year in December thousands of lights are displayed on Dallas Hall and it's surrounding area. SMU students come out to sing, listen to groups perform and hear President Turner read The Christmas Story. The finale of the night is always the lighting of the Christmas tree, Dallas Hall and the surrounding trees with more than 100,000 twinkling lights that helps everyone feel the holiday spirit.

WELCOME NEW STUDENTS!

Here's what to expect from now until your arrival in Dallas, Texas.

1 Pre-Arrival

Pay close attention to your SMU email address inbox. The ISSS office and other campus offices will be reaching out to you with important information and pre-arrival resources.

2 Immigration Compliance Course & Government Document Check-In

All **F-1 or J-1 visa holders** are required to complete the ISSS Compliance Course through Canvas. Then, you must register online for a time to attend a **mandatory government document check-in** with the ISSS office when you arrive in Dallas.

3 Campus Welcome

We are looking forward to welcoming you to the SMU community. ISSS will host opportunities for you to develop new friendships, become familiar with U.S./Texas culture and help prepare for the next stage of your professional life.

You are **welcome** here.

For details visit the [ISSS website](#) and review "New Student Information"

STEPS TO RECEIVE YOUR SMU I-20

In order to receive your SMU I-20 please follow the steps below. Contact your admitting department directly for instructions on how to submit the required documents.

STEP 1: Have a photocopy of valid passport ready

STEP 2: Prepare financial documents

- Funds available must meet or exceed cost for 1 year of student expenses
- Dated no more than 6 months prior to submission
- Printed on bank or financial institution letterhead
- Must be printed in English
- Includes account holder name and account information
- Notarized Affidavit of Support - this will only apply if the expenses will be paid by a U.S. sponsor
- Funds must be liquid without restrictions

Student Loans

Student loan applications are not accepted. Approved loans with a dollar amount will be accepted.

Financial Documentation not accepted:

Stocks or Bonds, Life Insurance, Property or Land, Proof of Employment or Tax Documents

For more information about the estimated tuition, fees and other expenses for your program please visit the [Estimated Expenses for I-20](#) page on the International Student and Scholar Services website.

STEP 3: If requesting an F-2 Dependent Visa

The F-2 dependent visa is a nonimmigrant visa which allows dependent spouses and children (unmarried, under 21 years old) of F-1 student visa holders to enter into the U.S. The following is required if your dependents will apply for an F2 visa and travel to the U.S. with you:

- Photocopy of Valid Passport for all dependents
- Photocopy of Marriage Certificate (translated in English) for dependent spouse
- Copy of Birth Certificate f (translated in English) for dependent children
- F1 must provide additional funds for each dependent

STEP 4: Check your SMU Email Address regularly for your electronic I-20

- Please monitor your SMU email account for your electronic I-20 after you've submitted all the required documents for your I-20.
- Once you receive your electronic I-20, please print and sign/date the I-20 in ink for your visa appointment

PRE-ARRIVAL CHECKLIST

For New F-1 International Students

You've received your I-20, next steps:

- ☐ **Understand, review, and verify the information on your I-20 form is accurate.** If you notice any errors, please contact the ISSS office at iss@smu.edu immediately.

[Visit the ISSS website for a helpful "Understanding your I-20 form" video](#)

- ☐ **Pay the SEVIS I-901 fee.** Visit fmjfee.com to pay for this fee. Be sure to print a copy of the SEVIS fee payment receipt.
- ☐ **Apply for F-1 Visa.** Prepare for your visa interview, take the following documents with you:
 - SEVIS Fee Receipt
 - Letter of Admission
 - Form I20
 - Passport
 - Proof of funding and/or educational sponsorship documents reflected on I-20



Tip: Review [helpful videos](#) on the ISSS website about paying the SEVIS I-90 fee, Applying for a visa, and more!

- ☐ **Obtain certified copies of your immigration documents.** It is highly recommended that you have these documents with you when you arrive in the U.S.
- ☐ **Check your SMU email regularly** for updates related to class registration, orientation, and notices from campus departments.
- ☐ **Register for health insurance & complete immunizations to ensure there are no holds on your account.** All international students are required to maintain health insurance through the SMU Health Center. You can register through my.SMU.edu. For more information visit the SMU Health Center website.
- ☐ **Secure Housing.** If you will live on-campus (**undergraduates only**), secure your on-campus housing and meal plan with the Residential Life and Student Housing office. When you schedule your move-in, please note that as an international student, you will have access to an early move-in slot. Visit <https://www.smu.edu/StudentAffairs/ResidenceLifeandStudentHousing>
Graduate students, please visit <https://www.veryapt.com/portal/9/smu-graduate-school/> to learn more about housing opportunities.
- ☐ **Pay tuition and fees:** For more information visit the SMU Bursars Office website at <https://www.smu.edu/enrollmentservices/bursar>

A guide from students, for students

How to Pack for SMU

Packing for a long trip can be stressful and that's okay. We're here to help.



Top 4 Packing Tips

1. Bring Just the Essentials

A lot of items can be purchased locally upon arrival and saves room in your suitcase.

2. Plan Ahead

Get to know what the weather is like in Dallas to plan your clothes accordingly.

3. Bring a Few Sentimentals

Have a few pictures or small mementos that remind you of home.

4. Don't Forget Anything

Make a packing list and check it twice. Include what you plan to buy here in the states!

Must-have items:



Wallet & Money



Passport



Printed Compliance Course



Important Documents



Medical & Immunization Records



Emergency Contact

Clothing and Accessories



Clothes



Glasses



Shoes



Under Clothes

Recommended

Small Towels



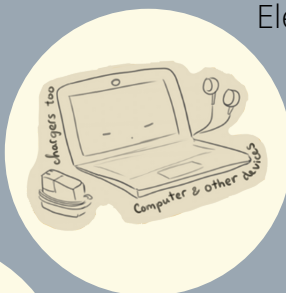
Medicine



Hygiene Products



Electronics & Chargers



Snacks



Universal Adapter



Protective Lotions



DID YOU KNOW?

The International Student and Scholar Services coordinates transportation and a shopping trip at the beginning of the school year to help you get the items you need upon arrival. Check out the ISSS website under "Events" for more information closer to the start of the school year.



Check out the [SMU International Student & Scholar Services Channel](#) for our packing video.

POST-ARRIVAL CHECKLIST

For New F-1 International Students

You've arrived in Dallas, next steps:

- ☐ **Scan all of the following immigration documents:**
 - I-20
 - F-1
 - Passport
 - I-94 Arrival Record
 - Copies of all immigration documents of F-2 dependents, if applicable.
- ☐ **Register to attend a required Government Check-in Session** and ensure you have all the required documents.

[Visit the ISSS website for more information about registering and required documents.](#)

- ☐ **Attend a Government Check-In session at your scheduled time:** Prior to attending, review the required documents on the ISSS website and bring scanned versions along with a device (laptop) to submit the documents.
- ☐ **Attend International Orientation:** Join us for international orientation to learn more about life in the U.S. and at SMU and important information about maintaining your status at SMU. Visit the ISSS website for the most up-to-date orientation schedule.



Please note: Keep up with your emails and individual department/school orientation and activities that you may be required to attend.



International Student & Scholar Services Office

No matter where you are across the globe, the International Student and Scholar Services (ISSS) team is here to support you. ISSS provides services to help you maintain your immigration status and promote your success here at SMU. Stay up to date via our website www.smu.edu/enrollmentservices/international.

Laura Lee Blanton Building, Suite 338

6185 Airline Rd, Dallas, TX 75205

214-768-4475

iss@smu.edu

ISSS Document Pick-Up Hours:

Monday - Friday:

9:00 AM - 4:00 PM

ISSS Advising Hours:

Monday to Thursday:

9:00 AM - 11:00 AM & 2:00 - 4:00 PM

Meet with an advisor on Zoom or in-person!

Follow us:



@smuinternational



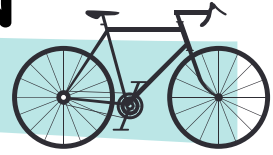
@smuintlservices



SMU International Student and Scholar Services



TRANSPORTATION IN THE U.S.



Concerned about how you are going to get around when you come to Dallas? Don't worry- there are a lot of options!

On-Campus

Walk

Most students walk to class. Just make sure you leave with enough time to make it to class! Google Maps works great in the area and on campus.

Bikes

When going to a university, lots of students may bring a bicycle for transportation around campus. SMU provides various areas to keep your bikes, just bring your lock.

Look into purchasing a bike at popular stores such as Walmart, Target, Dick's Sporting Goods, or Academy Outdoors!

Tapride

If you find yourself feeling uncomfortable walking alone after a long night in the library, call a safe ride using the app *Tapride*. An SMU security officer will pick you up in a golf cart and take you wherever you need on campus.



Pro Tip: It's a good idea to consider how far away your classes are from each other when selecting them, especially since most classes are 10 minutes apart

Off-Campus

Ride Share Services

The most popular option for transportation around Dallas are ride sharing services such as Uber and Lyft. Just download the apps and input your destination! Always make sure the license plate matches.

DART

The *Dallas Area Rapid Transit* service is a railway that travels around the Dallas area including to the airport and NorthPark Mall. Conveniently, across the street from SMU campus is a DART station! SMU students are eligible for a free SMU DART transit pass by enrolling through the Parking and ID Card Services Office with a valid U.S. phone number. DART is typically much cheaper than ride sharing options.



Pro Tip: While the DART is typically safe, it would be smart to travel with a friend and avoid riding the DART late at night.

SMU Express

The SMU Express is a DART operated bus that goes on campus and makes stops at nearby apartments, shopping centers and restaurants.

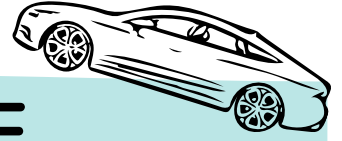
For more information visit [the SMU Parking and ID Services Office website](#).



Transportation from the airport upon arrival in the U.S.

Most students use ride-sharing options such as Uber or Lyft for their commute from the airport to campus, but others may use DART as it is a more affordable option.

STATE ID AND DRIVERS LICENSE



Want to get your state ID or drivers license?

Texas State ID Applications:

For the I.D. Card, you will need to complete an application form; show your passport, visa stamp, I-94 card, and immigration status documents; and pay an application fee. You must have been a resident of Texas for at least 30 days in order to apply for a Texas ID Card or Driver's License. You will have to prove your Texas residency by showing 2 original documents from the DPS's list of approved materials.

Texas Drivers License Applications:

For the driver's license, you will need all the required materials for the State ID and in addition, you will need:

(1) Impact Texas Driver (ITD) course

(2) A six-hour adult Driver Education course, if you are 18 through 24 years of age. If you are above the age of 24 and do not take this course, you will be asked to take a 30-question test at your DPS appointment. We recommend that you study signage and driving laws prior to your appointment.

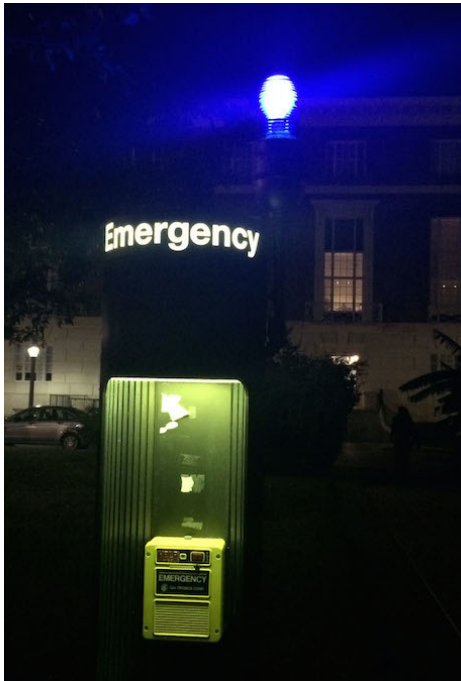


Need some more assistance?

The ISSS office is happy to review your documents prior to visiting the DPS. In addition, the ISSS office hosts trips to the DPS. Keep an eye out for these opportunities in your SMU email.

For more information visit the Texas DPS website at
dps.texas.gov/section/driver-license

U.S. LAWS & SAFETY



Emergency Blue Lights

There are over 55 emergency Blue Light phones across SMU's Campus, typically placed outside or in parking garages. If you are in danger, find the nearest blue light phone, press the emergency button, and you will be connected with the police department and an officer will be dispatched.

Drinking and Driving

In the U.S. it is not permitted to operate a vehicle under the influence of alcohol. If you do, you will jeopardize your student visa status.

Legal Ages in the U.S.

Drinking Age: 21+

Tobacco Age: 21+

Smoking on Campus

Smoking is prohibited within twenty-five (25) feet of any entrance to buildings on campus.

Alcohol on Campus

Alcohol is not permitted in any public area on SMU's campus including the residence halls regardless of your age.

SMU Alerts

In the case of a campus wide safety threat, SMU will send out alerts through the Emergency Notification System (ENS) to alert everyone on campus that there is a threat. Alerts will also be posted on all official SMU social media sites, emailed, and in buildings alarms will sound.

Seatbelts

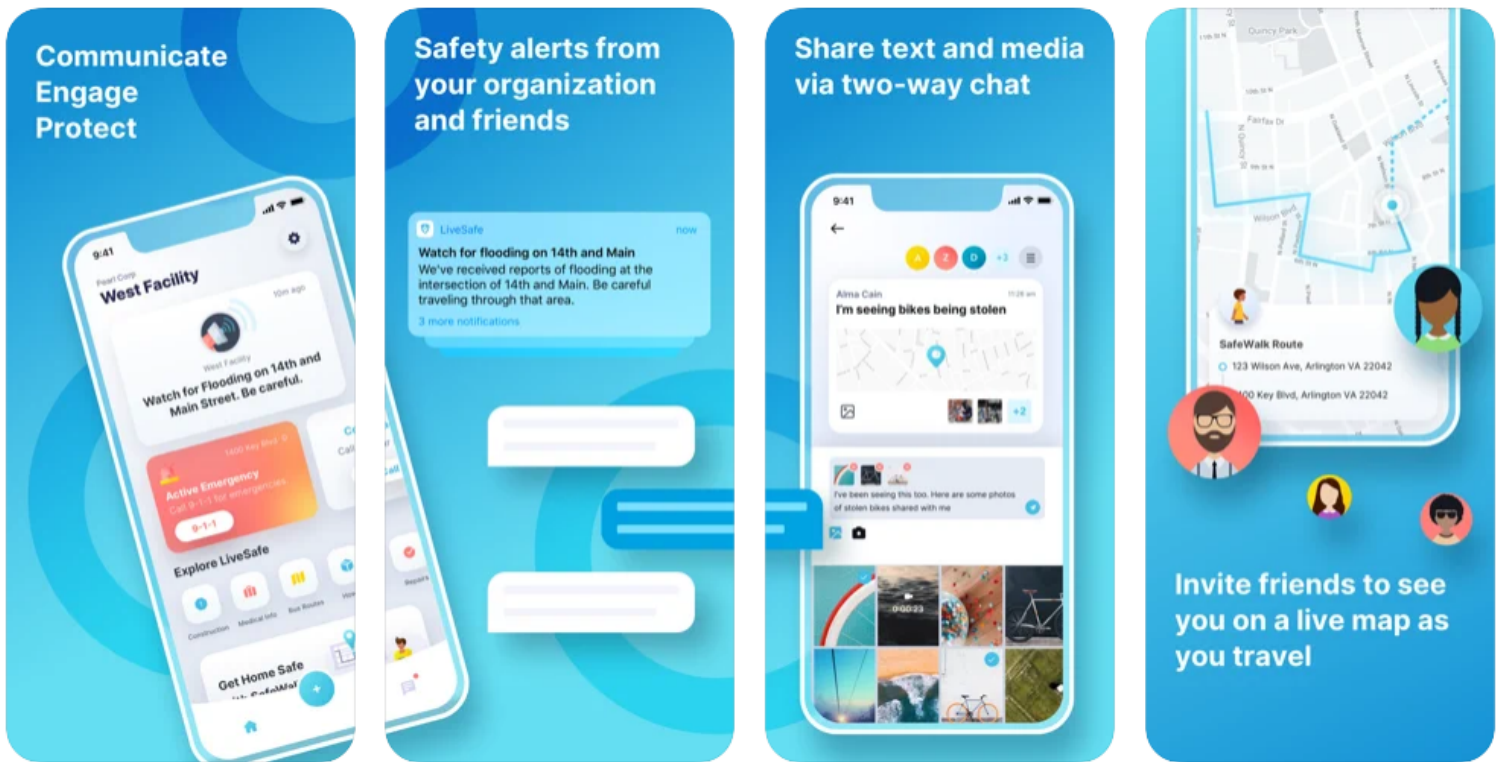
In the U.S. it is **required** to wear a seatbelt in a vehicle, regardless of whether you are driving or not.



EMERGENCY RESOURCES

LiveSafe App

SMU LiveSafe is free mobile app available through the App Store or Google Play. The University and Student Senate partnered with LiveSafe to provide members of the SMU community access to an easy-to-use mobile app that links users to campus safety resources.



Preparing for an Active Threat on campus

Visit smu.edu/aware/active-threat to learn more about how SMU is keeping students safe and how you can be prepared for an active threat on campus.

EMERGENCIES AT SMU: KNOW WHAT TO DO

In the case of an on-campus emergency, alarms will sound across campus buildings with audio instructions on what to do. Students will also get an emergency alert to their emails and phones with updates on the situation.

Emergency Guidelines

Lockdown

When

You will receive this notice if there is an active shooter or other violence on campus

Actions

Depending on the situation: run away, or hide where you are, under furniture; lock or barricade doors; turn out lights; remain quiet. As a last resort fight to defend yourself.

Call 911 if you have information for the police.

Warn others if possible.

Wait for official notice to resume normal activities.



Evacuate

When

You will receive this notice if there is danger inside or near the building.

Actions

Leave the building - do not use elevators.

Assist the disabled.

Take your cell phone, keys, and valuables with you.

Proceed to assembly area outside.

Wait for official notice before attempting to re-enter the building.



Seek Shelter

When

Outdoor sirens signal severe weather or an environmental danger outside

Actions

Seek shelter inside a building and remain there.

Go to the lowest level of the building, stay in interior hallways, away from glass doors and windows.

Monitor TV or website news, if possible.

Wait for official notice to resume normal activities.





HEALTH AND WELLNESS

Dr. Bob Smith Health Center

The health center is an on campus clinic that provides students with access to medical, counseling, and dental services.

Also, the health center has a pharmacy and offers student health insurance.

Learn more at smu.edu/studentaffairs

Office of the Chaplain & Religious Life

“Inspiring the Expression of Religious Faith and Discourse in the University”

The Office of the Chaplain works to ensure that SMU is a place that welcomes religious diversity while offering student support.

Learn more at smu.edu/studentaffairs

Dedman Center for Lifetime Sports

The recreation center offers a free-weight and cardio gym as well as basketball, volleyball, and tennis courts. You will also find indoor and outdoor pools and countless fitness classes including spin and yoga!



Check out the SMU International Student & Scholar Service Channel for [our mental health video](#).

Local Religious Centers

Christian:

- Highland Park United Methodist Church
3300 Mockingbird Ln, Dallas, TX 75205
- Christ the King Catholic Church
8017 Preston Rd, Dallas, TX 75225
- Saint Christopher's Episcopal Church
7900 Lovers Ln, Dallas, TX 75225

Muslim:

- Masjid al-Islam - Dallas, TX
(214) 421-3839
2604 S Harwood St, Dallas, TX 75215
- Islamic Center of South Dallas
2806 Martin Luther King Jr Blvd, Dallas, TX 75215
- Al Razzaq Islamic Centre
(972) 603-8949
11132 Shady Trail, Dallas, TX 75229

Jewish:

- Temple Emanu-El
8500 Hillcrest Rd, Dallas, TX 75225
- Congregation Shearith Israel
9401 Douglas Ave, Dallas, TX 75225
- Temple Shalom
6930 Alpha Rd, Dallas, TX 75240

Hindu:

- International Society for Krishna Consciousness - ISKCON Dallas
(214) 827-6330
5430 Gurley Ave, Dallas, TX 75223
- North Texas Hindu Mandir
(214) 755-3931
10309 Baronne Cir, Dallas, TX 75218
- Sri Guruvayurappan Temple Dallas
(972) 646-1463
1701 Spring Valley Rd, Carrollton, TX 75006

Sikh:

- Gurdwara Singh Sabha
1201 Abrams Rd, Richardson, TX 75081
- Sikh Temple of North Texas
506 Gatewood Rd, Garland, TX 75043
- Gurdwara Nishkam Seva – Irving
834 N Nursery Rd, Irving, TX 75061

Buddhist:

- Buddhist Center of Dallas
(214) 340-9355
8340 Floyd Lake Dr, Dallas, TX 75243
- Bohyun Buddha Temple & Zen Center
(972) 238-8005
1130 Abrams Rd, Richardson, TX 75081
- WAT Dallas Fort Worth-Texas
(972) 554-0405
2144 Rosebud Dr, Irving, TX 75060



Did you know?

SMU's Office of the Chaplain and Religious Life offers religious and spiritual programming and services for all students, staff, faculty, and administration at SMU.

ACHIEVING ACADEMIC SUCCESS AT SMU

Altshuler Learning Enhancement Center (A-LEC)

The ALEC offers *free* peer tutoring, writing center, academic counselors, and academic success workshops to undergraduates.

smu.edu/alec

Disability Accommodation and Success Strategies (DASS)

The DASS office advocates, assists, and accommodates students with physical or learning disabilities. DASS also provides mentoring, self-advocacy, time management, and other success strategies to aide in the academic success of students with disabilities.

smu.edu/provost/sasp/DASS

ESL (English Second Language)

The Department of Intensive English Program partners with the ISSS Office regarding free classes for students who are having academic difficulties due to the English language.

smu.edu/Dedman/Resources/Students/ESL

Fondren Library

Online Databases

Fondren offers an extensive online library database to aide students in their research.

Study Spaces

Need a quiet place to study? Reserve a private study room in the library or go to the Centennial Reading Room, otherwise, Fondren library offers many places for you and your friends to study!

Research Support

Need help navigating research, finding scholarly sources, or creating citations? Fondren library offers support both online and in-person in these areas.

smu.edu/libraries/fondren



Pro Tip: Don't forget to go to your professors office hours with any questions about lectures, due dates, grades, or anything at all. Professors are there to help you so make sure you take advantage!

STUDENT TIPS FOR CLASS REGISTRATION



Sohyun 'Jun',
Alumni Accounting

1

Review All Your Options

University course catalog, major track, ratemyprofessor.com

If you have decided your major, browse through the university course catalog and major track to learn about your required courses. If not, you still have plenty of time to discover your interests and passions by taking advantage of all the diverse classes that SMU has to offer. I personally like to check out the course overview on the university course catalog and instructors reviews on the ratemyprofessor website.

2

Make Your Own Schedule

"Wunderlist", "Class Timetable", "Coursicle"

As an undergraduate I usually enroll in 4 to 6 classes and try to evenly spread them out over the week. Remember that as international students we are required to enroll full-time every fall and spring semester. If possible, try to have a day off from a school to dedicate for your work, internship, exam prep and more. You can utilize apps like Wunderlist and Class Timetable that will help you visualize your college schedule.

3

Talk To Your Academic Advisor

This will vary depending on your academic level and department

New undergraduate students will be able to schedule an appointment with an academic advisor from the University Advising Center (UAC) for assistance with class selection and registration. New graduate students have a difference process based on the academic department. Something I found helpful when deciding between classes was to contact the instructor of the class to ask if you can be added or just simply for class information. You can always find instructors contact information on the SMU faculty website.

4

Be Strategic Selecting Classes

Excel templates for college courses

Create an excel file to keep track of a list of courses you need to take at SMU per semester at a glance. While still making sure to keep a balanced life, I worked on getting the core classes out of the way as soon as possible. Note: undergraduates there are classes that meet 2-4 core requirements - keep an eye out for these, they are a timesaver!

5

Complete all Requirements Needed to Complete Class Registration

Set a reminder for the time/date you can register for classes

Make sure to put classes in the cart to make the registration process smooth and fast. Remember that before you can register, you will need to complete the Immigration Compliance Course on SMU Canvas. Then upon arrival at SMU, attend the Mandatory Government Document Check-in to remain in good visa status. Register in advance for the document-check-in on the ISSS website.



JOB PREP AND EMPLOYMENT *at SMU*

Job Preparation

- SMU's **Hegi Career Development Center** offers career fairs and other career resources including resume building, cover letter writing, job research tips, interview tips, career counseling, and even professional headshots!

Learn more at smu.edu/StudentAffairs

- **Handshake** is an employment search engine that connects students to potential off-campus employers and on-campus job opportunities.

Learn more at smu.joinhandshake.com/



On-Campus Employment

- International students may get an on-campus job
 - **Note:** F-1 and J-1 visa holders are not eligible for federal work study positions.
- Students who obtain employment are **REQUIRED** to visit the ISSS Office and get permission **BEFORE** you begin your on-campus job.

Off-Campus Employment

- Students who have maintained their status for one academic year are eligible to apply for Curricular Practical Training (CPT) or Optional Practical Training (OPT) which allows them to work off-campus.

Learn more at smu.edu/EnrollmentServices/international



Pro Tip: Meet with a Hegi Career Center advisor to create a U.S. style resume and form a strong career plan!

SSN, ITIN, AND TAXES!

A brief overview

Social Security Numbers (SSN)

A Social Security Number (SSN) is a U.S. government-issued identification number that is required for all individuals who are employed in the United States. International students and scholars must have a job offer in order to apply for a Social Security number. Please be advised that any type of employment must be approved by the International Office before a foreign passport holder on a student visa may begin working.



Did you know? The ISSS plans trips to the Social Security Administration (SSA) every semester to assist students in their application. Keep an eye out for emails from ISSS with more information

Individual Taxpayer Identification Number (ITIN)

An ITIN, or Individual Taxpayer Identification Number, is a tax processing number only available for certain nonresident and resident aliens, their spouses, and dependents who cannot get a Social Security Number (SSN). It is a 9-digit number, beginning with the number "9", formatted like an SSN (NNN-NN-NNNN).

Tax Filing

Yes! Every international student and their dependents (including spouses and children of all ages) are required to file their tax return if they were in the US during the previous calendar year. Note: SSN or ITIN is required to file!

Please look out for an email from ISSS in late February/early March for information on how to file for taxes by using Sprintax Software. If you are leaving the U.S. prior to the tax filing deadline, you are still required to file tax forms. You might file for your tax forms electronically.

Learn more at:
smu.edu/EnrollmentServices/international/USLiving

On-Campus Dining Facilities

The Market in Hughes-Trigg Student Center

Mon - Thu 9:00AM - 8:00PM
 Fri 9:00AM - 4:00PM
 Sat 9:00AM - 4:00PM
 Sun 2:00PM - 6:00PM

Arnold Dining Hall

| | | |
|---|---|---|
| Breakfast Mon - Fri 7:00AM - 10:30AM | Brunch Sat - Sun 9:30AM - 2:00PM | Lunch Mon - Sun 11:00AM - 2:00PM |
| Dinner Mon - Thu. 5:00PM - 9:00PM | Dinner Fri. and Sat. 5:00PM - 7:00PM | Dinner Sunday 5:00PM - 8:00PM |

Umphrey Lee Dining Hall

| | | |
|---|---|---|
| Breakfast Mon - Fri 7:00AM - 10:30AM Sat - Sun 9:30AM - 2:00PM | Lunch Mon - Fri 11:00AM - 2:00PM | Dinner Mon - Fri, Sun 5:00PM - 8:00PM Saturday 5:00PM - 7:00PM |
|---|---|---|

Other On-Campus Dining Options

Starbucks - Fondren Library
Lawyer's Inn - Law School Quad
Chick-Fil-A - Hughes-Trigg Student Center
Panera - Hughes-Trigg Student Center
Sushic - Hughes-Trigg Student Center
Shake Smart - Dedman Recreation Center



Eating *Vegetarian* at SMU

In Dallas

Being vegetarian can feel daunting in situations when it seems hard to find options to fill one's appetite. However, the proximity of SMU to downtown Dallas provides students with a greater variety of choices.

Every corner gives rise to a new discovery of small restaurants with unique styles and food. Right across the North East dorms there is the *Sinder Plaza* which is a common place for students to hangout while studying or to visit restaurants or ice cream shops.

If one wants to go further off campus, there is an abundance of opportunities to explore new and wonderful flavors on the weekends by planning an adventure with your friends to downtown Dallas using the DART (Dallas Transit) which is free for all SMU students

At SMU: Dining Halls

Umphrey Lee

The brownies at the Vegan Dessert Section at Umph are delicacies and if you are an SMU student the Umph cookies have a fame of their own. If you consume dairy products and have a sweet tooth, the Umph Dessert Section is a blessing.

Another captivating feature is the make-your-own sandwich and salad area at Umph, it provides you with the flexibility to choose your own ingredients to make your own veggie salad or sandwich.

Arnold

Arnold, has their own make-your-taco section which again, could be made vegetarian with only a red bean paste filling.

Arnold also has a Mongolian grill station where students can make their own grill with rice or noodles hence, vegetarians have the ability to personalize their food.

Other Options on Campus

Something notable about **Mac's place** is that it offers *Beyond Meat* style burgers for us vegetarian lovers. Another favorite are the salads here! Though they are made available in the menu with meat it could be replaced while you are placing your order.

A vegetarian or vegan is in for a treat at the **Food Market!** There is a whole section dedicated to vegan versions of food. It ranges from vegan ice creams to vegan oven cooked food and biscuits. It is my haven.

We also have restaurants on campus which are Chick-fil-a, Lawyer's Inn and Cinco Taco. While at Chick-fil-a there are not many vegetarian options, it is a go-to for french fries. The potato tots at Lawyer's Inn are my vegetarian choice and the vegetarian tacos are *amazing* at the Cinco Taco.

Tips from Upperclassmen

Tread with Caution! It might be hard to differentiate between the meat option and vegetarian options sometimes, so when in doubt check with the staff and double check yourself!

Double Check! Check before consuming boiled or cooked vegetables since sometimes in the cooking process butter is added.

Take Advantage! If you're at the SMU dining halls, there are a variety of fruit options available to take and it is a healthy snack between meals and classes to keep around. So grab a fruit on your way out!



**Dedeepya 'Deepu'
Chinnam**

Undergraduate: Business,
Economics, and Statistics

Ethnic Grocers and Restaurants

African

Maru Grocers

8353 Park Ln Dallas, TX
75231

Quick Shop

17509 Coit Rd Ste 6 Dallas,
TX 75252

Desta Ethiopian

12101 Greenville Ave Ste
105 Dallas, TX 75243

European

Cafe Madrid

4501 Travis St Dallas, TX
75205

Bavarian Grill

221 W Parker Rd Ste 527
Plano, TX 75023

Wooden Spoon

Scandinavian Shop

1617 K Ave Plano, TX 75074

Latin

El Rio Grande Latin Market

5308 Maple Ave Dallas, TX
75235

Fiesta Mart

5334 Ross Ave Dallas, TX
75206

Latin Deli

5844 Abrams Rd, Dallas TX
75214

Asian

Hong Kong Market

9780 Walnut St Dallas, TX
75243

Thai Oriental Food Store

5615 Sears St Dallas, TX
75206

Royal Thai

5500 Greenville Ave Ste 608
Dallas, TX 75206

Patel Brothers

8150 Walton Blvd Irving, TX
75063

India Bazaar

1425 E Belt Line Rd,
Richardson, TX 750813

Curry Up Now

5665 E Mockingbird Ln,
Dallas, TX 75206

Middle Eastern

Cafe Istanbul

7300 Lone Star Dr Ste 160
C Plano, TX 75024

Ali Baba Mediterranean Grill

2103 N Central Expy
Richardson, TX 75080

Food From Galilee

6710 Snider Plz Dallas, TX
75205

Salam Supermarket (Halal)

9780 Lyndon B. Johnson Fwy,
Dallas TX 75243



For more information
and reviews of Dallas
Restaurants,
please visit: Yelp,
Zomato, or Guide Live



Local **Grocery Stores**

Closest to campus:

Tom Thumb

7000 Snider Plaza

On the Mustang Express Bus Route:

Kroger

Mockingbird and Greenville Ave

Central Market

5750 E. Lovers Land and Greenville

(Wide range of produce, prepared and speciality foods; more expensive)

Tom Thumb

Greenville and Lovers Lane

Must be reached by car:

Fiesta

5334 Ross Avenue

(Highly recommended by students for lower prices, wide range of produce, good fish, and international foods.)

Whole Foods Market

8190 Park Lane (Shops at Park Lane)

(Similar to Central Market; more expensive)

Post Office

SMU has a conveniently located mail center in Hughes-Trigg Student Center where you can send letters and if you live on-campus you can pick-up packages. The on-campus post office also offers international shipping and mailing supplies such as envelopes, stamps, and boxes.

Front Counter Hours

Monday - Friday
8:00 AM - 4:30 PM

Mail Pick Up

Monday - Friday
8:00 AM - 5:30 PM
Saturday
11:00 AM - 2:00 PM

For questions email postoffice@smu.edu or call 214-768-4450

Copy Center

The copy center, located next to the Post Office in Hughes-Trigg student Center, prints posters, yard signs, booklets, resumes, and projects.

Copy Services

Monday - Friday
8:00 AM - 5:00 PM

For questions or job submissions email copycentral@smu.edu or call 214-768-7901

Learn more at the SMU Mail and Copy Center website:
<https://www.smu.edu/BusinessFinance/CampusServices/MailCopyCentral>

Banking in the U.S.

Below is a list of major banks near the SMU campus:

Bank of America

Snider Plaza, 6901 Hillcrest

Dallas, TX 75205

214-987-3658

Monday – Thursday, 9:00am – 4:00pm

Friday, 9:00am – 6:00pm

Saturday, 9:00am – 1:00pm

Sunday, Closed

ATM Open 24 Hours

Chase Bank

6437 Hillcrest Ave.

Dallas, TX 75205

214-360-3170

Monday – Friday, 9:00am – 6:00pm

Saturday, 9:00am – 2:00pm

Sunday, Closed

ATM Open 24 Hours

Park Cities Bank

6829 Hillcrest Ave.

Dallas, TX 75205

214-378-3011

Monday – Friday, 9:00am – 5:00pm

Saturday – Sunday, Closed

Wells Fargo Bank

5809 E. Lovers Lane (inside Tom Thumb)

Dallas, TX 75206

214-692-8193

Monday – Thursday, 10:00am – 7:00pm

Friday, 9:00am – 7:00pm

Saturday, 9:00am – 5:00pm

Sunday, Closed

ATM Open 24 Hours

Bank of America

Park Cities BC

5500 Preston Pkwy

Dallas, TX 75205

214-559-6300

Monday – Thursday, 9:00am – 4:00pm

Friday, 9:00am – 5:00pm

Saturday, 9:00am – 1:00pm

Sunday, Closed

ATM Open 24 Hours

BBVA Compass Bank

6501 Hillcrest Ave.

Dallas, TX 75205

214-346-6141

Monday – Thursday, 9:00am – 5:00pm

Friday, 9:00am – 6:00pm

Saturday, 9:00am – 1:00pm

Sunday, Closed

ATM Open 24 Hours

Wells Fargo Bank

6900 Snider Plaza

Dallas, TX 75205

Monday – Friday, 9:00am – 6:00pm

Saturday, 10:00am – 2:00pm

Sunday, Closed



Phones in the U.S.

Information about some companies that offer local phone service in the DFW area is provided below.

AT&T

Retailer providing wireless plans & a range of phones, devices & accessories.

[\(214\) 272-8852](tel:(214)272-8852)

5618 E Mockingbird Ln, Dallas, TX 75206

Verizon

Retailer providing wireless plans & a range of phones, devices & accessories.

[\(214\) 273-6669](tel:(214)273-6669)

3820 Lemmon Ave, Dallas, TX 75219

T-Mobile

Wireless provider offering cell phones, data plans, Internet devices & accessories.

[\(214\) 361-2759](tel:(214)361-2759)

8180 Park Ln Ste C349, Dallas, TX 75231

Research more options on Google!



HEALTHCARE RESOURCES

SMU Health Center

Dr. Bob Smith Health Center

Medical, Pharmacy, Dental, Counseling, and Testing Services

M-F 8:30 - 5:00 PM

Main line: 214-768-2141

smu.edu/studentaffairs/DrBobSmithHealthCenter

For after hours care, please visit:

Local Emergency Room

For life-threatening injury/illness

Texas Health Presbyterian Hospital of Dallas:

8200 Walnut Hill Ln
(214) 345-6789

Baylor Hospital

3500 Gaston Ave
(214) 820-0111

Baylor Scott and White Hospital- White Rock

9440 Poppy Dr
(214) 324-6100

Local Urgent Care

For minor injury or illness

PrimaCare

6350 E. Mockingbird Ln
(214) 828-0448

Monday-Friday, 8:00am-8:00pm
Saturday - Sunday, 8:00am-5:00pm

Sinai Urgent Care

3414 Milton Ave
(469) 522-3995

*Sinai Urgent Care is located in Snider
Plaza, in walking distance from campus*

*For more information, including information about after hours
care and insurance, please visit
smu.edu/StudentAffairs/DrBobSmithHealthCenter*

Important Contact Information

United States Emergency

Phone Number:

911

Campus Police:

214-768-3333

Campus Police

(Non-Emergency):

214-768-3388

International Student & Scholar Services:

214-768-4475

isss@smu.edu

ISSS Document Pick-Up Hours:

Monday to Friday:

9:00 AM - 4:00 PM

ISSS Virtual Advising Hours:

Monday to Thursday:

9:00 AM - 11:00 AM

& 2:00 PM - 4:00 PM

(See website for most up to date hours)

SMU IT Help Desk:

214-768-4357

help@smu.edu

help.smu.edu

Bob Smith Health Center:

Medical Services:

214-768-2141

Nurse Advice:

214-768-3194

Pharmacy:

214-768-2149

Counseling Services:

214-768-2277

Health Education:

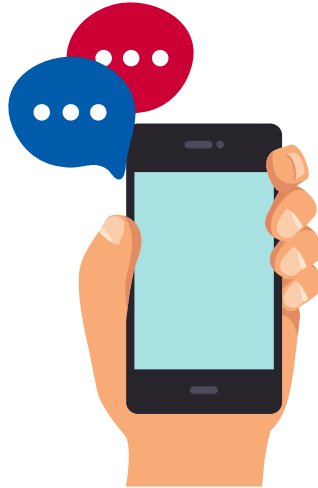
214-768-2393

Violence Prevention and Support Services:

214-768-4512

SMU General Helpline:

214-768-2000



What's the difference between U.S. emergency number and the campus police?



Campus police are *real* police officers that deal specifically with campus safety. They monitor and patrol campus 24 hours a day to ensure SMU is a safe place! Call the campus police when there is an incident on-campus.

Learn more (including how to report an incident) at smu.edu/BusinessFinance/Police

SMU

You Are Welcome Here.