

VISION SMU

Leadership. Philanthropy. Impact.

Spring 2009

Honoring Donors

It has been truly gratifying to see the broad support that The Second Century Campaign has received from SMU's alumni, family and friends throughout the United States.



R. Gerald Turner

While SMU leadership gifts are essential to the success of this campaign, we also want to highlight the importance of annual contributions that support student and faculty achievement in the classroom, library and laboratory.

For that reason, I am very excited to announce two societies honoring annual donors. Those who contribute \$1,000 during a fiscal year will be welcomed into the President's Associates. Those who contribute for two or more years consecutively will be welcomed into the Hilltop Society.

These societies celebrate donors who understand that it takes ongoing gifts of all sizes to support the many areas of excellence that characterize an SMU education.

Annual gifts have an immediate impact on University priorities such as the ability to provide the scholarships that help attract the best students. They also support the University's continuing rise in national prominence. Annual giving rates among alumni are a factor in determining national rankings that help others to appreciate the quality of our programs.

Members of both donor societies will receive special communications and will be acknowledged in SMU publications. They also will receive invitations to special events in Dallas and cities around the country.

I thank all of you for your continuing support and hope that you also will act to become a member of these new donor societies. Your continued participation in The Second Century Campaign will ensure that SMU continues the unprecedented momentum that we have enjoyed, with your support, in recent years.

R. Gerald Turner, President



Partnering for Success

Bobby B. Lyle School of Engineering

Over the past several years, SMU Trustee Bobby B. Lyle '67 has worked closely with Engineering Dean Geoffrey Orsak to develop a bold new model for educating engineers. It prepares them to excel in their field and lead the way in creating new economic opportunities, while also addressing the most difficult challenges facing society.

In recognition of his instrumental role in shaping the school's direction and his generous financial support of its programs, SMU announced the naming of its school of engineering in honor of Lyle during a campus celebration October 17.

"With the naming of the Bobby B. Lyle School of Engineering, we are confirming our commitment to leadership in engineering education and securing the school's bright and promising future," President R. Gerald Turner says.

As part of its new direction, the Lyle School has unveiled initiatives that will arm students with the best technical training and the skills to be

innovators and leaders. They include the SMU/ Lockheed Martin Skunk Works® Program, in which students and faculty will apply creativity to challenging problems; the Center for Engineering Leadership, which will provide a four-year development program for each student; the Caruth Institute for Engineering Education, dedicated to innovative curricula for students from kindergarten through college; and a new institute focused on technologies to benefit developing nations.

"Our programs are designed to move beyond traditional engineering education as we prepare a new generation of engineers to provide leadership in the application of technology to solve real-world problems," Lyle says. "I am extremely excited that we have crafted a strategic plan for the school that has the potential to advance engineering education on a worldwide basis."

An SMU trustee for 20 years, Lyle has excelled in diverse fields as an engineer, corporate executive, entrepreneur and civic leader. From 1967 to 1975, he was a professor and administrator in SMU's business school, where he served as dean *ad interim* and as executive dean. His financial contributions to the engineering and business schools place him among the top donors in the University's history.

The Lyle School is seeking additional support for school priorities such as the new Caruth Hall, student scholarships and faculty research. To learn more, please contact Assistant Vice President for University Development Pam Conlin at 214-768-3738 or pconlin@smu.edu.

Above: President R. Gerald Turner, Bobby B. Lyle '67 and Dean Geoffrey Orsak celebrate the naming of the Bobby B. Lyle School of Engineering.



The Lyle School seeks support to complete construction of the new 65,000-square-foot Caruth Hall, which will house the Caruth Institute for Engineering Education, the Center for Engineering Leadership and the SMU/ Lockheed Martin Skunk Works® Program.

Supporting Teachable Moments

Annette Caldwell Simmons Hall, Home to the School of Education and Human Development

SMU's resources for programs in teaching and learning received a critical boost with a gift of \$20 million from Harold and Annette Caldwell Simmons '57 in 2007, endowing the University's Annette Caldwell Simmons School of Education and Human Development.

Now SMU has broken ground on a new home for the school that will gather many of its wide-ranging endeavors into a single, state-of-the-art facility, Annette Caldwell Simmons Hall. The



During the groundbreaking celebration, students from Dallas' Maple Lawn Elementary School sang to Annette Caldwell Simmons '57, a former teacher, here with President R. Gerald Turner.

Simmons endowment provided the lead gift for the building, and SMU will raise additional funds to meet total project costs.

"It seems like a minute ago that this building was just a drawing," said Mrs. Simmons at the groundbreaking in December. "And in another minute, it will have hundreds of students. What a day that will be."

The school has moved quickly to realize the goals of the Simmons gift, says David Chard, the school's Leon Simmons Endowed Dean. Over the past year, it has doubled the size of its doctoral program in educational research and expanded its Master of Science program in counseling. In September 2008, the school opened the Center for Family Counseling at the SMU-in-Legacy campus in Plano, and it recently added a branch of that center at the Resource Center of Dallas.

Supporting Annette Caldwell Simmons Hall will be a great way to honor teachers, President R. Gerald Turner says.

"One of the ways we will complete funding is to ask people to step forward to name every room



By supporting the construction of Annette Caldwell Simmons Hall, donors can honor the teachers in their lives with named rooms.

in this building in honor of a teacher," he says. To launch this effort, Turner has named the reading room in honor of his wife, Gail, a teacher for 13 years.

To learn about supporting the Annette Caldwell Simmons School of Education and Human Development, please contact Director of Development Patti Addington at 214-768-4844 or paddington@smu.edu.

VISIONSMU

Vol. 3, No. 1 Spring 2009

Vision SMU is published by the Division of Development and External Affairs for supporters and friends of the University. The newsletter showcases the progress made possible by generous donors and the potential for advancement as SMU approaches the Centennial in 2011 of its founding and in 2015 of its opening. Please direct inquiries to Office of Development and External Affairs, SMU Box 750402, Dallas, TX 75275, 214-768-2666 or smu.edu/vision. 09470.209

2008-09 Development and External Affairs Committee

Ruth Collins Sharp Altshuler '48, chair
 Jeanne L. Phillips '76, vice chair
 Elisabeth Martin Armstrong '82, Parent Leadership Council co-chair
 William Armstrong '82, Parent Leadership Council co-chair
 John R. Bauer '66, Planned Giving Council chair
 Bradley W. Brookshire '76
 Kelly Hoglund Compton '79
 G. Mark Cullum '69
 Nancy McMillan Dedman '50
 Dennis A. Foster, faculty representative
 Gregory D. Gardner '91, Mustang Club president
 Milledge A. Hart, III
 Gene C. Jones
 Connie Blass O'Neill '77, alumni representative
 Regan Owen '09, student representative
 Sarah Fullinwider Perot '83
 Jo Ann Geurin Pettus '69, '70
 Richard Ware '68
 Royce E. (Ed) Wilson
 Carl Sewell '66, Board of Trustees chair*
 R. Gerald Turner, president*
 * ex-officio

Division of Development and External Affairs

Brad E. Cheves, vice president

Launching a New Era in Ministry Elizabeth Perkins Prothro Hall

SMU's Perkins School of Theology celebrated the beginning of the 2007-08 academic year by breaking ground for a project to improve its existing facilities and to create new ones.

Now the school is in the midst of a major transformation as construction nears completion on a 20,000-square-foot facility to be named in honor of Elizabeth Perkins Prothro.

The Perkins-Prothro family of Wichita Falls, Texas, whose financial support of the school spans three generations, gave \$6 million to the school in January 2007.

The gift composes about half of the funds required to renovate Kirby and Selecman halls – originally built in 1948 and 1952, respectively – and to construct Elizabeth Perkins Prothro Hall. Naming opportunities are available in the buildings.

Prothro Hall will feature seminar rooms and classrooms, conference rooms and preaching and computer labs. The building will double the school's available space for meetings and community dining, as well as provide facilities for public programs.

"Together with the hall renovations, the



With the new Elizabeth Perkins Prothro Hall and renovations to Kirby and Selecman halls, the Perkins School of Theology will be well-equipped to prepare students for church leadership in the 21st century.

construction of Prothro Hall will make Perkins School of Theology the premier location to prepare women and men for faithful leadership in Christian ministry," says William Lawrence, Perkins School dean. "It is a great investment in the future of the church."

A dedication ceremony is scheduled for September 11, 2009.

To learn about supporting the Perkins School, please contact Todd Rasberry at 214-768-3166 or trasberr@smu.edu.

Building on a Tradition of Leadership

Judge James Noel Dean and Professor of Law

Judge James L. Noel Jr. once told a family member that he wished he could afford to someday endow the dean's chair at his alma mater.

Noel's five children have honored their late father's wish – endowing the deanship of SMU's Dedman School of Law in his name. The \$4 million gift from the Noel family of Houston, combined with \$1 million from the Dallas family of school namesake Robert H. Dedman, Sr., will allow the law school to continue its tradition of strong leadership and provide the office of the dean with ongoing funds for special projects within the school.



John B. Attanasio

“This is a wonderful way to honor Judge Noel and a historic moment for Dedman School of Law,” says John B.

Attanasio, the dean since 1998 who now assumes the title Judge James

Noel Dean and Professor

of Law. “Only a few law schools in the country have endowed deanships, and even fewer are

endowed at the \$5 million level.”

Noel's five children and their spouses, all Houston residents, joined in making the gift to SMU. Four of the five children and three spouses have SMU degrees – all but two from Dedman School of Law: Carol Noel King '76, J. Stephen King '77, Robert C. Noel '80, '89, Deanne Moore

“This is a wonderful example of one of SMU's leading families, the Noels, contributing to the success of future students. This generous endowment ensures the very best leadership at Dedman School of Law.”

– Paul W. Ludden, SMU provost and vice president for academic affairs

Noel '89 and William D. Noel '82. Edmund O. Noel '75 and Patrice Oden Noel '75 received their undergraduate degrees from SMU. James L. Noel III attended law school in Houston, but his daughter, Mindy McGehee Riseden '03, graduated from Dedman School of Law.

Judge Noel earned three degrees from SMU – a Bachelor's in civil engineering in 1931 and a Bachelor's in commerce in 1932, followed by an L.L.B. from SMU's law school in 1938. The Denton County native became an assistant Texas attorney general after graduating. He had estab-

lished his own law firm by the time President Kennedy appointed him to the federal bench in Houston in 1961. Judge Noel served in that position until 1980 and died August 29, 1997.

Noel's children usually meet Mondays for lunch over hamburgers. Will Noel explained that over several weeks, inspired by the Dedman

family's matching gift, the Noel siblings had discussed increasing donations to their father's Dedman Law scholarship fund. Carol Noel King told her brothers that her husband, J. Stephen King, had heard the Judge's rather wistful comment about endowing the deanship.

“We all looked at each other,” he said, “and that was it.”

To learn about supporting Dedman School of Law, please contact Director of Development Lynn Bozalis at 214-768-4527 or lbozalis@smu.edu.

Endowed Faculty at Work

Gifts from alumni, parents and friends have established dozens of endowed faculty positions at SMU, enabling the University to attract leading scholars with significant research funds and competitive salaries. Through The Second Century Campaign, SMU aims to increase to 100 the number of endowed academic positions.



Joaquín Achúcarro
Joel Estes Tate Professor of Piano

Internationally acclaimed pianist Joaquín Achúcarro, described as the “consummate artist” by the *Chicago Sun Times*, has performed in 60 countries and with more than 200 orchestras, including the Berlin Philharmonic, New York Philharmonic and London Symphony. His students at the Meadows School of the Arts also have experienced international success, with many teaching and performing around the world. Knighted by King Juan Carlos of Spain, he has received honors including UNESCO's 2000 “Artist for Peace” and Spain's highest honor, the Great Cross of Civil Merit, for “his lifetime achievement.” He has 26 commercial recordings with RCA, Sony, BMG and Claves.



Peter Raad
Linda Wertheimer Hart Director of the Linda and Mitch Hart eCenter

Peter Raad is director of the Hart eCenter, a cross-disciplinary initiative founded in 2000 that focuses on research, education and innovation in interactive network technologies. Under Raad's leadership, The Guildhall at SMU was established in 2002 at SMU-in-Legacy as a major eCenter program to train and educate digital game developers. In addition to serving as executive director of The Guildhall at SMU, Raad is professor of mechanical engineering in the Bobby B. Lyle School of Engineering. He has received multiple outstanding faculty awards and has published numerous journal articles and conference papers.



Willard Spiegelman
Duwain E. Hughes Jr. Distinguished Professor of English

Willard Spiegelman has a well-tuned ear for the rhythms of language. He writes about and teaches the English Romantic poets and American poetry of the 20th and 21st centuries in

Dedman College of Humanities and Sciences. He is the author of books including the forthcoming *Seven Pleasures: Essays on Ordinary Happiness*, as well as *How to Read and Understand Poetry* (1999). He is a regular contributor to poetry magazines and publications and has been recognized for his achievements as editor of *Southwest Review*, a literary quarterly based at SMU.



Kumar Venkataraman
Marilyn and Leo Corrigan Jr. Professor of Finance

As the economic crisis widens, governments and news media increasingly turn to academia for answers. And with research interests in financial market design, trading and information economics, Kumar Venkataraman, a 2008 Gerald J. Ford Research Fellow in Cox School of Business, is in high demand. His research has influenced policy debates on the structure of the financial markets and has been featured in textbooks and publications including *The Wall Street Journal*. He serves as associate editor of *Financial Management* and is an invited member of the National Bureau of Economic Research Working Group on Market Microstructure.

Broadcasting History Online: Central University Libraries

In 1977, U.S. Senator John Goodwin Tower '53, a member of the Senate Committee on Armed Services, presented his weekly television spot, "Tower News," to Texans.

"I believe more and more people across the country are beginning to recognize that the Soviet Union is engaged in serious, steady and sustained efforts to become the dominant modern military power in the world," Tower said in one broadcast. He represented Texas in the U.S. Senate from 1961 through 1984.



Videos of former Senator John Goodwin Tower '53 (right) can be viewed on Central University Libraries' website. Tower served as a member of the SMU Board of Trustees from 1968–87 and as a distinguished lecturer in political science from 1985 until his death.

A digital video of the recording, along with other Tower speeches, is available to viewers for the first time in more than 30 years on SMU's Central University Libraries' website as the result of a gift from the late senator's youngest daughter, former SMU Trustee Jeanne Tower Cox '78. (View the Libraries' digital collections at digitalcollections.smu.edu.)

The project represents a collaboration between two universities. The speeches had been preserved on film considered too fragile to screen at Tower's undergraduate alma mater, Southwestern University in Georgetown, Texas, home of the John G. Tower Collection. SMU houses the John Goodwin Tower Center for Political Studies, which was established by his family soon after Tower and his daughter Marian were killed in a plane crash in 1991.

Plans call for more materials to be digitized for Central University Libraries. "We have embarked on an ambitious plan to bring hidden treasures into the public domain," says Gillian McCombs, dean and director of Central University Libraries. "We are counting on the support of SMU alumni and friends to help us."

To learn about supporting Central University Libraries, please contact Director of Development Paulette Mulry at 214-768-1741 or pmulry@smu.edu.

Showcasing Mustang Spirit

New Facilities for Swimming, Diving and Golf

SMU Athletics has had many reasons to celebrate in recent seasons, including the opening of Crum Basketball Center and the arrival of head football coach June Jones and men's head basketball coach Matt Doherty. Now, efforts are under way for new facilities for men's and women's swimming and diving and golf.

More space for swimmers and divers

Perkins Natatorium, the home of SMU swimming and diving since 1956, has run out of wall space. National and conference championship trophies are stacked two deep, and the walls are crammed with photographs of men's and women's national and international champions.



A new aquatic center would provide SMU swimmers and divers with the modern facilities they need to practice and compete.

"We need to bring the spirit and tradition of Perkins Natatorium to a new facility with modern amenities and size," says women's swim coach Steve Collins.

A proposed aquatic center planned for the site of the natatorium on Bishop Boulevard could include a 50-meter pool with 22 training lanes, a 10-meter diving platform and underwater video installations for competition and training.

Currently, men's and women's swimming share the six-lane natatorium for three practices each day. Divers practice at the outdoor Barr Pool until cool weather arrives, when they rent a high school facility for practice.

A larger pool would give student-athletes more flexibility to balance practices and academic schedules, Collins says.

The larger facility also would enable the Mustangs to host top-tier competitions. Teams that currently compete at the SMU Classic send just eight swimmers because of the limitations of the six-lane natatorium, says Eddie Sinnott, men's swimming coach.

"Bringing top-level competitions to SMU increases our visibility to recruits and showcases the achievements of our program," he says.

Keeping golfers in the swing

A new \$4 million golf practice facility at the Dallas Athletic Club will put SMU at the forefront of men's and women's collegiate golf, says Jay Loar, men's golf coach. With a practice course, workout facility, locker rooms, study rooms and clubhouse in one location, college athletes can make better use of their time, leading to better golf scores and grade point averages, he says.

Current SMU golfers wake up for 5:30 a.m. workouts at the Salvino Strength and Conditioning Center on campus and practice their swings 10 miles away at the Dallas Athletic Club. "This will give them a permanent home," Loar says.

The facility also will help them prepare for national tournaments, with indoor hitting bays equipped with swing-analysis capabilities and a five-acre practice course.

Golf course designer Chet Williams has designed the four-hole short course, which will enable golfers to practice on bent grass greens popular in cooler climates and grainier Bermuda grass greens common in warm climates. Greens will challenge golfers with tiers and slopes, and bunkers will feature different textures of sand.

"People who study golf understand that it all gets down to the short game," Loar says.

Golfers will use the facility to build on SMU's golf legacy – the men's and women's teams hold national championship trophies. The program has produced golfing greats such as Kyle O'Brien '80 and the late Payne Stewart '79.



A new golf practice facility planned at the Dallas Athletic Club will help make SMU golfers a "perennial golf power," says men's coach Jay Loar.

Part of the facility will be named in Stewart's honor. In addition, the 11th annual Payne Stewart Cup golf tournament May 4 will benefit SMU men's and women's golf.

To learn about supporting SMU Athletics, please contact Senior Associate Director for Development Tim Leonard at 214-768-4465 or tleonard@smu.edu.

Building a Lifetime Network for Success

Hegi Family Career Development Center

Economic uncertainties and a tight job market have been in the headlines for much of the past year. For help in meeting those challenges, SMU students and alumni increasingly are turning to the Hegi Family Career Development Center.

“In this era of globalization, where the only sure thing is rapid change, students and alumni are finding they need a strong network, fluid strategies and resources that keep them competitive for a lifetime,” says Troy Behrens, the center’s executive director. “The center provides all of these tools.”

In 2001, Jan ’66 and Fred Hegi ’66, along with their family, provided the lead gift for a \$3 million endowment and expansion of SMU’s Career Center in the Hughes-Trigg Student Center.

Each year, thousands of students and alumni visit the Hegi Family Career Development Center in person and online for career planning, job and internship searches, résumé and internship workshops and career fairs, among other services.

“The career development process should start with first-year orientation and continue throughout a graduate’s lifetime as we re-pot ourselves during our careers,” says Fred Hegi, who serves on the SMU Board of Trustees and as co-chair of the Dedman College Campaign Steering Committee. “Whether you’re 18 or 78, the center offers significant resources for career transitions and growth.”

Behrens says donor support is critical for the center to increase vital services, including domestic and international internships for students,

most of which are unpaid positions; a Career Advantage Plan, to help students develop career goals beginning their first year; and an expanded alumni network, including a job database and mentoring program.

“Our vision is for the center to provide every student a life-changing experience,” Behrens says. “We also want to provide employers with well-prepared graduates.”

Matt Grosmann ’08 credits the Hegi Center with helping him land an internship as a student and his current analyst position at an investment bank. He has served on the Hegi Center’s Advisory Board as a student and now as a graduate, and says he hopes to build on the center’s successes.

“My goal is for everyone – students in all disciplines and alumni in all fields – to turn to the Hegi Center for direction, just as I have,” he says.

To learn about supporting the Hegi Family Career Development Center, please contact Associate Director of Development Arlene Manthey at 214-768-4711 or amanthey@smu.edu.



Counselors at the Hegi Family Career Development Center offer students and alumni guidance and workshops on interviewing, networking, résumés and more.

BY THE NUMBERS

- The Hegi Family Career Development Center has an average 7,000 career services interactions with students and alumni every year.
- In 2008, the center’s four counselors conducted 1,800 counseling sessions.
- The center’s website averages 335,000 visits each year.

Creating Opportunities for Fun and Friendship

New Late-Night Programs

One recent Friday around midnight, Dedman Center for Lifetime Sports was jumping. On one basketball court, students danced to a live band. On another, they jousted, wrestled and crashed through an inflatable obstacle course. Several students cycled to karaoke, while others raced up the climbing tower.

The students were participating in SMU Gladiators, a new event sponsored by the Department of Recreational Sports and one of several late-night programs launched this year across campus.

“Tonight is a real change of pace,” said Angeline Nguyen, a junior who was trying her hand at a beanbag toss. “This event is bringing people of all different backgrounds together on campus.”

As part of its Task Force on Substance Abuse Prevention, the University this year extended the hours at Dedman Center and Hughes-Trigg

Student Center, where activities and gathering spaces also are being expanded. In addition to the Gladiators event, late-night programs have included midnight movies, a dance marathon and Café Jazz, featuring Meadows School of the Arts Dean José Bowen and his band.

“The goal is to make the campus a center of activity at night and on weekends,” says Lori White, vice president for Student Affairs. “Students need opportunities to unwind and build relationships with faculty, staff and peers.”

A grant fund, overseen by a committee of students, staff and faculty, has been established to help support late-night activities initiated by students that are open and free to the entire campus. Richard Owens, committee chair and Hughes-Trigg director, says, “We want to help fund students’ efforts to organize gatherings that



Students participate in a beanbag toss during SMU Gladiators, one of the new late-night events on campus that offer opportunities to gather and relax.

offer fun without the social pressures.”

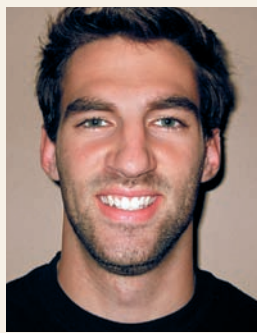
To learn about supporting student programs, please contact Associate Director of Development Arlene Manthey at 214-768-4711 or e-mail amanthey@smu.edu.

World of Possibilities: Irsay Family Scholarship

Scholarships open doors for gifted students whose financial circumstances may be a barrier to education and a promising future. Jim Irsay '81, owner and CEO of the National Football League's Indianapolis Colts and an Indiana native, envisioned opening these doors for Indiana students when he created the Irsay Family Scholarship.

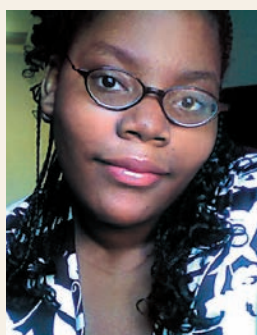
"SMU provided me with a great education and the foundation for success in business and in life, and I wanted to create the same opportunity for promising young people in Indiana," Irsay says.

Nicholas Nikides, a sophomore cinema/television major, became the first Irsay Scholar in fall 2007 and is considering a career in the film industry after graduation. "The Irsay Scholarship doesn't restrict me to any specific course of study," he says. "It has allowed me to choose the major I truly wanted."



Nicholas Nikides

First-year student Janiece Davis, who received her Irsay Scholarship in fall 2008, is studying psychology and hopes to earn a Ph.D. in psychology. "This scholarship is life-



Janiece Davis

changing, and I don't know where I would be without it," Davis says. "It has provided options that I never imagined."

Irsay Scholars receive a four-year full-tuition scholarship at SMU, and room and board support is available for students who choose to live on campus. To be eligible, students must be Indiana residents who graduated from an Indiana high school.

"We thank the Irsay family for this generous commitment to SMU," says Linda Preece, director of endowment and scholarship giving. "The University is grateful for the resources to recruit outstanding students from Mr. Irsay's home state of Indiana."

To learn about creating a scholarship program, please contact Linda Preece at 214-768-4863 or lpreece@smu.edu.

Attracting Top Students

Meadows School of the Arts Scholars

As a top high school senior interested in art history, Rosemary Parravano was accepted at colleges boasting some of the most highly regarded art history programs in the country, among them SMU.

When the time came to choose where she would spend the next four years of her life, Parravano says that what led her to SMU was the offer of a Sewell Meadows Scholarship, supported by Carl Sewell '66, chair of SMU's Board of Trustees, and his wife, Peggy '72.

"When I discovered that not only was I interested in SMU, but that SMU was interested enough in me to offer a Meadows Scholarship, it was perfect, and I knew what my choice would be," says the first-year student, a graduate of Hockaday School in Dallas.

Parravano is one of 11 students who received a Meadows Scholarship in fall 2008, the program's inaugural year. The Meadows program offers scholarships that provide an annual stipend of \$7,500 per student. Scholars each also receive up to \$5,000 during their four years for independent travel and research, funded by the Meadows Foundation Edge for Excellence Grant.

Scholarship offerings such as these are key components of SMU's successful initiative to improve student quality. Thanks to the generous support of numerous donors, the class of 2012 received the highest number of merit scholarships in SMU history. Thirty-eight first-year students received full-tuition President's Scholar awards this fall, boosting the total number of undergraduates in the prestigious program to 102. Hunt Leadership Scholarships were awarded to 26

incoming students, while 103 joined the Edwin L. Cox BBA Scholars Program.

These scholars also have helped drive the increase in SMU students' average SAT scores, which have risen more than 96 points in the past 10 years.

To be eligible for a Meadows Scholarship, students must have earned a combined SAT score of at least 1350 and a minimum high school GPA of 3.5. Most students selected as Meadows Scholars far exceeded the minimum requirements, says José Bowen, Meadows School dean.

"We designed the Meadows Scholars program to help us attract the best students in the country," Bowen says. "Our goal is to make the Meadows School second to none in the quality of our students and the quality of our programs."

Twelve supporters, many of them SMU alumni or parents, signed on to launch the program in its first year. SMU is seeking additional commitments of support for the coming year.

In addition to their financial component, Meadows Scholarships offer students the opportunity to be a part of a community of supportive faculty members, dedicated sponsors and gifted and motivated students.

"It's been amazing meeting other students who are as passionate about their craft as I am about art history," Parravano says. "I don't know of any other program that has put together all of these different elements the way SMU has."

To learn about supporting the Meadows Scholars program, please contact Director of Development Kris Vetter at 214-768-4559 or kvetter@smu.edu.



First-year art history student Rosemary Parravano received a Sewell Meadows Scholarship, supported by Carl Sewell '66, chair of SMU's Board of Trustees, and his wife, Peggy '72.

New Endowments Established at SMU

SMU thanks these generous donors, who contributed to endowments during the quiet phase of The Second Century Campaign between January 1, 2006, and the public launch of the campaign on September 12, 2008. In supporting endowments, they provide permanent resources for SMU's highest priorities.

Grant F. Adamson '88 and Nelda Sánchez Adamson '85, '88
The Nelda Sánchez Adamson Endowed Scholarship Fund

Abbas, Habiba, Omar and Amina Akhil
Osman A. Akhil Memorial Scholarship Endowment Fund at Southern Methodist University

Anonymous Donor and SMU Student Senate
The Mustang Leader Scholarship Endowment Fund

The Pat and Jane Bolin Family Foundation
The Pat and Jane Bolin BBA Scholars Endowment Fund

Tucker Bridwell '73 and Gina L. Bridwell
The Tucker S. and Gina L. Bridwell BBA Scholars Endowment Fund

Marjorie F. Calahan
The Cruse C. and Marjorie F. Calahan Endowed Scholarship Fund

The W.W. Caruth, Jr. Foundation Fund of Communities Foundation of Texas
The W.W. Caruth, Jr. Institute for Engineering Education Endowment Fund

Billy R. Clements '59
The B.W. and Velma Clements Endowment Fund *

The Fulton and Susie Collins Foundation
The Chrissy Collins Endowment for the Temerlin Advertising Institute

The Estate of Marvin Collins
The Marvin Collins Memorial BBA Scholars Endowment Fund *



Edwin L. Cox '42
The Edwin L. Cox BBA Scholars Endowment Fund

Peter D. Crist and Stephanie Crist
The Jordan Crist Memorial Scholarship Endowment Fund

William A. Custard '57 and Linda Pitts Custard '60, '99 and L. Frank Pitts
The Custard and Pitts Family Endowed President's Scholarship Fund

Pat DePole and Rebecca J. DePole '06
The Pat and Rebecca DePole Endowment Fund for the Department of English

Derek E. Dewan and Kim B. Dewan
The Dewan Family BBA Scholarship Endowment Fund

Vivian Noble DuBose '77
The Ed Noble Endowed MBA Scholarship Fund

Alan D. Feld '57 and Anne S. Feld
The Henry R. and Rose S. Feld and Morton H. and Hortense Sanger Endowed Scholarship Fund

George M., Jr. and Mary LeCron Foster Revocable Trust
Robert Van Kemper Endowment Fund for Research in Social and Cultural Anthropology *

Peggy Crooke Fry
The Edward I. Fry Anthropology Endowment Fund

Dean M. Gandy '49, '50
The Judge Dean Gandy Endowed Scholarship Fund

The Estate of Pat Gibbs
Gibbs Memorial Scholarship Fund *

The Estate of John W. Hagey
The John W. Hagey Endowed Scholarship Fund *

William R. Hardy '34 † and Meredith L. Hardy '35 †
The Amy Meredith Grubbs Endowed Memorial Scholarship Fund *

The Estate of Peggy R. Harrison
Peggy R. and Constance Harrison Fund *

Milledge A. Hart, III and Linda Wertheimer Hart '65
R. Gerald Turner Board Room and President's Office Initiatives Endowment Fund

Hillcrest Foundation
The Herscher Family Endowed Fund in Education
The Herscher Family Student Leadership and Education Endowment Fund

Wilma E. Hogg
The W. Richey Hogg Endowment for Studies in World Christianity

Roy M. Huffington '38 †
Huffington Bicentennial Endowment Fund for the Huffington Department of Earth Sciences
Huffington Bicentennial Faculty Endowment Fund
Huffington Bicentennial Scholarship Endowment Fund

John W. Hunt
The Essie Joel Hayden Hunt Kidd-Key Endowed Fund

E.R. Hyde '49 and Mary Ann Hyde
The Edward R. and Mary Ann Hyde Endowed President's Scholarship Fund *

The Estate of Henry H. Johns
The Henry H. Johns Endowed Fund for Foreign Languages *

Barry D. Johnson '86 and Susanna Y. Johnson '82, '85
The Jimmie W. Yarbrough Endowed Internship Fund

Jeanne Roach Johnson '54
The Jeanne R. Johnson Piano Guest Artist Endowment Fund
The Jeanne R. Johnson Meadows Scholars Endowment Fund

Robert M. Lockhart '52 and Mary L. Lockhart
The Lindsay Embrey Engineering Endowed Building Fund *

D. Scott Luttrell '77 and Laura Dvorozniak Luttrell '77
The EnCap Investments & LCM Group Alternative Asset Management Center Endowment Fund

Bobby B. Lyle '67
Eugene T. Byrne Endowed Faculty Innovation Award
C. Jackson Grayson, Jr. Endowed Faculty Innovation Award
Bobby B. Lyle Endowed Professorship of Entrepreneurial Studies
C. Jackson Grayson, Jr. Endowed MBA Scholarship in Entrepreneurial Studies

Alan J. Marantz and Virginia Marantz
The Marantz Family Scholarship Endowment Fund

W. Scott McDonald, Jr. '59, '61 and Lynn McDonald Murray
The W. Scott McDonald, Sr. Endowed Scholarship Fund

Karl V. Mendel '42
Karl V. Mendel Endowed Scholarship in History *

David B. Miller '72, '73 and Carolyn L. Miller
The David B. Miller Endowed Professor in Business
The EnCap Investments & LCM Group Alternative Asset Management Center Endowment Fund

The Morris Foundation
The Kenneth R. and Linda A. Morris BBA Scholars Endowment Fund



The Noel Family
James L. Noel, III and Melinda C. Noel
J. Stephen King '77 and Carol Noel King '76
Edmund O. Noel '75 and Patrice Oden Noel '75
William D. Noel '82 and Barbara W. Noel
Robert C. Noel '80, '89 and Deanne Moore Noel '89
The Judge James Noel Dean and Professor of Law Endowment Fund

Kevin P. O'Meara '86 and Patricia Ann O'Meara
The Robert F. and Jeanette K. O'Meara Endowed President's Scholarship Fund

C. Robert Palmer '57, '66 and Rebecca S. Palmer
The Palmer Endowed Scholarship Fund

The Estate of Catherine Stockard Perrine
The Laurence and Catherine Perrine Endowed Chair in English Fund *
The Laurence and Catherine Perrine Endowed President's Scholarship Fund *

The Laurence and Catherine Perrine Endowed University Scholarship Fund *

Geo. Garrison Potts '42 and Catherine F. Potts '42
The Dean Charles Shirley Potts Scholarship Endowment Fund

Caren H. Prothro, Perkins-Prothro Foundation
The C. Vincent Prothro Biological Sciences Initiative:
The C. Vincent Prothro Distinguished Chair of Biological Sciences
The C. Vincent Prothro Endowed Research Fund
The C. Vincent Prothro Graduate Fellowship Fund
The C. Vincent Prothro Undergraduate Scholarship Fund

Martin Samuelsohn '41
The Martin Samuelsohn Endowed Scholarship

Richard Lynn Scott '78 and Ann Holland Scott '80
The Richard L. Scott Family Scholarship Endowment Fund

Lynda L. Scurlock '60
Lynda L. Scurlock Endowed Scholarship Fund

Carl Sewell '66 and Peggy Higgins Sewell '72
The Carl and Peggy Sewell Endowed President's Scholarship Fund

Harold C. Simmons and Annette Caldwell Simmons '57
The Leon Simmons Endowed Deanship Fund
The Fairness Simmons Graduate Fellowship Endowment Fund

Michael G. Smith '66, '71
The Michael G. Smith Endowed BBA Scholarship Fund

Paul D. Smith, Jr. and Patty Agustin Smith '78
The Paul and Patty Smith Endowment for Global Theological Education

William Elliott Smith Trust
Wm. Elliott and Mildred Smith Scholarship *

Joe Chat Sumner, III '55
The Joe Chat Sumner, III Endowed Scholarship Fund

The Joni Elaine Templeton Charitable Trust
The Joni Elaine Templeton Scholarship Endowment Fund *

The Texas Instruments Foundation
The Texas Instruments Distinguished Chair in Engineering Education and Director of The Caruth Institute for Engineering Education Endowment Fund

The Tolleson Family Foundation
The Debbie and John C. Tolleson BBA Scholars Endowment Fund

The Rosemary Hagggar Vaughan Family Foundation
The Rosemary Hagggar Vaughan Family Foundation Scholarship

Norma E. Wade
The Norma Wade Library Endowment Fund *



Erroll Wendland '50, '51 and Barbara Cook Wendland '55, '86
The Wendland-Cook Endowed Professorship in Constructive Theology

Katherine Sams Wiley '65
The Katherine Sams Wiley Physics Scholarship Endowment Fund

Liz Williams
The Robert D. and Margaret J. Rogers Endowed BBA Scholars Fund

Ed Wilson and Leslie Z. Wilson '81
The Leslie Z. Wilson Endowed Scholarship Fund

Multiple Donors
Funding for the following endowments has been made possible by the generosity of multiple donors.

- The BBA Scholars Pooled Endowment Fund
- The Cash Birdwell Endowment for Athletics
- The Class of 1986 Teresa Jenkins Carson Memorial Scholarship Endowment
- The Dr. Jim Caswell Endowment for Leadership Development and Training
- Du Xin Research Award Endowment Fund
- The Kelli and Gerald J. Ford Endowed Fund for International Studies
- The Bishop John Wesley Hardt Endowment Fund for Practical Theology
- The Perkins School of Theology Executive Board Endowed Scholarship
- The Judge Richard A. Schell Endowed Program Support Fund
- The Archivist for the Archives of Women of the Southwest Endowment Fund
- Fred S. Stradley Memorial Scholarship
- The Willis M. Tate Distinguished Lecture Series Endowed President's Scholars Fund
- The Marsh Terry Creative Writing Scholarship Endowment Fund

To learn about endowment giving, contact the Office of Endowment and Scholarship Giving at 214-768-4745 or endowment@smu.edu.

* Provided by a realized or future irrevocable planned gift
† Deceased



SMUSM

PO Box 750402
Dallas TX 75275-0402

First Class Presort
U.S. Postage
PAID
Southern Methodist
University

What will SMU achieve in the next 100 years?
Share your ideas. smu.edu/vision

What's Inside

Vision SMU features donors whose gifts are making a difference, from faculty endowments and student fellowships to exciting new facilities and programs, including:

1 | Engineers Set on Bold New Course

With the naming of the Bobby B. Lyle School of Engineering, SMU confirms its commitment to leadership.



2 | New Home for Educators and Researchers

SMU has broken ground on the Annette Caldwell Simmons School of Education and Human Development.



5 | Career Support for a Lifetime

In a down economy, alumni and students increasingly are turning to the Hegi Family Career Development Center.

6 | Scholarships Attract Top Talents

Meadows School of the Arts welcomes its first class of Meadows Scholars, among the country's brightest young artists.

What's Next

In July SMU will celebrate the dedication of new and renovated student housing at its campus in northern New Mexico. The adobe-style casitas, the first of several planned enhancements, will enable classes to be offered through the fall semester for the first time at SMU-in-Taos.

The project is made possible by a \$4 million gift to SMU from former Texas Governor William P. Clements, Jr. '39 and his wife, Rita, as well as other donors. Additional funds are being sought for the planned improvements; gifts of all sizes are welcome. Donors to the project will be recognized through renamed casitas as well as through named rooms within the casitas.

The dedication will be held July 23-26 during the SMU-in-Taos Cultural Institute. To learn about supporting SMU-in-Taos, please contact Vice President for Development and External Affairs Brad Cheves at 214-768-2666 or bcheves@smu.edu.

