

QUARTERNOTES

NEWSLETTER OF THE HAMON ARTS LIBRARY

VOLUME 14, ISSUE 3

SEPTEMBER 2007



From the Director

As the new semester begins, I'd like to take this opportunity to let you know of a few improvements we have made during the summer and remind you of some of the services that we offer.

In order to take advantage of strengths of our staff members, Amy Turner, our Film, Theatre, and Communications Librarian, is now Head of the G. William Jones Film & Video Collection. Beverly Mitchell has taken on subject responsibility for dance as the Fine Arts and Dance Librarian. For music related inquiries, feel free to continue to contact me.

INSIDE THIS ISSUE:

<u>From the Director</u>	1
<u>Metroplex Music Organizations</u>	2
<u>Curator's Choice</u>	2,3
<u>Artstor Update</u>	3
<u>Circulation Notes</u>	4,5
<u>Current and Upcoming Exhibits</u>	6
<u>Watermark</u>	7
<u>Enhanced Study</u>	7
<u>Library Directory</u>	8

As you will read later in this issue, we recently updated the 2nd floor group study room to include projection capability in order to allow students to practice presentations. In the spring, we also upgraded our basement group listening rooms to provide podcasting capability, for which microphones are available for checkout in the A/V area. See <http://www.smu.edu/cul/hamon/services/rooms.htm> for more information about the rooms available for use at the Hamon.



In order to increase access to materials and bring our policies in line with other libraries, we have made a change to our A/V circulation policies. The main change is that staff and students will now be allowed to check out items for 3 days at a time. In addition to our 8,000+ CD collection, many recordings are also available through Classical Music Library, which is accessible through the Online Resources page of PONI at <https://poni.smu.edu/>. Due to the success of the program, audio reserves will continue to be available on iPods for checkout, as well as available locally on iTunes in the Hamon Information Commons area in our basement. For more detailed information about Hamon's circulation policies, see <http://www.smu.edu/cul/hamon/services/loanperiods.htm>.

The Hamon librarians will be happy to teach instruction sessions, give tours, or provide reference assistance to all patrons. Please stop by and introduce yourself – we're here to help!

Alisa Rata Stutzbach
Director and Music Librarian
arata@smu.edu



2-Day Book Sale Event!

October 4 & 5, 2007

**Hamon Staff will be gathering material to be sold at bargain prices
Art * Music * Dance * Theatre * Film * Fiction * Plays * Sheet Music
Sale located in the Hawn Conference Room and AV Information Commons.**

Visit us Online at <http://www.smu.edu/cul/hamon>

Metroplex Music Organization Partnership

The Bradshaw Gallery in the Fine Arts Division at Dallas Public Library was electrified with anticipation on June 29th as representatives of groups throughout the area converged for a meeting for music organizations from throughout the Metroplex. The Hamon Library participated as a co-organizing and co-hosting partner to encourage resource sharing and co-operation amongst music organizations and create a greater sense of community. More than 80 attendees filled the room and kept a buzz of conversation going about their projects and plans.



Speakers shared information about their own organizations and the efforts they are making to be involved in the lives of their community members. Many of these organizations have made overtures to forge connections and cooperative arrangements already. Combining these initiatives seems like the next big step. Presentations were made by Dallas Arts Learning Initiative (DALI), Alternative Arts Alliance (A3), and Cooperative Arts News.

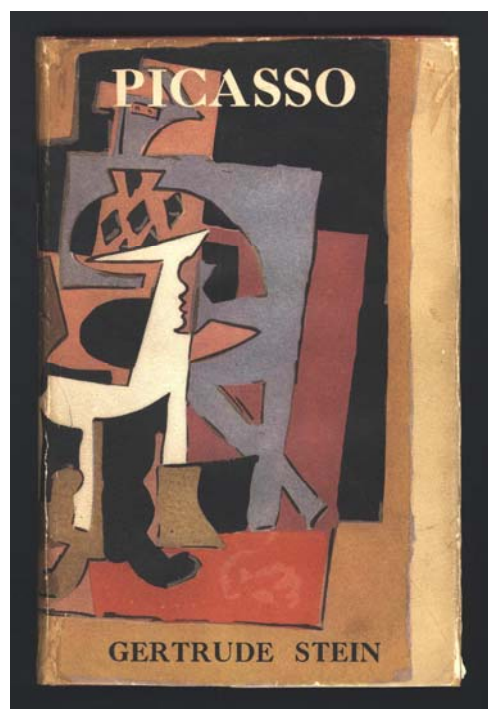
Hamon Director Alisa Rata Stutzbach discussed the fledgling Dallas Arts Library Consortium, which was started to help make library patrons aware of the resources available at several Dallas Area libraries. The DALC website at www.smu.edu/cul/dalc describes the participating libraries and gives a link to their online catalogs, so researchers can move easily between the catalogs to find what they need. The DALC was used as an example of an idea that has great potential, but will not achieve its full capacity without active interest.

Many attendees had ideas and suggestions for collaboration ideas. Past ideas that were discussed included coordinated exhibit topics, concert series, cross promotion and online communication forums. Laura Smith of the Dallas Foundation shared information with the group about requesting grant funding for partnership projects. The event ended with the buzz of exciting possibilities, as all attendees seemed to anticipate great ideas coming together. Hamon will continue making meaningful contacts with the Dallas arts community and increase resources available to our users.

Chris Edwards, cward@smu.edu

Curator's Choice: On Preserving Valuable Resources

For this issue of *Quarter Notes* I decided to report on another role the staff of Bywaters Special Collections takes on that not many people are aware of – the housing and preservation of rare books or volumes that have been signed by the author. Most of the time the staff is involved in caring for archival collections, works on paper, and Hamon Gallery responsibilities, but there are times when the staff is called in to check on rare or signed books located in the Hamon Library or donated as part of an archival collection. One example is the 1939 publication of *Picasso* by Gertrude Stein (1874 – 1946). Although she was born in America, Stein spent many of her adult years in Paris, France, where she met many artists of the time, including Picasso. Her book, *Picasso*, was originally written and published in French in 1938. In October of the same year it was translated into English by Stein's long-time confidante, Alice B. Toklas, and published in London by B. T. Batsford Ltd. The following year the book was published in the United States in identical form by Charles Scribner's Sons. Fortunately, the copy that arrived in the Otis and Velma Davis Dozier Collection still had its original, and colorful, dust jacket. Though slightly worn with small tears, the dust jacket was successfully repaired by book conservator Jan Sobota at SMU's



Picasso by Gertrude Stein (London: B. T. Batsford LTD, Charles Scribner's Sons, 1939), The Otis and Velma Davis Dozier Collection

(Continued on page 3)

Curator's Choice:

(Continued from page 2)

Bridwell Library. In addition, a protective archival phase book container, which provides structural support and protection from dust, dirt, light, and mechanical damage, was measured and constructed to fit the book.

“A rose is a rose is a rose is a rose”.....Gertrude Stein



For additional archival and conservation information:

<http://www.nedcc.org/home.php>

Ellen Buie Niewyk,
eniewyk@smu.edu



Anyone interested in visiting
Bywaters Special Collections may contact:

Ellen Buie Niewyk (eniewyk@smu.edu or 214-768-1859) or
Sam Ratcliffe (sratclif@smu.edu or 214-768-2303)

A list of collections in Bywaters Special Collections may be found at:
<http://www.smu.edu/cul/hamon/collections/bywaters.htm>

ARTstor Update

www.artstor.org

ARTstor is an online database and image service to which Hamon subscribes. The images provided through ARTstor are licensed for academic use and cover a wide range of topics. The database receives frequent updates of new images and improved browsing options. Recently, for example, ARTstor announced additional collections of almost 10,000 new images. These new collections consist of 4000 new contemporary images from the Visual Artists and Galleries Association (VAGA), 4000 images of manuscripts and early print books from Oxford's Bodleian Library, 1700 images of Islamic art and architecture, and a unique collection of 200 photographs on the architectural history of Venice. These new images are exemplary of the continual improvement of this resource. ARTstor also publishes user guides to help find resources that pertain to many interdisciplinary topics.
http://www.artstor.org/info/using_artstor/teach/interdisciplinary.jsp.

For more information on this resource contact Beverly Mitchell, Hamon's Fine Art Librarian at bmitchel@smu.edu or (214)768 2796.

Reserves on the Run

iPods available for
Check-out
at the Hamon Audio-
visual center



Circulation Notes

For the start of the new school year, we have just a few notes, updates, and reminders from the Hamon Circulation Staff

Loan Periods

To better serve the SMU Community we are continually reviewing our circulation policies. Check our website for our most recent changes and to look out for future revisions. <http://www.smu.edu/cul/hamon/Services/circulation.htm>

New Book Section

Some selected items from our recent acquisitions can be found in the New Book Section in the first floor Reference Reading area.

If you have recently been published, let us know and we'll showcase your new book.

Fall Reserves 2007

Please remember to get your material in early for Fall Reserves.

Forms can be picked up at the Circulation desk or downloaded from our webpage at:

<http://www.smu.edu/cul/hamon/Services/reserve%20request.pdf>

E-Reserves

Please do not hesitate to place your articles or photocopied items on E-Reserves. Students can save time by accessing E-Reserves from remote locations.

As always, please remember to turn in Reserve requests early and **allow at least 7 days for processing.**

****Important:** Consult the CUL Faculty Guide for important general information regarding Reserves:

<http://www.smu.edu/cul/fic/circulation/FacultyGuideReserves.pdf>

Last Year's Reserves

Instructors: Don't forget to come and pick up all your personal books and photocopies from the past academic year. All personal Reserve items from 2006-2007 are available for pick-up in the Circulation manager's office.

SMU Students and Staff: PONI On-Line Self-Renewal

In effort to meet the needs of our patrons, the Hamon Arts Library now offers PONI self-renewal. Click on "My Account" from PONI. Log in with your last name and 18-digit SMU ID barcode or your SMU ID. Then check boxes of those items you wish to renew. Click on Renew items. Successful renewal will read: Renewed.

Blocked renewal: No renewal prompt will appear.

****Why your item may not renew:** You may have reached the maximum limit for number of renewals, check-outs, lost items, numbers of overdue items, or overdue fine amount. **Some categories of guest borrowers may not be eligible for self-renewal.** Please check with the circulation desk for further information concerning your account. Please remember late charges will automatically be issued to your account if items are renewed after the due date.

Bound Periodicals

We made some moves in our Periodicals section, so if you cannot find what you are looking for, please check with the Circulation desk to see if your title has been moved to **Limited Access**.

The Hamon Arts Library has marked shelves on each floor with red tape, designated for re-shelving. As always, please ask for help from the Hamon staff if you cannot find the item(s) you need.

(Continued on page 5)

Circulation Notes

(Continued from page 4)

General Library Suggestions

Please remember that we are doing all we can at the Hamon Arts Library to improve patron services.

We have installed **suggestion boxes at the Circulation and Reference desks** for your comments.

As always, here are a few other things you can do to help us serve you better:

- Familiarize yourself with **Hamon circulation policies** such as: check out periods, on-line renewals, study rooms, and fines and fees.
- Make sure **all Reserve materials are brought back** directly to the student assistants at circulation desk for proper check-in.
- Try to keep noise levels down to a minimum.
- **Remove all bookmarks and sticky notes** from items before check-in.
- Please **aim questions** about searching the catalog, using reference tools, or search strategies to the **Reference & Information desk or ask Hamon librarians.**
- **Report any perceived problems** in the stacks or with library items to Hamon staff.

Our goal is to provide the highest possible level of service to help you achieve the most from your academic endeavors.

If at anytime, you have concerns or questions about our library, please feel free to contact any member of the Hamon Library staff.

Thank you and have a wonderful semester.

Chris Leamy, cleamy@smu.edu
Head of Circulation Services

Loan Periods/Renewals

Fine Art & Music Books

SMU Undergraduates and Graduates	3 weeks, 5 renewals
SMU Faculty	1 year, no renewals
SMU Staff	120 days, 3 renewals

Audiovisual Materials

SMU Undergraduate Students	3 days, no renewals
SMU Graduate Students	3 days, no renewals
SMU Faculty	1 week, 3 renewals
SMU Staff	3 days, no renewals

Limited Access Materials

SMU Faculty	1 day, 3 renewals
All Other Borrowers	2 hours, library use only, 3 renewals



Need research assistance?

Ask a Librarian!

www.smu.edu/cul/ask



Upcoming Exhibition Notes

Printing in Color Hawn Gallery, Hamon Arts Library October 1, 2007 – December 16, 2007

Drawing on the rich resources of the Hamon's Jerry Bywaters Collection on Art of the Southwest, this exhibition explores various techniques of making color prints. Print matrices such as metal plates and linoleum blocks, assorted proof impressions, and finished prints by Janet Turner (1914-1988) and Octavio Medellin (1907-1999) demonstrate the steps in producing multicolor prints. The prints that will be on view also provide examples of the three main printing techniques: intaglio, in which the design is incised into the matrix; relief, in which area around the design is cut away from the matrix surface; and lithography, in which the design is flat upon the matrix surface.

Printing in Color is offered in conjunction with the course Art History 3364: History and Theory of Prints, taught by assistant professor Lisa Pon. Looking assignments for the class will take place in the exhibition, and members of the general viewing public are invited to try answering questions from ARHS 3364 assignments made available on the gallery handouts. Responses from students from the last time the class was offered (spring 2005) and this semester (fall 2007) will be added while the exhibition is on view.



A print by Octavio Medellin from the upcoming exhibit

Current Exhibition Notes

Susan Barnett: *Thought Patterns* Hawn Gallery, Hamon Arts Library July 7, - September 16, 2007

Susan Barnett is a second year Masters of Fine Arts student at the Meadows School of the Arts. Her recent paintings on display in the Hawn Gallery explore systems of the mind. Initially this body of work originated with paintings based upon a specialized type of Latin Square popularized by the Sudoku puzzle. The properties of a Latin Square result in a balanced repetition of all the elements, numbers which she translated into symbols.



Hard Headed, 2007, Acrylic on Canvas, 63 3/4" x 63 3/4"

The addictive nature of Sudoku is in part due to its reassuring properties: known rules and an ultimate "correct" answer. It is a "closed end" system. Over time Barnett began to recognize in these systems the ways in which we organize, reveal and guard against the inherent chaos of the universe.

In the process of investigating these ideas, Barnett discovered a type of drawing that describes a distributed network, a way of ensuring that system stress is distributed uniformly so that no one node becomes the focus or center. She generates these drawings based on one rule designed to enforce an even distribution: no more than 5 lines intersecting at any one point. The resulting drawings are random, "open ended systems" that feel organic.

These drawings in turn developed into ambiguous folded structures that seem to fly across the surface. In many instances Barnett retains the use of

the grid and her system of symbols used in the initial Sudoku paintings as a way of imposing order in the chaos. Barnett says she is interested in "how we make sense of the world through an endless process of recreating meaning and memory, and how we communicate our personal systems of meaning to each other."

Joseph Brodsky's Watermark

Friends of the SMU Libraries recently granted partial funding to Hamon for the purchase of a unique publication of *Watermark*, a series of reflective essays on Venice by Joseph Brodsky. The acquisition was also made possible by additional contributions from the English department, DeGolyer Library, and Assistant Professor of Art History, Dr. Lisa Pon, who coordinated these contributions.

Not only is this publication rare as one of fifty copies designed by the printmaker Peter Koch with photographs by the artist Robert Morgan, it is also part of a personal history for Morgan. As Koch reveals in his description of this book, "Brodsky dedicated *Watermark* to his friend the American painter, Robert Morgan who has lived in Venice for more than 30 years and the book is illustrated with 14 photo-gravures made from his original photographs." The photographs are printed onto a handmade "Da Vinci" paper by Twinrocker, and Koch and Morgan signed each copy.

The campus-wide investment in this book demonstrates its value as a teaching resource for several of the humanities. Dr. Pon plans to use this book in her seminars on the history of the print, and there are also other publications from Peter Koch in Bridwell and DeGolyer Libraries. Conceivably, these precious and stunning works with *Watermark* could be displayed in an exhibition for SMU and the Dallas community.

Beverly Mitchell, bmitchel@smu.edu

Peter Koch Printers at <http://www.peterkochprinters.com/show.php?bookid=66> August 7, 2007

Twinrocker Handmade Paper at <http://www.twinrocker.com/> August 7, 2007

The Bicentennial of Lithography: a keepsake for the members of the Book Club of California in DeGolyer and Bridwell Library Special Collections, and

Toni Morrison. *Five Poems*. Silhouettes by Kara E. Walker in Bridwell Library Special Collection

Herakleitos, translated from the Greek by Guy Davenport in Bridwell Library Special Collections.

Enhanced Study Space Thanks to President's Partners Grant

With the help of a President's Partners grant, Hamon staff have added electronic projection equipment to our second floor group study room. Hamon 2250 is a 336 square foot group study room with a ten-seat conference table, room for additional seating, and a large dry erase board. With its new set-up, the room can support students and faculty needing to create, practice, and deliver presentations or needing to use online visual resources as a group. Our goal with this and future improvements is to support University and Central University Libraries goals to enhance learning through the use of technology, and enhance the quality of the libraries by making them more responsive to student and faculty space needs.

Users can access the space by checking out the key and equipment controls from the circulation desk. Time in this room can be reserved at the circulation desk or via Hamon's Administrative Assistant, Chris Edwards (214.768.4437 or cwedward@smu.edu).

The room is not equipped with a PC but any laptop computer with a VGA outlet or Mac with a mini DVI port can be connected to the ceiling mounted projector via a wall plug and a cable loaned out by the library. We anticipate a great deal of demand so the key and equipment will be checked out or reserved in 2 hour intervals with no renewals allowed. Audiovisual study rooms for group listening and podcasts are still available in the Hamon basement AV center, and conventional group study space is provided in the third floor group use room. For information on any of Hamon's study spaces, Visit: <http://www.smu.edu/cul/hamon/services/rooms.htm>



Hamon Arts Library
Meadows School of the Arts
P.O. Box 750356
Dallas, TX 75275



Phone: 214.768.2894 Fax: 214.768.1800

VOLUME 14, ISSUE 3: SEPTEMBER 2007

The Hamon Arts Library is located in the Meadows School of the Arts, which centers on the study, creation, and analysis of the visual, performing, and communication arts at the undergraduate and graduate levels within a liberal arts environment. And, as a branch of the Central University Libraries (CUL), we encourage you to visit their web-site (<http://www.smu.edu/cul>) to take full advantage of the myriad resources available.

Hamon Library Directory

Information	214.768.2894
Circulation Desk	214.768.3813
Audiovisual Desk	214.768.3812
Reference Desk	214.768.1853

Staff

Alisa Rata Stutzbach 214.768.1855
Director & Music Librarian

Beverly Mitchell 214.768.2796
Fine Arts & Dance Librarian

Amy Turner 214.768.1856
Film, Theatre & Communications Librarian

Chris Leamy 214.768.3814
Head of Circulation Services

Greg Dawson 214.768.1858
Night/ Weekend Supervisor

Sam Ratcliffe 214.768.2303
Head of Bywaters Special Collections

Ellen Niewyk 214.768.1859
Curator, Bywaters Special Collections

Chris Edwards 214.768.4437
Administrative Assistant

Hamon Arts Library Hours

Regular Semester Hours

Mon: 8AM — Midnight
Tue: 8AM — Midnight
Wed: 8AM — Midnight
Thurs: 8AM — Midnight
Fri: 8AM — 6PM
Sat: 9AM — 5PM
Sun: 1PM — Midnight

Events And Exhibits

Through Sept 16: Susan Barnett: *Thought Patterns*, Hawn Gallery.

Oct 1 - Dec 16: *Printing in Color*, Hawn Gallery

Oct 4 - 5: *Hamon Book Sale Event*, Hawn Conference Room and Hamon AV center.