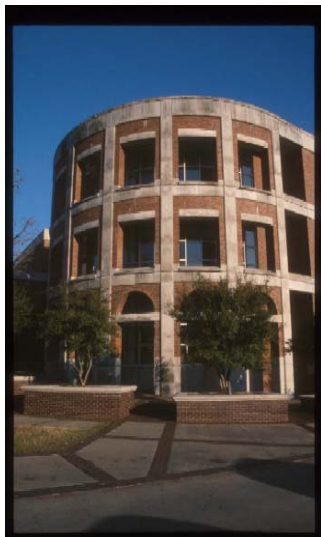


Quarter Notes

Volume 11, Issue 3

August, 2004



Inside this issue:

From the Director

1

Fine Art/Art History

2

News From Special Collections

3

Music/ Theatre/ Dance

4

Audio-Visual News

4

Print Circulation News

5

Other Hamon News

5

From the Director

From the Director

On the way to my family home in a little town in Southwest Virginia this summer, I stopped at the “scenic overlook” on the Orby Cantrell Highway (US 23) in Big Stone Gap. As I walked to the rustic fence separating the tourists from the almost sheer drop to the valley below, I marveled at the magnificent view, realized how much I miss seeing it on a regular basis, and realized how often I used to drive that highway without ever even noticing the inspiring vistas.

In this issue of *Quarter Notes*, we have decided to acquaint or perhaps reacquaint you with the services, space, and resources of the Hamon Arts Library; all available to you on a regular basis. So—come on over and enjoy the view!

Tinsley Silcox

Secrets of the Hamon Library ...

What’s Behind those Closed Doors?

Ever wander up to the second floor of the Hamon Arts Library and wonder what’s behind the two large Santa Fe - style doors? Several individuals have worked up enough courage to ring the doorbell and ask “what’s in there?” Sam Ratcliffe and I always greet these daring people at the door and invite them in for a tour and/or answer questions about our area. Besides our offices, Bywaters Special Collections - officially the “Jerry Bywaters Special Collections Wing” - consists of a research room, a cataloging room, a workroom for archival and gallery preparation, and a vault where archival material is stored. The doors are kept closed, not to keep people out, but to contain the noise from the many activities going on behind them from emanating out to quiet study areas on the second floor of the library.

The Jerry Bywaters Special Collections Wing was established in 1990 as the



repository for archival material relating to the arts of Dallas and the Southwest (for a complete list of all the collections visit our website at: <http://www.smu.edu/cul/hamon/>

(Continued on page 2)

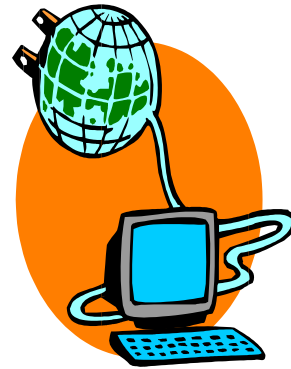
(Continued from page 1)

collections/bywaterscollection.htm). These materials are kept in a climate-controlled vault where the temperature and humidity are monitored at all times to ensure the safety and care of the fragile materials. Outside of the vault is our workroom where we process (i.e., sort, identify, and re-house in acid-free sleeves or boxes) archival collections and prepare for exhibitions in the Hamon Gallery located on the first floor of the Hamon Arts Library (view the gallery web-site at: <http://www.smu.edu/cul/hamon/gallery/gallery.htm>). Gallery exhibitions include archival matting and framing of rare archival materials and works of art on paper. The cataloging room is where information about the processed materials is entered in the computer database which is then used by the Bywaters Special Collections staff and those interested in doing research in the archives. In addition, one can also find information about the holdings through SMU's PONI cataloging system. For example, one can do a search for "Greer Garson" and come up with the "Greer Garson Collection" which is housed in our area. Scroll down the screen and you will see the electronic finding aid which describes the contents of the collection (<http://www.lib.utexas.edu/taro/smu/00002/smu-00002.html>).

Many people have ventured into our area and found what they needed for class papers, master's theses, and even books. If you are interested in doing research in Bywaters Special Collections, and dare to come through the closed doors, it is recommended that you make an appointment in order for the staff to pull the necessary materials before you arrive and make your visit more efficient. For appointments you may call Sam Ratcliffe at 214-768-2303 or me at 214-768-1859. Ellen Buie Niewyk Curator; Bywaters Special Collections

New Things in the Libraries

The Digitization Committee of the Central University Libraries



We're Going Digital!!

In 2002, the Dean's Policy Group of the Central University Libraries approved the creation of a Digitization Committee. Comprising membership from all the libraries across the University, it was charged with the responsibility of establishing strategic directions and goals for digitization projects. More recently (this past Spring), the CUL hired a Digital Content Manager to work with the Committee and aggressively begin developing digitization projects with both the libraries and the faculty. The Committee's membership is drawn from the CUL and its' units as well as other University Libraries including both the Bridwell and the Underwood Law Libraries. Currently, the members are: Dr. Sam Ratcliffe (Head, Bywaters Special Collections) and Ellen Niewyk (Curator, Bywaters Special Collections) of the of the Hamon Arts Library; Joe Milazzo (Government Information and Map Resources Librarian) of the CUL; Ben Huseman (Curator of Maps & Graphic Arts) and Nancy Rubenstein (Cataloger for Archival Collections) of the DeGolyer Library; and Sherilyn Bird (Co-team Leader, Center for Information Processing) of the CUL. Finally, as the Digital Content Manager, Dennis Moser is member of the Systems Office of the CUL. There are currently two vacancies that were previously held by staff from the Bridwell Library and the Underwood Law Library which will be filled in the next year.

While projects have initially come from the librarians involved, new projects are actively being solicited from the faculty. As such, it is these kinds of projects that will encourage ever-broader use of the library collections.

If you are a faculty member who is interested in developing a digitization project to facilitate your teaching or if you know a faculty member who be interested in such a project, please do not hesitate to contact either Dennis Moser, Digital Content Manager, via email at dmoser@smu.edu or by phone at 214.768.1268, or any of the Committee Members listed above.

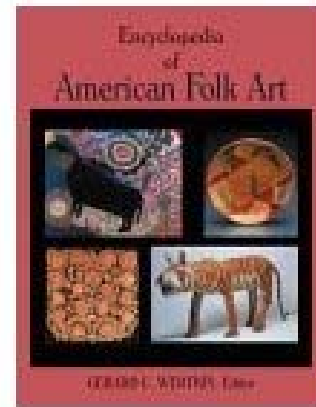
News in Fine Art / Art History

Fine Art News -- A Review

Encyclopedia of American folk art. Wertkin, Gerard C. editor. New York : Routledge, 2004.

Hamon Library, Reference.
NK805 .E6 2004.

The Hamon Arts Library is extremely pleased to announce the addition of the *Encyclopedia of American Folk Art* to our fine arts reference collection. This book is "intended as a resource for researchers in American Folk Art and the categories of artistic endeavor that have become associated with it in recent decades through patterns of institutional collecting, museum exhibitions, and related publications and programs." Any art that is categorized as 'folk art', or 'naïve', 'self-taught', 'vernacular', etc. is considered to be a part of this tradition.



The single volume is simply organized with a list of entries, followed by notes on contributors, a lengthy introduction and then, the bulk of the work, a lengthy mass of encyclopedia entries. Reference tools include bibliographies following each article, cross references, and a thorough analytical index. The *Encyclopedia* includes more than 600 A-Z articles on individual artists, schools, techniques, styles, ethnic and religious traditions, and heroes, both in fact and fiction, who have served as a source of inspiration.

The work itself is based on the work of over 90 contributors. The entries are accompanied by 8 two page color inserts as well as 100 black-and-white photos that demonstrate the various styles, techniques and types of American Folk art.

This is a wonderful resource for both students and specialists. It is a valued contribution to the Hamon Arts Library and it will become an essential tool for anyone researching American folk art traditions in our library.

--J. Brandon Pope
Fine Arts Librarian



Favorite Art/Art History Research Websites

- <http://www.smu.edu/cul/hamon/research/artindex.htm>
- <http://www.smu.edu/cul/hamon/research/reference/artdict.html>
- <http://www.groveart.com/index.html>
- http://www.smu.edu/cul/or/Indexes_Art_History_and_Art.html

Music, Theatre, Dance

New Developments in Online Resources for the New Academic Year!

Welcome back! Some great new things are happening in the libraries this year, especially in the realm of electronic resources.

Classical Music Library

“This excellent listening tool should complement libraries' music collections [. . .] it should serve as an excellent resource for libraries that support music programs. Highly recommended.”

CHOICE Magazine

“This product could be the future for access to sound recordings and will be welcomed by many users. Libraries where Internet access to sound recordings could provide a good solution will want to investigate this product.”

Library Journal

I am pleased to announce that we have recently started a subscription to the award-winning Classical Music Library, the “world’s first streaming music service for libraries.” With the addition of this resource, we have enhanced our present collection of sound recordings to include thousands of licensed recordings from labels such as EMI, Hyperion, Vox, Vanguard, and many others. CML has recently signed on with BMG Classics as well, which means the RCA Red Seal Classic Library will soon be available.

Some of the great benefits this new service will provide us are:

- Over 35,000 tracks of music accessible online from on- or off-campus
- Easy keyword searching and helpful browsing functions
- Brief biographical information as well as direct links to *Grove Music Online* for hundreds of composers
- Large collection of contemporary music and works of women composers
- Easy comparison of several interpretations of a work or composer due to content from multiple labels
- Ability to create playlists for personal or class use—faculty can even create a playlist of music for all their students as a course listening list or include URLs for specific recordings in their course webpages!
- Download capability for a small fee—should you wish to burn the recordings onto a CD or listen on your personal computer while not online—as well as the ability to order a Custom CD of your favorite tracks

I welcome you to try out this exciting and easy-to-use new resource at <http://internal.smu.classical.com/>. Look for the yellow users guide signs near the computers, or come ask a librarian to show you how it works!

Alisa Rata
Music, Theatre, and Dance Librarian



<http://internal.smu.classical.com/>

Print Circulation

Fall Reserves 2004

Please remember to get your material in early for Fall Reserves. Forms can be picked up at the Circulation desk or downloaded from our webpage at: http://www.smu.edu/cul/hamon/Services/RESERVE_REQUEST.doc

E-Reserves

Please do not hesitate to place your articles or photocopied items on E-Reserves. Students can save time by accessing E-Reserves from remote locations.

As always, please remember to turn in Reserve requests early and **allow at least 7 days for processing.**

****Important:** Consult Faculty Guide for important information regarding E-Reserves:

<http://www.smu.edu/cul/faculty.pdf>

Last Year's Reserves

Don't forget to come and pick up all your personal books and photocopies from the past academic year. All personal Reserve items from 2003-2004 are available for pick-up in the Circulation manager's office.

SMU Students and Staff: PONI On-Line Self-Renewal

In effort to meet the needs of our patrons, the Hamon Arts Library now offers PONI self-renewal. Click on "my account" from PONI. Log in with your last name and 18-digit SMU ID barcode (at the bottom of your PONI ID). Then check boxes of those items you wish to renew. Click on Renew items. Successful renewal will read: Renewed. Blocked renewal: No renewal prompt will appear.

****Why your item may not renew:** You may have reached the maximum limit for number of renewals, checkouts, lost items, numbers of overdue items, or overdue fine amount. **Some categories of guest borrowers may not be eligible for self-renewal.** Please check with the circulation desk for further information concerning your account. Please remember late charges will automatically be issued to your account if items are renewed after the due date.

Summer Shifting

The second-floor and third-floor shifting have been completed, eliminating overcrowding and creating additional space for expansion. I hope you find these areas of the collection easier to use, with even fewer shelving errors. The Hamon Arts Library has marked shelves on each floor with red tape, designated for re-shelving. As always, please ask for help from the Hamon staff if you cannot find the items you need.

General Information

Please remember that we are doing all we can at the Hamon Arts Library to improve patron services.

We have installed **suggestion boxes at the Circulation and Reference desks** for your comments.

(Continued on page 7)

Audio-visual News



A View from behind the Desk of the Audio-Visual Center

Reintroducing to you: The Audiovisual Center

The Audiovisual Center includes the staffed Central Control area where the recordings and central distribution system are located, 44 carrels populated with various pieces of audio and video equipment, and three group study rooms.

The Audiovisual collection includes LPs, CDs, DVDs, VHS tapes, laser discs, and interactive CD-Roms, spanning the literature of western art and music from ancient times to the present, popular and ethnic sound recordings, and videos of dance, opera, and theater arts.

The Center also houses all microform holdings of the Hamon Arts Library and has a microfilm and microfiche reader/printer available.

Circulation Policies and Procedures

The collections of the Audiovisual Center circulate to SMU students, faculty, and staff holding a barcoded SMU ID. Non-SMU patrons may utilize materials in-house by presenting any valid photo ID.

Audiovisual materials circulate under the following guidelines:

- Undergraduates -- 2 hours (in-house)
- Graduates/Staff -- 1 day
- Faculty -- 1 week
- non-SMU patrons -- 2 hours (in-house)

The Hamon Arts Library strictly forbids copying of recordings using its equipment or software. The Audiovisual Center is not able to provide reproduction equipment for activities outside the Hamon Library. Equipment is available through Meadows Facilities. The Hamon Arts Library does not make copies of our recordings or those owned by others.

Reserves

Faculty may request that materials be placed on reserve. Such requests should be made at the Audiovisual circulation window. Reserve materials are restricted to two hours in-house use only.

In Recent News: Daniel Delgado, erstwhile supervisor of AV Circulation, has accepted a position in the Norwick Center for Informational Technology at Fondren Library Center. Daniel will be working as a video production specialist.



As Daniel takes his leave, Audio-Visual Circulation will be handled by Chris Leamy, Head of Circulation Services.

Good for you Daniel! Keep in touch with us, we wish you well.

-The Hamon Staff

A Few Other Changes in the Library:

We now have a significant number of arts journals available in full text through subscriptions to JSTOR, Arts and Humanities Index, International Index to Music Periodicals Full-Text, and soon through our new subscription to the full-text version of the International Index to Performing Arts. All of these databases can be searched through the subject browsing index of our Online Resources page, and individual journals can be accessed through searching the electronic journals section. If you are looking for journal articles, please check our Online Resources page first, because an easily accessible full-text version very well might be available! You can then print or e-mail pertinent articles to yourself. In addition, due to the popularity of full-text journals and the higher cost of some print periodicals, the journals *Arts in Psychotherapy* and *Journal of Cultural Economics* are now only found in electronic form. Please take a few minutes to explore our ever-growing and changing electronic resources at <http://www.smu.edu/cul/or/index.html>.

Alisa Rata

Music, Theatre, and Dance Librarian

Print Circulation (Continued)

(Continued from page 5)

A few other things you can do to help us serve you better:

- Familiarize yourself with **Hamon circulation policies** such as: check out periods, on-line renewals, study rooms, and fines and fees.
- Make sure **all Reserve materials are brought back** directly to the student assistants at circulation desk for proper check-in.
- Try to keep noise levels down to a minimum.
- **Remove all bookmarks and sticky notes** from items before check-in.
- Please **aim questions** about searching the catalog, using reference tools, or search strategies to **the Reference & Information desk or ask Hamon librarians**.
- **Report any perceived problems** in the stacks or with library items to Hamon staff.

Our goal is to provide the highest possible level of service to help you achieve the most from your academic endeavors.

If at anytime, you have concerns or questions about our library, please feel free to contact any member of the Hamon Library staff.

Thank you and have a wonderful semester.

Chris Leamy

Head of Circulation Services

HAMON ARTS LIBRARY

Hamon Arts Library
Meadows School of the Arts
P.O. Box 750356
Dallas, TX 75275

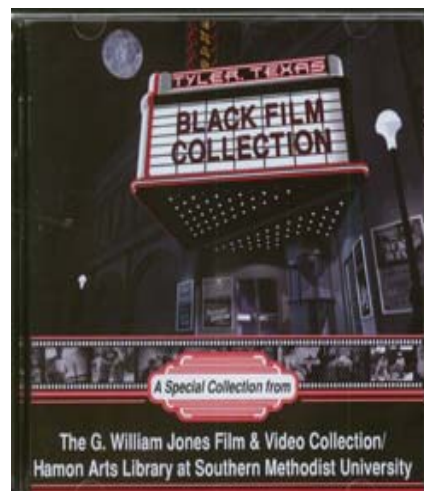
Phone: 214.768.2894 Fax: 214.768.1800
Email: hamonadmin@smu.edu



We're On The Web!
[Http://www.smu.edu/cul/hamon](http://www.smu.edu/cul/hamon)

The Hamon Arts Library is located in the Meadows School of the Arts, which centers on the study, creation, and analysis of the visual, performing, and communication arts at the undergraduate and graduate levels within a liberal arts environment. And, as a branch of the Central University Libraries (CUL), we encourage you to visit their website (<http://www.smu.edu/cul>) to take full advantage of the myriad resources available.

CURRENT ATTRACTIONS!!



The DVD boxed set of the Tyler, Texas films is currently available for purchase. The order form can be found on the Internet at:

www.smu.edu/blackfilms/