

PERUNA PASSPORT

2024–2025
ACADEMIC GUIDE
FOR YOUR FIRST YEAR AT SMU





TABLE OF CONTENTS

1	Welcome to SMU	18	Transfer Students
2	Mustang StartUp	18	Prepare for Advising
2	Prepare for Mustang StartUp	18	Get the Transfer Credit You've Earned
3	Mustang StartUp	18	Transfer Shock
4	University Advising Center	19	Attending College While Working Full Time
4	Pre-Major Advising	20	Organizational Tips for Commuting Students
4	Advising After Mustang StartUp	20	Transfer Connection Points
4	The Advising Partnership	21	Academic Engagement
5	Undergrad Must-Do List	21	Active Learning
6	Your Academic Plan	21	Time Management
7	AP Exam Credit Chart	21	Academic Integrity
8	IB Exam Credit Chart	22	Communicating with Professors
9	Choosing Your Major	22	Degree Planner
10	Plan Your First-Term Schedule	22	Peer Academic Leaders (PALs)
11	The Common Curriculum	23	Registrar Essentials
11	General Education: The Common Curriculum	24	Enrollment 101
11	Foundation Requirements	25	Resources and Opportunities
14	Breadth Requirements	25	Reach Your Potential
15	Graduation Requirements: Proficiencies and Experiences	27	Broaden Your Experience
16	Common Curriculum (CC) Requirement Tracker	30	2024–2025 Condensed Academic Calendar
17	Common Curriculum (CC) External Credit Policies	32	Learning Strategies Workshops
		Inside Back Cover	Important SMU Numbers and Websites
		Back Cover	Campus Map

MEET PERUNA!

When SMU was given a spirited miniature black horse in 1932, students immediately adopted him as the Mustang mascot and named him Peruna. His name came from the SMU fight song, "Peruna," which was adopted in 1916 and refers to an early patent medicine said to have a kick. Nine Perunas have served SMU, appearing at Mustang football games, University celebrations and community events. Today, dedicated Mustangs and fans display "Pony Ears" in recognition of the heart, spirit and loyalty of the little mascot, Peruna.



SMU will not discriminate in any program or activity on the basis of race, color, religion, national origin, sex, age, disability, genetic information, veteran status, sexual orientation or gender identity and expression. The Executive Director for Access and Equity/Title IX Coordinator is designated to handle inquiries regarding nondiscrimination policies and may be reached at the Perkins Administration Building, Room 204, 6425 Boaz Lane, Dallas, TX 75205, 214-768-3601, accessequity@smu.edu.



WELCOME TO SMU



Welcome to SMU. We are delighted to have you join us and are committed to helping you achieve your goals as a scholar and lifelong learner. It is an exciting time on the Hilltop with our groundbreaking research and partnerships, new campus facilities and strong athletic achievements as we enter the Atlantic Coast Conference.

To set your academic journey in motion, it is essential to take advantage of the myriad of opportunities available during your time here. Use your *Peruna Passport* as a guide to our innovative and flexible Common Curriculum, academic advising process and a host of other resources designed to support you.

Joining the Mustang family links you to a worldwide network of over 134,000 alumni, each with unique perspectives and experiences. Your potential for persistence and resilience is apparent, and one of the best places to realize your aspirations is in Dallas, a global hub where people strive to make a positive impact on the world.

So, "Pony Up!" and make the most of the exceptional education and considerable resources available to you at SMU. We're here to support you every step of the way.

Welcome aboard!

Sincerely,
R. Gerald Turner
President

Dear Mustang,

Welcome to the next step of your journey at SMU: navigating the academic adventures ahead. *Peruna Passport* is SMU's academic resource guide for incoming students. It is designed to provide you with important information regarding the University Advising Center and advising at SMU, first-year course requirements and recommendations, the Common Curriculum, academic policies and procedures and campus resources.

We hope that you will read it carefully, reflect upon your academic interests and goals, take notes and be sure to contact your Academic Advisor with any questions you might have. We encourage you to open your mind to the wide array of majors and minors at SMU, seek to learn something tomorrow that you did not know yesterday and, above all, enjoy and appreciate the opportunity to think, discover and grow every single day!

Welcome to SMU and Pony Up!

Ellen C. Richmond
Director of the University Advising Center

FOLLOW ALONG WITH US!



@smudallas



@smu_uac



@SMU



@SMU





MUSTANG STARTUP

PREPARE FOR MUSTANG STARTUP

The first step of Orientation at SMU is **Mustang StartUp**. Follow these steps to get the most out of your Mustang StartUp experience!

1 **Submit Required Health Forms**

All new Mustangs must submit proof of the Meningitis vaccine in order to gain access to the Pre-Advising Canvas Course, meet with an advisor and enroll in classes. You must also submit the Health History Form. Submit these forms at smu.edu/healthform. Do not delay!

2 **Start the Required Student Life Courses**

All new students must complete the Campus Life Modules and Online Prevention Courses before the start of the term. Go to orientation.smu.edu to get started on the Campus Life Modules, and look out for an email from Vector for the Online Prevention Courses!

3 **Complete the Pre-Advising Canvas Course (PACC)**

Learn about your SMU degree and prepare for advising and enrollment. You must complete the PACC prior to setting up an advising appointment to enroll in classes.

4 **Review *Peruna Passport***

Read *Peruna Passport* for important information about your first year at SMU.

5 **Submit Records of AP/IB and Dual Enrollment**

If applicable, confirm that a record of all dual enrollment and AP and/or IB work is sent to the SMU Registrar's Office.

6 **Consider Academic Areas of Interest**

Look at the online catalog at catalog.smu.edu and think about the academic fields of study that interest you most (see page 9). The Common Curriculum will also support your exploration.

7 **Take Placement Exams**

Take any SMU placement exams that will help you determine the particular language, Calculus or Chemistry course you will be ready to take in your first term (see information on page 6).

8 **Identify Possible First-Term Courses**

Think about the courses that you may want to take during your first term.

9 **Advising and Class Enrollment**

Meet with your advisor to plan your schedule and start enrolling in classes. Remember, you must submit proof of the Meningitis vaccine before you can begin your academic journey!



MUSTANG STARTUP

The first step of Orientation at SMU is Mustang StartUp. Before your first term, you will need to complete the following orientation components:

PRE-ADVISING CANVAS COURSE

The Pre-Advising Canvas Course (PACC) educates you on the structure and requirements of your degree and prepares you for your advising appointment. Topics of the course include:

- The SMU degree
- The Common Curriculum
- Important policies and procedures
- Building a schedule

In the PACC, you will be directed to clear your holds in the my.SMU Student Dashboard. Failure to clear your holds in a timely manner will delay your enrollment. Upon completing the PACC, you will be able to schedule an individual advising appointment with your advisor.

Don't delay! The sooner you complete the PACC, the sooner you can meet with your advisor and start enrolling in classes.

ADVISING APPOINTMENTS (STUDENTS ONLY)

This virtual appointment is a time for you to work one-on-one with your advisor and plan for your first term at SMU. This is also the opportunity for you to begin building a partnership with your advisor by expressing what motivates you, what you care about and what you want to accomplish and experience during college. The individual advising session is the first of many meetings you will have with your advisor in the terms to come.

ENROLLMENT

Your advisor will make sure you understand the enrollment process by helping you to enroll in a partial schedule. After you meet with your advisor, you will round out your schedule on your own on the my.SMU Student Dashboard. This will give you

the opportunity to practice using the enroll, drop and swap functions independently, and will teach you how to use the enrollment system for the rest of your time at SMU.

RED, BLUE & YOU! AND SMALL GROUPS

Red, Blue & YOU! is a virtual engagement series for parents and families of new Mustangs covering a variety of topics necessary to start the year off right. Small Groups are student-only virtual sessions designed to connect new students with Orientation Leaders and other new Mustangs.

CAMPUS LIFE MODULES

These virtual orientation modules introduce you to the SMU Academy, Spirit, People, Campus and Community. All new students are required to complete these modules at **orientation.smu.edu** before the start of the term.

REQUIRED ONLINE PREVENTION COURSES

Prior to enrolling in classes, all new incoming first-year and transfer undergraduate students are required to complete two Online Prevention Courses through SMU's partner vendor, Vector LMS. The two courses are "AlcoholEDU for College" and "Sexual Assault Prevention for Undergraduates." An email notice will be sent to students directly from Vector LMS. The email will contain the link and further instructions for each assigned course, **which will take about 2 to 2.5 hours in total to complete.** Periodic reminders will also be sent after the initial assignment notice until both courses are successfully completed. Students will also receive a notice and reminders from Vector LMS to complete a brief follow-up, usually about a month following completion of each required course.

⚠ Both the Campus Life Modules and Online Prevention Courses must be completed by August 1. Failure to complete these requirements by August 1 will result in the inability to make any changes to your fall schedule and will prevent further enrollment.

MUSTANG STARTUP TIMELINE



Prior to your advising meeting, you MUST:

- Activate and use your SMU student ID and password.
- Set up Duo Two-Factor Authentication using your personal cellphone. (Yours, not your parent's!)
- Provide proof of your Meningitis immunization at smu.edu/healthform.
- Clear your Student Rights and Responsibilities hold and complete the Personal Information Update.

Stay connected

As you get ready to start at SMU, it is important to:

- Check your SMU email account regularly.
- Write your SMU email address here:

- Know your SMU student ID number.
- Write your ID number here:



UNIVERSITY ADVISING CENTER

PRE-MAJOR ADVISING

The University Advising Center (UAC) guides pre-major students as they navigate the undergraduate curriculum and maximize their academic experience at SMU. The UAC advisors are knowledgeable about all majors at SMU and can help students recognize and pursue their passions; challenge students to set realistic and rewarding goals; and empower students to think and act independently.

Each student at SMU is assigned a pre-major advisor with whom they will work until they declare a major. Once you declare your major, you'll be assigned to a major advisor in your School of Record.

ADVISING AFTER MUSTANG STARTUP

Once you begin your studies at SMU, your advisor will be a valuable point of contact. Reasons to see your academic advisor include:

- Questions or concerns regarding your classes
- Questions regarding AP, IB, dual enrollment or other transfer credit
- Questions about academic policies and procedures
- Narrowing your options for majors and/or minors
- Choosing classes that help you achieve your degree requirements
- Degree planning based on your interests and goals
- Referrals to other campus resources
- Discussing how study abroad, engaged learning, pre-professional studies and student involvement fit into your plans



THE ADVISING PARTNERSHIP

Productive advising is built on a partnership between student and advisor. The spirit of an ideal advising partnership is mutual engagement, responsiveness and dedication. The advisors in the UAC strive to educate their advisees to be fully self-sufficient and responsible for their own academic decisions. Regular advising conversations – the fundamental building blocks of these partnerships – enable advisors to serve as a source of knowledge and referrals, allowing students to plan and prepare over the course of their years at SMU.

EXPECTATIONS OF YOUR ADVISOR

- Advise you on course selection and assist you in developing an academic plan that satisfies your degree requirements.
- Help you to explore the wide array of majors and minors at SMU.
- Clarify academic policies, programs and procedures.
- Be available to meet with you each term during regular office hours.
- Listen to your concerns and refer you to the appropriate support services, if needed.
- Assist you in making intentional academic decisions.
- Guide you as you explore your interests, abilities and passions as they relate to your academic and life goals.
- Introduce you to academic planning resources and teach you how to use them.

EXPECTATIONS OF YOU

- Familiarize yourself with the University policies, regulations, programs and procedures that apply to your path at SMU.
- Consult the Undergraduate Catalog, *Peruna Passport*, SMU department websites and relevant campus offices.
- Take initiative and contact your advisor in a timely manner.
- Prepare a list of class ideas, questions and concerns prior to each meeting.
- Draft a tentative schedule prior to the enrollment period.
- Observe academic deadlines.
- Keep your advisor informed about your academic progress, course selection and intellectual/career goals.
- Understand and adhere to the requirements of any scholarships/financial aid that you are receiving, and whether there are any stipulations in terms of choice of major, credits or grade point average.
- Keep track of your progress toward your degree.
- Plan ahead, ask questions and engage in the advising process.

UNDERGRAD MUST-DO LIST

FIRST YEAR

- Meet with your Pre-Major Advisor.
- Consider possible majors and minors.
- Start to develop an academic plan with your Pre-Major Advisor.
- Focus on academics while balancing school and social life.
- Understand your Degree Progress Report (my.smu.edu) and Undergraduate Catalog (catalog.smu.edu).
- Talk to a librarian about library resources.
- Seek workshops and tutoring at the A-LEC.
- Customize your A-LEC "Semester-At-A-Glance" calendar.
- Participate in PALs workshops and events.
- Attend an event hosted by an academic department.
- Go to a professor's office hours.
- Visit SMU Abroad and see what is possible.
- Visit Hegi Career Center for career counseling.
- Explore planning tools on my.SMU like Schedule Builder and Degree Planner.

SECOND YEAR

- Join a professional/academic student organization.
- Know your major and minor requirements.
- Declare your major(s) and minor(s).
- Introduce yourself to your Major Advisor.
- Create a long-term plan to visualize your SMU degree.
- Complete a professional shadowing program with Hegi Career Center.
- Speak with a faculty member who inspires you.
- Pursue undergraduate research or fellowships.



YOUR ACADEMIC PLAN

ACADEMIC PLANS

In order to earn a degree at SMU, all students must minimally fulfill the Common Curriculum (CC), complete a major and earn 120 credit hours. Some students also may pursue a second major, minor or a pre-professional program such as pre-health or prelaw.

The curriculum at SMU is designed in such a way that you may take classes that will satisfy both the requirements for your major and for the CC. There may be overlap in how your coursework and experiences will fulfill your degree requirements.

Required coursework for every area of study at SMU is listed in the Undergraduate Catalog at catalog.smu.edu and on the specific departmental websites. The diagram on page 16 is a Common Curriculum tracker that will help you plan and track the courses you take to satisfy CC requirements. The CC is described in full detail in the following section.

It can be helpful to create a long-term plan to visualize your time at SMU and how you will fulfill your degree requirements.

SMU IN FOUR

Start Smart. Finish Strong. SMU is committed to helping students make timely progress toward their degree and envision their path to graduation. Through student-support resources and advising tools like Schedule Builder and Degree Planner, students are empowered to plan and complete coursework and navigate challenges that may arise. If you'd like to learn more, visit smu.edu/smuinfour.

PLACEMENT EXAMS

SMU offers placement exams for world languages, mathematics and chemistry. These exams are accessible through canvas.smu.edu under the Pre-Advising Canvas Course.

World Languages

Placement exams are offered in most of the languages taught at SMU (Arabic, Chinese, French, German, Italian, Japanese, Latin, Russian and Spanish). Students should take the language placement exam if they are planning to continue learning a previously studied language at SMU. **Please take your language placement exam on Canvas prior to your advising appointment.**

Calculus

The Mathematics Department offers placement exams for students with some background in Calculus. **These exams are offered through Canvas, and should be taken before your advising appointment.**

Chemistry

Any student who is interested in a pre-health field, a science major or an engineering major will likely take Chemistry in their first term at SMU. To determine whether your correct placement is CHEM 1302: Preparatory Chemistry or CHEM 1303: General Chemistry, **take the placement exam on Canvas prior to your advising appointment.**

GET THE CREDIT YOU'VE EARNED

Students can use external credit (AP, IB, dual enrollment, transfer) to satisfy Common Curriculum (CC), major, minor or graduation requirements, as well as toward the 120 credit hours required for an SMU degree. Students admitted as first-year (FYR) and first-year transfer students (FYT) may satisfy up to three CC Breadths with any combination of external credit. Students admitted as transfer students (TRN) may fulfill up to seven CC Breadths using external credit. For more information on external credit policies, see the chart on page 17.

Approved AP and IB exams with appropriate scores may be used toward your SMU degree. You can assess your test scores using the charts on page 7 and 8. Your previous work will help to determine your placement level in, and possible exemption from, some courses at SMU.

You are responsible for knowing and reporting to SMU any external credit you have earned to prevent duplicate enrollment. Students may not receive credit for an AP exam, an IB exam and a college course covering the same subject matter; i.e., the course equivalency will only be awarded once.

Students may decline all or part of their external credit in favor of taking the equivalent credit at SMU. Students should discuss with their academic advisor when this may be applicable.

You must send an official copy of any test results and/or dual enrollment and transfer transcripts to the University Registrar's Office in order to receive credit. You should submit these as soon as possible to facilitate academic advising, and you must submit them no later than the end of your first term of enrollment.

Note: Students may need to fill out a petition to use dual enrollment credit for the Quantitative Reasoning (QR) Foundation.

External Credit Records

A record of all external credit must be sent to the SMU Registrar's Office. **If official documentation is not received by SMU, you will not receive credit.**

For more information, visit smu.edu/registrar or email registrar@smu.edu.

AP EXAM CREDIT CHART

AP Examination	Accepted Scores	# of Credits	Courses Credited	Common Curriculum Requirements Satisfied
*African American Studies	4 or 5	3	*TBA	* TBA
Art	4 or 5	3	ASDR 1300 or ASPH 1300 or ASPT 1300	Creativity and Aesthetics (CA) Breadth
Art History	4 or 5	6	ARHS 1303 and 1304	Historical Contexts (HC) Breadth
*Biology	* TBA	* TBA	* TBA	* TBA
Chemistry	5	4	CHEM 1303/1113	Exploring Science (ES) Breadth
Computer Science A	4 or 5	3	CS 1341	None
*Economics: Macro	* TBA	* TBA	* TBA	* TBA
*Economics: Micro	* TBA	* TBA	* TBA	* TBA
*English Lang/C or Lit/C	* TBA	* TBA	* TBA	* TBA
Environmental Science	4 or 5	3	GEOL 1315	Exploring Science (ES) Breadth
European History	4 or 5	6	HIST 20XX and 20YY	Historical Contexts (HC Breadth)
Human Geography	4 or 5	3	HUM 10XX	None
Math: Precalculus	4 or 5	3	MATH 1304	None
Math: Calculus AB	4 or 5	3	MATH 1337	Quantitative Reasoning (QR) Foundation
Math: Calculus BC	3 if AB subscore of 4	3	MATH 1337	Quantitative Reasoning (QR) Foundation
Math: Calculus BC	4 or 5	6	MATH 1337 and 1338	Quantitative Reasoning (QR) Foundation
Music Theory	4 or 5	3	* TBA	None
Physics 1	4 or 5	3	SCI 10XX	Exploring Science (ES) Breadth
Physics 2	4 or 5	3	SCI 10YY	Exploring Science (ES) Breadth
Physics C (Mech)	4 or 5	3	PHYS 1303	Quantitative Applications (QA) P&E; Exploring Science (ES) Breadth
Physics C (E&M)	4 or 5	3	PHYS 1304	Quantitative Applications (QA) P&E; Exploring Science (ES) Breadth
Psychology	4 or 5	3	PSYC 1300	Social and Behavioral Sciences (SBS) Breadth
Statistics	4 or 5	3	STAT 2331	Quantitative Reasoning (QR) Foundation
U.S. Govt: American	4 or 5	3	PLSC 1320	Social and Behavioral Sciences (SBS) Breadth and Civics and Individual Ethics (CIE) P&E
U.S. Govt: Comparative	4 or 5	3	PLSC 1340	Social and Behavioral Sciences (SBS) Breadth and Civics and Individual Ethics (CIE) P&E
U.S. History	4 or 5	6	HIST 20XX and 20YY	Historical Contexts (HC Breadth)
World History	4 or 5	3	HUM 10YY	Historical Contexts (HC Breadth)
Second Language				
Language: Chinese	4 or 5	8	CHIN 1401 and 1402	Second Language (SLR) Foundation
Language: French	4 or 5	8	FREN 1401 and 1402	Second Language (SLR) Foundation
Language: German	4 or 5	8	GERM 1401 and 1402	Second Language (SLR) Foundation
Language: Italian	4 or 5	8	ITAL 1401 and 1402	Second Language (SLR) Foundation
Language: Japanese	4 or 5	8	JAPN 1401 and 1402	Second Language (SLR) Foundation
Language: Latin	4 or 5	8	LATN 1401 and 1402	Second Language (SLR) Foundation
Language: Spanish	4 or 5	8	SPAN 1401 and 1402	Second Language (SLR) Foundation

***At the time of publication, some AP/IB exam credits were still under review. For the most up-to-date information, please visit the Credit by Examination page on the Registrar's Office website at smu.edu/registrar/apcredit.**

IB EXAM CREDIT CHART

IB HL Examination	Accepted Scores	# of Credits	Courses Credited	Common Curriculum Requirements Satisfied
*Biology	* TBA	* TBA	* TBA	* TBA
Chemistry	7	4	CHEM 1303/1113	Exploring Science (ES) Breadth
*Economics	* TBA	* TBA	* TBA	* TBA
Environmental Systems and Societies	5, 6, or 7	3	* TBA	Exploring Science (ES) Breadth
Geography	5, 6 or 7	3	HUM 10XX	Exploring Science (ES) Breadth
Film	5,6 or 7	3	FILM 10XX	None
History:				
Africa	5, 6 or 7	6	HIST 10XX and 10YY	Historical Contexts (HC) Breadth
Americas	5, 6 or 7	6	HIST 10XX and 10YY	Historical Contexts (HC) Breadth
Asia and Oceania	5, 6 or 7	6	HIST 10XX and 10YY	Historical Contexts (HC) Breadth
Europe and the Islamic World	5, 6 or 7	6	HIST 20XX and 20YY	Historical Contexts (HC) Breadth
Europe and the Middle East	5, 6 or 7	6	HIST 10XX and 10YY	Historical Contexts (HC) Breadth
Language A:				
English A Literature	5, 6 or 7	6	WRTR 10XX and 10YY	None
English Language and Literature	5, 6 or 7	6	WRTR 10XX and 10YY	None
All other languages	5, 6 or 7	8	(Language) 1401 and 1402	Second Language (SLR) Foundation
Language Ab Initio	5, 6 or 7	3	* TBA	None
Language B	5, 6 or 7	8	(Language) 1401 and 1402	Second Language (SLR) Foundation
English B	5, 6 or 7	6	LANG 10XX and 10YY	None
Mathematics: Applications and Interpretations	5, 6 or 7	6	MATH 1337 and STAT 2331	Quantitative Reasoning (QR) Foundation
Mathematics: Analysis and Approaches	5, 6 or 7	3	MATH 1337	Quantitative Reasoning (QR) Foundation
Music	5, 6, or 7	3	*TBA	None
Philosophy	5, 6, or 7	3	PHIL 1305	Philosophical, Religious and Ethical Inquiry (PREI) Breadth
Physics	5, 6 or 7	6	PHYS 1303 and 1304	Exploring Science (ES) Breadth
Psychology	5, 6 or 7	6	PSYC 1300 and 10XX	Social and Behavioral Sciences (SBS) Breadth
Social and Cultural Anthropology	5, 6 or 7	3	*TBA	None
World Religions	5, 6, or 7	3	RELI 1301	Philosophical, Religious and Ethical Inquiry (PREI) Breadth

Notes: – Students will be awarded credit only for Higher-Level IB Exams. Standard-Level IB Exams will NOT be awarded credit. Students may be awarded a maximum of 32 IB credits.

- No more than three AP/IB or other test credits can be used to satisfy Breadth requirements.
- Duplicate credit is not allowed toward an SMU degree. Students who enroll in classes that duplicate Advanced Placement, International Baccalaureate or other test credit awards will lose these credits after the fifth day of the term. Once credit is revoked, it will not be awarded again.
- An official copy of test results must be sent directly from the testing agency to the SMU Registrar's Office for a student to receive credit. Students should submit their official scores as soon as possible to facilitate academic advising and must submit no later than the end of their first term of enrollment.
- For the most up-to-date information on exam credits, please visit the Credit by Examination page on the Registrar's Office website at smu.edu/registrar/apcredit.

***At the time of publication, some AP/IB exam credits were still under review. For the most up-to-date information, please visit the Credit by Examination page on the Registrar's Office website at smu.edu/registrar/apcredit.**

CHOOSING YOUR MAJOR

SMU AREAS OF STUDY

SMU offers more than 100 undergraduate majors and 80 minors across five nationally ranked undergraduate schools.

COX SCHOOL OF BUSINESS

Accounting
Business Analytics and Supply Chain Management
Energy Management (specialization only)
Entrepreneurship (specialization only)
Finance
General Business
Management
Marketing
Real Estate (major and specialization)

DEDMAN COLLEGE OF HUMANITIES AND SCIENCES

Africa/Middle East Studies (minor only)
African/African-American Studies
Anthropology
Arabic (minor only)
Archaeology (minor only)
Asian Studies (minor only)
Biochemistry
Biological Sciences
Biophysical Sciences
Chemistry
Chinese (minor only)
Classical Studies (minor only)
Cognitive Science (minor only)
Cultural Anthropology (minor only)
Data Science (must be taken as second major)
Earth Sciences (concentrations: Environmental Resource Sciences, Environmental Studies, Geology, Geophysics, or Self-Designated)
Economics
Economics with Finance Applications Specialization
Economics with Management Information Applications Concentration
English
English with Creative Writing Specialization
Environmental Anthropology (minor only)
Ethics (minor only)
European Studies (minor only)
French
French Studies
Health and Society
Health Sciences (minor only)
History
Human Rights
Individualized Studies in Liberal Arts
Individualized Studies in the Liberal Arts (with a focus on Women's and Gender Studies)
International Studies
Italian (minor only)
Italian Area Studies (minor only)
Japanese (minor only)
Jewish Studies (minor only)
Latin (minor only)
Latin American and Iberian Studies (minor only)
Law and Legal Reasoning (minor only)
Markets and Culture
Mathematics
Medieval Studies
Mexican-American Studies
Neuroscience (minor only)
Philosophy
Physics
Political Science
Psychology
Public Policy
Religious Studies
Russian Area Studies (minor only)
Sociology

Spanish
Statistical Science
Tower Scholars Minor in Public Policy and International Affairs
Women's and Gender Studies (minor only)
World Languages: Chinese
World Languages: French
World Languages: German
World Languages: Italian
World Languages: Spanish

LYLE SCHOOL OF ENGINEERING

Civil Engineering
Computer Science
Electrical and Computer Engineering
Environmental Engineering
Management Science
Mechanical Engineering
**Some engineering majors may include specializations or tracks. Please see Undergraduate Catalog for details.*

MEADOWS SCHOOL OF THE ARTS

Advertising
Art
Art History
Corporate Communication and Public Affairs
Church Music (minor only)
Creative Computing
Dance
Fashion Media
Film and Media Arts
Graphic Design (minor only)
Journalism
Music
Music Composition
Music Education with Texas Teacher Certification
Music Industry Practices (minor only)
Music Performance
Music Therapy
Nonprofit and Arts Leadership (minor only)
Photography (minor only)
Public Relations and Strategic Communication
Songwriting (minor only)
Theatre
Writing Across the Arts (minor only)

ANNETTE CALDWELL SIMMONS SCHOOL OF EDUCATION AND HUMAN DEVELOPMENT

Applied Physiology and Health Management
Sport Management
Sport Performance Leadership
Educational Studies (must be taken as second major)
Subplans: Focus 4-8
Focus 7-12
Focus Ec-6
Focus K-12

Planning for Your Major

As you decide which primary area of study is the best fit for you, your pre-major advisor will guide you through officially declaring your major. Note that some double majors are not possible in four years and some majors have admission requirements that must be met prior to declaration. Make sure to visit catalog.smu.edu for detailed information about the majors and minors at SMU.

PLAN YOUR FIRST-TERM SCHEDULE

Now that you've reflected on your majors and minors of interest, it's time to think about what courses you will take once you are here. Your degree will include classes for the Common Curriculum, your major and your electives. Some students choose to use their elective classes toward a second major, minor or pre-professional program. Your first-term schedule will most likely include a balance of classes toward these requirements.

Students typically enroll in 15 to 16 credit hours per term. The rigor of the coursework and the number of courses required to meet specific academic goals are topics discussed in advising meetings.

EXPLORATORY COURSES

Most students start college with an idea of what subject areas interest them. Your first term at SMU is the perfect time to explore a potential major or minor or simply to take a course that sounds interesting. Your advisor will help you double check that the course is at an appropriate level, but, beyond that, we encourage you to explore the amazing academic possibilities at SMU. You are in college – enjoy!



SAMPLE FIRST-TERM SCHEDULES

UNDECIDED

Introduction to Academic Writing	3 hours
Quantitative Reasoning Foundation	3 hours
Second Language	4 hours
Explore Area of Interest	3 hours
Explore Area of Interest/CC Breadth	3 hours

Total hours 15-18 hours

PRE-HEALTH

Introduction to Academic Writing	3 hours
Precalculus/Calculus	3 hours
Chemistry with Lab	4 hours
Biology with Lab	4 hours
Explore Area of Interest/CC Breadth	3 hours

Total hours 15-18 hours

BUSINESS DIRECT/BBA SCHOLAR

Introduction to Academic Writing	3 hours
Precalculus/Calculus	3 hours
Management/Marketing	3 hours
BLI 1110/BLI 1210	1-2 hours
Microeconomics	3 hours

Total hours 15-18 hours

ADVERTISING

Introduction to Academic Writing	3 hours
Quantitative Reasoning Foundation	3 hours
Second Language	4 hours
Survey of Advertising	3 hours
Explore Area of Interest/CC Breadth	3 hours

Total hours 15-18 hours

MECHANICAL ENGINEERING

Introduction to Academic Writing	3 hours
Calculus	3 hours
Physics with Lab	4 hours
Introduction to Mechanical Engineering	3 hours
CC Breadth	3 hours

Total hours 16-17 hours

PSYCHOLOGY

Introduction to Academic Writing	3 hours
Introduction to Statistical Methods	3 hours
Second Language	4 hours
Introduction to Psychology	3 hours
Explore Area of Interest/CC Breadth	3 hours

Total hours 15-18 hours



THE COMMON CURRICULUM

GENERAL EDUCATION: THE COMMON CURRICULUM

The SMU Common Curriculum (CC) is a general education framework that prepares students to be lifelong learners in a rapidly changing, interconnected world. The CC is the 21st-century reboot of the classical university education, challenging students to know the past, understand the present and build the future.

The Common Curriculum is made up of Foundation requirements and Breadth requirements. Foundation requirements ensure all students have the building blocks of a balanced university education, including solid writing and reasoning skills. Breadth requirements frame the problems of the world through diverse intellectual frameworks, allowing students to understand the origins and evolutions of issues we face, as well as possible solutions. SMU also requires the Proficiency and Experience (P&E) graduation requirements (see page 15). You can learn more about the CC at smu.edu/cc.

THE CC: AN EDUCATION FOR LIFE

- A comprehensive liberal arts education that exposes students to multiple ways to frame knowledge and solve problems.
- Foundation courses make sure all students are ready for a university education.
- Coursework develops students' critical thinking abilities in multiple domains.
- Breadth courses introduce students to all major subjects/disciplines at the University.
- Grounding in Humanities, Arts, Social Sciences and STEM gives students the interdisciplinary formation to become problem solvers and life-long learners.

FOUNDATION REQUIREMENTS

ACADEMIC WRITING (AW) AND CRITICAL REASONING (CR)

The foundational Academic Writing (AW) and Critical Reasoning (CR) sequence introduces you to academic thought and communication in small classes that encourage you to work closely with faculty. These seminars share the goal of helping you develop competency in expository, analytical and persuasive writing in response to texts of escalating complexity.

All courses are preparatory for learning the skills of academic writing at the University. These small seminar classes involve much reading, analytical writing, discussion and application of critical reasoning in response to texts and issues on a variety of subjects. These courses will teach you how to competently read, write and think critically at the college level.

When do I take these courses?

All incoming first-year students will satisfy the AW and CR requirement by taking Academic Writing in their first term at SMU and Critical Reasoning in their second term, regardless of any prior coursework or test credits.

What writing courses will I take?

The AW and CR requirement consists of two or three writing-intensive and critical reasoning courses. Students will be required to complete one of the following sequences:

WRTR 1311, 1312, 1313 (or equivalent)	Students with an SAT-R ERW score lower than 580 or ACT score lower than 21 will take this sequence.
WRTR 1312, 1313 (or equivalent)	Students with an SAT-R ERW score of 580 or higher or ACT score of 21 or higher will take this sequence.
WRTR 2303, 2304	Hilltop Scholars students will take this sequence.
WRTR 2305, 2306	University Honors students will take this sequence.

Are there any special rules or requirements relating to Common Curriculum writing courses?

Regardless of which sequence you are in, the following policies apply:

No first-year student, regardless of prior coursework or test scores, will place out of the AW and CR sequence.

Transfer students (students with 24 or more post-high school transfer credits) with test credit for writing AND transfer credit for the first term of college writing (WRTR 10XX) must take WRTR 1313 (or equivalent). Transfer students with test credit for writing and transfer credit for the second term of college writing (WRTR 10YY) have satisfied the Foundation requirement in writing. For more information on external credit policies, see the chart on page 17.

You must enroll in the appropriate writing course each term until you have met your Academic Writing (AW) and Critical Reasoning (CR) obligations.

WRTR 1312, 2303 and 2305 are atypical in that they cannot be dropped no matter what grade students are earning in these courses. You should plan to put in your best effort from the beginning, and meet with your instructor early and often if you are not meeting your course goals.

You cannot delay taking your prescribed sequence. Students are required to complete AW/CR in their first year.

You must earn a grade of C- or better in Academic Writing in order to continue on to the next course in your sequence. If you earn below a C- in an AW course, you must take the same course again the next term. You must earn a grade of D- or better to satisfy the Critical Reasoning requirement. Attendance is required. Absences will result in a lower or failing grade.

QUANTITATIVE REASONING (QR)

The contemporary world is extremely data driven. Quantitative Reasoning courses give students the basic tools of mathematical and/or statistical analysis and the concepts and tools to be able to gather, sort and interpret information. A strong foundation in quantitative analysis allows students to use information to understand problems ranging from which mortgage loan option is the most cost effective to the implications of a trillion-dollar federal budget deficit.

Courses at SMU that Satisfy the QR Foundation

- MATH 1307: Introduction to Mathematical Sciences
- MATH 1309: Business Calculus
- MATH 1337: Calculus I
- STAT 2331: Introduction to Statistical Methods

Note: Precalculus courses MATH 1303: Precalculus for Business and MATH 1304: Precalculus do not satisfy the Quantitative Reasoning Foundation.

Other Ways to Satisfy the QR Foundation

You may satisfy this requirement by bringing in AP/IB scores equivalent to an introductory course in Mathematics or Statistics. Dual, concurrent, or transfer credit with direct equivalencies may also be used.

Which Quantitative Reasoning Foundation should you take?

The following section helps you determine what Quantitative Reasoning course may be required for your intended area of study. Consult with your advisor regarding the appropriate course selection and term of enrollment.

- The **Business** and **Economics** majors both require STAT 2331: Intro to Statistical Methods and MATH 1309: Business Calculus or MATH 1337: Calculus I.
- The **Data Science** second-major requires MATH 1337: Calculus I.
- The **Biological Sciences, Chemistry, Earth Sciences, Mathematics, Physics, and Engineering** majors each require MATH 1337: Calculus I.
- The **Statistics** major and the **Pre-Health/Pre-Med** track both require STAT 2331: Intro to Statistical Methods and MATH 1337: Calculus I.
- The **Psychology, Corporate Communication and Public Affairs, and Applied Physiology and Health Management and Sport Management** majors each require STAT 2331: Intro to Statistical Methods.

Students not pursuing any of the above areas of study may fulfill the Quantitative Reasoning requirement by taking MATH 1307: Introduction to Mathematical Sciences.

Calculus Placement Exams

The Mathematics Department requires placement exams for students who wish to enroll in either MATH 1309: Business Calculus or MATH 1337: Calculus I. These are non-credit exams that are designed to ensure students are placed into a course where they can be successful. Students must pass the appropriate placement exam to enroll in either MATH 1309: Business Calculus or MATH 1337: Calculus I. The only students who may enroll in MATH 1309: Business Calculus or MATH 1337: Calculus I without taking the placement exam are those who have credit for Precalculus or Calculus on their SMU transcript.

Students are allowed to take the placement exam for each Calculus Course (MATH 1309 and MATH 1337) a maximum of two times, for a total of four attempts. After four failed attempts, students must enroll in Precalculus.

Note: Students who wish to enroll in MATH 1303: Precalculus for Business, MATH 1304: Precalculus, or MATH 1307: Introduction to Mathematical Sciences do not need to take the Calculus Placement Exam.

When do I take it?

You are strongly encouraged to complete your Quantitative Reasoning requirement during your first year at SMU.

Can I test out?

Yes. You may satisfy this requirement by bringing in test credit equivalent to an introductory course in Mathematics or Statistics. Dual-credit may be used; however, you may need to petition via the Office of General Education.

Credit Exams

If you did very well in an honors-level or college-level Calculus class in high school, but you were for some reason unable to take an AP/IB exam, you may take an appropriate credit exam for MATH 1309: Business Calculus, MATH 1337: Calculus I or MATH 1338: Calculus II. Credit exams must be taken in-person in the Math department during move-in week before either the Fall or Spring semester. You should contact the Math department over the summer or winter to schedule such an exam. If you pass the credit exam (which is approximately as difficult as an AP exam), you will receive the relevant SMU credits.



SECOND LANGUAGE (SLR)

SMU students fulfill the Second Language Foundation Requirement by demonstrating proficiency in reading, writing, speaking and understanding a second language at the Intermediate level, equal to the first-year's study of language at a university level. SMU offers American Sign Language, Arabic, Chinese, Classical Greek, French, German, Italian, Japanese, Latin, Russian and Spanish.

Prior to Matriculation

Students can fulfill the Second Language Foundation Requirement in one of the following ways:

1. Presenting an appropriate score on a recognized second language proficiency test (4 or 5 on AP exam; 5, 6 or 7 on IB HL exam.)
2. Demonstrating an existing proficiency in a language other than English as documented by matriculation as an International Student from a non-English-dominant country AND providing transcripts from a non-English-medium high school.

While first-year students may receive credit for dual and transfer credit earned prior to matriculation at SMU, such external credit will only satisfy the Second Language Requirement under the following conditions:

- Dual credit must be earned at the 2401 level (or higher).
- Post-high school transfer credit must be earned at the 1402 level (or higher).

For Transfer (TRN) students only, two consecutive terms for a minimum of 6 credit hours of the same language taken post-high school (regardless of the transfer equivalency) will satisfy the requirement.

After Matriculation

Students can fulfill the Second Language Foundation Requirement in one of the following ways:

1. Placing into and successfully completing a course in the 1402 (or higher) level. Students who complete such a course with a grade of C- or higher may also earn between 4 and 16 hours of retroactive credit, depending on the level placed into and the language of study.
2. Starting a new language and successfully completing the 1401 and 1402 levels.
3. Placing into the fourth term (or higher) on an SMU World Languages placement exam and then earning an appropriate score on the proficiency test. (A nonrefundable registration fee for the proficiency test is required, and it is recommended that students take this within one year of their matriculation at SMU.)
4. Achieving a test score of Intermediate-Mid or higher on the ACTFL OPI in a language not taught at SMU.
5. Taking two approved substitution courses, if such accommodation is recommended by the Office of Disability Accommodations and Success Strategies (DASS).

Did you earn a 4 or 5 on an AP Second Language exam or a 5, 6 or 7 on an IB HL Second Language exam? You will receive 8 hours of test credit in the form of 1401 and 1402.

Do you want to continue studying the language? This is a great way to satisfy additional CC requirements. But keep in mind that you must still take the placement exam, as this will ensure accurate placement. (Retroactive credit can be awarded for any intermediate-level courses you place out of.)

WORLD LANGUAGES PATHWAYS

Language Study Opens Doors in a Variety of Fields

SMU offers many opportunities to study a second language. Second-language learning promotes communication skills and fosters cross-cultural understanding. By learning a second language, you will be able to participate in multi-cultural communities, adapt to different career opportunities and respond to the challenges of a changing world. Find out more about how far your second language can take you at smu.edu/wllwhystudyhere.

Learning a language can help you in many career paths:

Media, Arts & Communication

Performing Arts
Journalism
Fashion Media
Public Relations
Digital Marketing
Arts Management
Advertising

Business & International Affairs

Consulting
Investment Banking
Law Diplomacy
Human Resources
Business Management
International Marketing
Sport Management

STEM & Technology

Pharmaceuticals
Medicine
Cyber-security
Engineering
Computer Systems Management
Energy Management
Environmental Management

If you have questions about the right language for you, reach out to the Second Language Advisor at slr@smu.edu.

BREADTH REQUIREMENTS

Breadth courses introduce students to discipline-based ways of thinking. Students are required to complete seven Breadth courses, each of which are at least 3 credit hours.

Creativity and Aesthetics (CA)

Art is a form of creative expression that has the capacity to move its creators and audiences emotionally and intellectually: it can delight, entertain, empower, instruct, challenge or provoke. Art can expand our understanding of ourselves and others across place and time; foster collaboration and communal experience; and encourage nuanced thinking. The creation and analysis of art can offer insight into this power, spur original thinking and promote a broader understanding of cultures past and present.

Exploring Science (ES)

Scientific inquiry is a systematic process of exploring the natural world through a hypothesis-driven collection and analysis of evidence. Many of the issues of the modern world rely on effective understanding and critical interpretation of scientific subject matter. Exploring Science courses are designed to produce scientifically literate individuals who understand that scientific methods can be leveraged for effective decision-making in a number of domains.

All Exploring Science courses require a lab component. This component may be embedded in the course, or you may sign up for it separately.

Historical Contexts (HC)

Historical thinking allows students to analyze data from the past; recognize patterns of cause and effect; and understand the relationship between past and present. Moreover, because there are multiple ways of interpreting historical data and sources, historical thinking builds an appreciation of diverse viewpoints on any given topic. It also teaches students to evaluate arguments and critically assess sources of information.

Literary Analysis and Interpretation (LAI)

Literary analysis and its interpretation are essential skills in understanding the nuance of the texts all around us. These texts may be literature, film, music, art and/or TV reports, news, shows, posters, social media threads and the like. All these texts convey meaning rooted in culture and history. Furthermore, texts move the world: they change laws, start revolutions, decry injustice and admire beauty. Consequently, the analysis of texts cultivates inclusive communities and critical thinking skills, building a knowledge of culture, history, society and politics.

Philosophical, Religious and Ethical Inquiry (PREI)

The fields of philosophical, religious and ethical inquiry provides students with the tools to understand and evaluate philosophical, religious and ethical claims; to ask pointed questions about the world; and to discover the philosophical, religious and/or ethical convictions that inform diverse peoples and traditions. Beyond this, these fields build students' analytical and communication skills and foster an ability to engage in respectful dialogue.

Social and Behavioral Sciences (SBS)

Almost every challenge humankind has ever faced, or will ever face, depends on the actions of people. Exploring how people think and behave is fundamental to understanding our past, present and future. The social and behavioral sciences provide students with the knowledge, methods and tools to better understand individuals and societies.

Technological Advances and Society (TAS)

Technological changes have driven societal change since ancient times. These changes continue to accelerate in the contemporary world, creating both opportunities and challenges. Technological Advances and Society courses explore how the dynamics of technological advancements impact society on almost every level and in all areas of our lives. The classes provide students the necessary background to describe, analyze and evaluate the effects of these technological changes in both narrow and broad contexts.

A second Exploring Science course of at least 3 credit hours can be used to satisfy the Technological Advances and Society Breadth.

When do I take my Breadth courses?

Any time between your first term and your last term.

Can I test out of Breadth courses?

Four out of your seven Breadth requirements must be taken at SMU, but you can use external credit to satisfy up to three Breadth requirements. *Note: Transfer students should refer to the CC transfer policies on page 17.*

Do Breadth courses satisfy any other requirements?

Yes. Many Breadth courses also satisfy Proficiencies & Experiences and count toward work in majors and minors.



GRADUATION REQUIREMENTS: PROFICIENCIES AND EXPERIENCES

Proficiencies and Experiences (P&Es) give students the skills they need to succeed in the workplace and the tools they need to work with increasingly diverse colleagues and audiences. All components push students beyond the boundaries of the traditional classroom, encouraging them to apply their learning in the community and the wider world.

PREPARATION FOR THE WORKPLACE

- Prepares students to work in a globalized society with people from all backgrounds and nations.
- Encourages students to think beyond the classroom and engage with the world.
- Provides students solid training and practice in written and oral communication.
- Develops students' critical thinking and problem-solving abilities in multiple domains.
- Provides an understanding of data analysis, technological competence and ethics.

Students can satisfy Proficiencies and Experiences through credit-bearing coursework or through noncredit activities that have been identified as meeting the Student Learning Outcomes (SLOs). Post-matriculation, dual enrollment and transfer credit also can satisfy Proficiencies and Experiences. If needed, students can submit a petition through the Office of General Education. Visit smu.edu/petitions for more information about petitioning credit.

Community Engagement (CE)

Community Engagement encompasses actions wherein individuals participate in activities that fulfill a community need; it prepares students for their public lives as citizens, members of communities and professionals in society. Through Community Engagement, students gain experience participating in multiple types of civic action and skills, and they are given the opportunity to integrate their academic learning with direct action and involvement. In this way, students develop collaborative skills and enhanced perspectives that will serve them throughout their lives.

Students can fulfill this proficiency through Engage Dallas in their Residential Commons, Mustang Heroes or Alternative Breaks.

Civics and Individual Ethics (CIE)

Moral judgments confront us everywhere. Ethical reasoning provides students foundational skills to reflect rigorously on ethical issues and to thoughtfully engage in civic and individual life. It allows students to identify their own ethical convictions, think self-critically about them and reflect on their merits.

Students can fulfill Civics & Individual Ethics through preapproved activities such as Engage Dallas and Mustang Pep Talks.

Global Perspectives (GPS)

Global learning gives students an ability to analyze and explore complex global challenges, collaborate respectfully with diverse others and take responsible action in contemporary global contexts. Global learning enhances students' sense of identity, community and perspective. Global learning expands knowledge of human and natural systems; privilege and stratification; and sustainability and development that help students gain a better understanding of cultures other than their own and cultivate their important roles as global citizens.

Students can fulfill Global Perspectives through all SMU Abroad programs.

Human Diversity (HD)

Understanding human diversity gives students the ability to navigate and appreciate the realities of diverse communities and nations that exist in a multifaceted world. Cultivating this understanding requires knowledge of a variety of cultures, subcultures and social systems in local, regional, national and global contexts. Courses in Human Diversity help students to understand the factors that contribute to individual identity as well as the environmental and historical circumstances in which social and cultural systems are produced. Finally, an understanding of human diversity provides students with insights into the ways in which inequalities are enacted and upheld.

Students have successfully petitioned individual activities such as Military Service, volunteering in social-service clinics and institutional field visits to fulfill this proficiency.

Oral Communication (OC)

Oral Communication consists of both extemporaneous and prepared communication, and it is intended to increase knowledge, to foster understanding or to promote change in the listeners' attitudes, values, beliefs or behaviors. Oral communication is fundamental to individual, professional and social growth. It enables the free expression and exchange of ideas, allowing individuals, organizations and communities to understand and learn from one another. Oral communication empowers individuals to become "upstanders," rather than bystanders – people who are confident, neither silent nor afraid to speak at critical individual, professional and social junctures.

Students can fulfill Oral Communication through preapproved activities such as Mustang Pep Talks and Peer Academic Leaders.

Quantitative Applications (QA)

Quantitative Applications courses provide students the ability to use and apply the tools of mathematical and/or statistical analysis to a wide range of subject areas. Students in these courses use information to solve problems in disciplines ranging from the Sciences and Business to the Social Sciences and Humanities. These courses promote numeracy and data literacy as skills that enhance the understanding of any topic or subject. Quantitative Applications courses reinforce the quantitative skills developed in the Quantitative Reasoning Foundation.

Students have successfully petitioned individual activities such as being a research assistant for a mathematics journal to fulfill Quantitative Analysis.

Writing (W)

Being able to write well is the mark of an educated person. But writing well is a skill that takes time to develop and requires practice. Writing courses emphasize university-level writing as an activity central to both academic and professional success. They promote writing as an activity that clarifies and enhances students' understanding of any topic or subject. Writing courses give students further opportunities to practice what they have learned in the first-year AW and CR sequence (WRTR 1312 and 1313 or equivalent) and to advance their skills.

Students have successfully petitioned individual activities such as a content creation internship or being published in an academic journal to fulfill this proficiency.

COMMON CURRICULUM (CC) REQUIREMENT TRACKER

This CC Requirement Tracker provides a visual overview of all the CC components. Use this page to record the different CC requirements that you can fulfill as you explore classes and experiences in your areas of interest.

GENERAL EDUCATION: FOUNDATIONS AND BREADTHS		
FOUNDATIONS		
AW – Academic Writing	3 credit hours	
CR – Critical Reasoning	3 credit hours	
QR – Quantitative Reasoning	3 credit hours	Can be fulfilled with external credit
SLR – Second Language	0–8 credit hours	Can be fulfilled with external credit
BREADTHS		May Satisfy Up to 3 with external credit
CA – Creativity and Aesthetics	3 credit hours	
ES – Exploring Science	3–4 credit hours	
HC – Historical Contexts	3 credit hours	
LAI – Literary Analysis and Interpretation	3 credit hours	
PREI – Philosophical, Religious and Ethical Inquiry	3 credit hours	
SBS – Social and Behavioral Sciences	3 credit hours	
TAS – Technological Advances and Society*	3–4 credit hours	
GRAND TOTAL	30-38	
GRADUATION REQUIREMENTS: PROFICIENCIES AND EXPERIENCES		
CE – Community Engagement		Course or Experience
CIE – Civics and Individual Ethics		Course or Experience
GPS – Global Perspectives		Course or Experience
HD – Human Diversity		Course or Experience
OC – Oral Communication		Course or Experience
QA – Quantitative Applications		Course or Experience
W – Writing		Course or Experience

*The TAS breadth can also be fulfilled with a second ES class.

COMMON CURRICULUM (CC) EXTERNAL CREDIT POLICIES

The table below shows which external credit can be used for various Common Curriculum requirements.

REQUIREMENTS	First-Years (FYRs) and First-Year Transfers (FYT)	Transfers (TRNs): Students with 24+ hours of post-high school transfer credit
FOUNDATIONS: Foundations ensure students have strong academic fundamentals.		
Academic Writing (AW) and Critical Reasoning (CR)	Students with an SAT-R ERW score of 580 or lower or ACT score of 20 or lower will take WRTR 1311, WRTR 1312 and WRTR 1313 (or equivalent).	Satisfied if student transfers in WRTR 10XX AND WRTR 10YY; completed as transfer credit.
	Students with an SAT-R ERW score of 580 or higher or ACT score of 21 or higher will take WRTR 1312 and WRTR 1313 (or equivalent).	If dual, concurrent or transfer credit is received for WRTR 10XX OR WRTR 10YY, student must take WRTR 1313 (or equivalent).
	Hilltop Scholars students will take WRTR 2303 and WRTR 2304.	If WRTR 10XX and WRTR 10YY were both dual/concurrent or test credit, students must take WRTR 1313 (or equivalent).
	University Honors Program (UHP) students will take WRTR 2305 and WRTR 2306.	Satisfied if WRTR 10XX is dual/concurrent credit or test credit awarded by a transferring institution AND WRTR 10YY is transfer credit.
Quantitative Reasoning (QR)	Can be satisfied with external credit; dual, concurrent or transfer credit may need to be petitioned.	
Second Language (SLR)	Can be satisfied using AP or IB credit (with an appropriate score).	Can be satisfied using AP or IB credit (with an appropriate score).
	Can be satisfied by transcript confirming high school study was instructed in a language other than English.	Can be satisfied by transcript confirming high school study was instructed in a language other than English.
	Can be satisfied by transferring a dual credit course equivalent to a 3rd-semester (2401) or a higher-level course at SMU.	Can be satisfied by transferring a dual credit course equivalent to a 3rd-semester (2401) or a higher-level course at SMU.
	Can be satisfied with post-high school transfer credit equivalent to one of SMU's 2nd-semester language courses (e.g., 1402).	Can be satisfied with post-high school transfer credit equivalent to one of SMU's 2nd-semester language courses (e.g., 1402).
	Can be satisfied by an appropriate score on an SMU-administered OPI or ASLPI test.	Can be satisfied by an appropriate score on an SMU-administered OPI or ASLPI test.
		Can be satisfied by transferring two consecutive semesters for a minimum of 6 credit hours of the same language taken post-high school (regardless of the transfer equivalency).
BREADTHS: Breadths introduce students to a range of academic disciplines.		
1. Creativity & Aesthetics (CA) 2. Exploring Science (ES) 3. Historical Contexts (HC) 4. Literary Analysis & Interpretation (LAI) 5. Philosophical, Religious, & Ethical Inquiry (PREI) 6. Social & Behavioral Sciences (SBS) 7. Technological Advances & Society (TAS)	Up to three Breadths may be satisfied by external credit; four must be from SMU credit.	All seven Breadths can be satisfied by external credit.
PROFICIENCIES & EXPERIENCES: Proficiencies & Experiences develop key skills through coursework or experiences.		
1. Civics & Individual Ethics (CIE) 2. Community Engagement (CE) 3. Global Perspectives (GPS) 4. Human Diversity (HD) 5. Oral Communication (OC) 6. Quantitative Applications (QA) 7. Writing (W)	Can be satisfied by external credit or post-high school activities. All experiences and some dual or transfer credit must be petitioned.	Can be satisfied by external credit or post-high school activities. All experiences and some dual or transfer credit must be petitioned.

Notes: – External credit is defined as test, dual, concurrent or transfer credit.

– Transfer credit is college credit completed after high school graduation but before matriculation to SMU. This does not include dual or concurrent credit.

– Dual/concurrent credits are course credits completed prior to high school graduation. Dual credit is work completed through a college (which could be taken at the college or at the high school) that counts for college credit and high school graduation requirements. Concurrent credit is work completed through a college that the high school does not give credit for graduation purposes.



TRANSFER STUDENTS

Dear Mustang,

Congratulations on your transfer to SMU! You already have proven that you can succeed in college based on your successful admission. No matter why you transferred or how happy you are to be here, you will face a period of adjustment.

SMU's Transfer & Veterans Services Center, located in suite 100 in the Laura Lee Blanton Student Services Building, is here to help. Our staff are ready to assist you with questions about your transfer credits, the CC and setting up your VA education benefits. If you are a pre-major, your academic advisors are located in the center for your convenience.

We know you are not new to college, but you are new to SMU. Every university has its own way of providing services to its students. Ask questions. Become involved on campus by joining one or two student organizations. With a little effort, you soon will be a seasoned Mustang!

Pony Up!

Steven Morales

Associate Registrar for Transfer & Student Services

- Be sure that transcripts for ALL of your previous coursework are sent electronically or mailed to SMU Office of Undergraduate Admission, PO Box 750181, Dallas TX 75275-0181, transfer@smu.edu.
- Be sure to send any AP and/or Higher Level IB examination scores to SMU's Registrar before your advising appointment. See page 7 and 8 for a table of accepted AP/IB scores.
- Collect your course syllabi and descriptions in case you decide to request any coursework be reevaluated.

GET THE TRANSFER CREDIT YOU'VE EARNED

Once your transcripts are received by SMU, your coursework is evaluated. You will be able to see if, and how, each of your courses will transfer into SMU through your Transfer Evaluation Report. You should review the report carefully. Courses from other schools sometimes do not fit perfectly into the course offerings and/or requirements at SMU. If you find any courses you believe should have an SMU equivalency or could apply to the CC, you may request to have the coursework reevaluated. Go to smu.edu/petitions for a re-evaluation petition. You will need your course syllabus for each course you wish to petition.

PREPARE FOR ADVISING

All students must complete the Pre-Advising Canvas Course (PACC) before meeting with an advisor. After completing the PACC, you will set up an appointment with an advisor from the University Advising Center or from the school of your chosen major. During this session, your advisor will help you understand your incoming transferable credits and how they may be applicable to your chosen major and the CC. Review your Transfer Evaluation Report and ensure you understand how your credits transfer to SMU.

Below are simple steps to assist you in preparing for your advising appointment. The better prepared you are, the more helpful your appointment will be!

- Submit proof of the Meningitis vaccine in order to access the Pre-Advising Canvas Course, meet with an advisor and enroll in classes. Submit the required health forms at smu.edu/healthform.
- Complete the Campus Life Modules and Online Prevention Courses. Go to orientation.smu.edu and look out for an email from Vector to get started.
- Submit your Statement of Good Standing Form(s) from each college attended to SMU's Office of Undergraduate Transfer Admission, transfer@smu.edu.
- Check the requirements for your chosen major in the Undergraduate Catalog (from your year of entry) online at catalog.smu.edu.
- Familiarize yourself with SMU's degree requirements for the CC.
- Identify possible courses (from the CC, your chosen major or other areas of interest) that you plan to take in your first term.

TRANSFER SHOCK

It is common for new transfer students to experience a phenomenon called "transfer shock," especially during their first term at their new university. During this time, it is normal for transfer students to feel a little lost or overwhelmed, and a temporary drop in grades can result. You are not alone. Fortunately, SMU has a support system in place for its transfer students. From the Transfer & Veteran Services Center to academic advisors, Division of Student Affairs professionals and the staff of the Altshuler Learning Enhancement Center, we all serve as resources to help you navigate through the transition to SMU and encourage you to not lose sight of your vision and goals. GPA recovery and a sense of belonging are common after a term or two.



WAYS TO COMBAT TRANSFER SHOCK

- Participate in orientation activities, including Stampede.
 - It's not just for first-year students. Register for Stampede at smu.edu/newstudent. It's a good way to meet new people and feel more connected to campus.
- Get involved on campus.
 - Follow Mustang Transfers on Instagram @smumto.
 - Attend student events. Look for the Friday Update email from Student Affairs every week for the latest event information.
 - Join a student organization through Student Involvement and Social Change and Intercultural Engagement.
- Be prepared for classes to be different.
 - Faculty expectations may seem more or less rigorous than your previous institution, or you might just be taking more advanced classes than you have in the past.
- Introduce yourself to your professors and ask them questions in and outside the classroom.
 - Each course syllabus should include your professor's contact information and office hours.
 - Let your professors know you are a transfer student and are doing your best to fully adjust.
- Get tutoring and attend time management and study skills workshops, if needed.
 - Visit the Altshuler Learning Enhancement Center (A-LEC). smu.edu/alec
- Don't expect an instant group of friends – it takes time and effort to meet people.
 - Talk to other students in your classes and form study groups. Offer to share your notes if someone has to miss a class.
- Meet regularly with your academic advisor and keep track of your major and graduation requirements.
 - Find out exactly how your credits transferred into SMU and what degree requirements those credits may fulfill.
 - Study the Undergraduate Catalog (from your year of entry) to better understand your intended major. catalog.smu.edu

- Take care of yourself.
 - Try to keep a healthy balance between school and life, and don't hesitate to go to SMU's Dr. Bob Smith Health Center if you are ill or want to talk with a counselor.
- Be persistent about getting the information you need.
 - If one person is unable to help you, find someone else who can and will.
- Don't forget to have fun!

ATTENDING COLLEGE WHILE WORKING FULL TIME

Working full time while taking a full course load in college can be extremely demanding and lead to poor grades. We realize that, for many college students, full-time work is a necessity, not a choice. You may have worked full time while attending a previous institution, but the transition to SMU may present a bigger challenge than you're accustomed to. Not only are you adjusting to a new campus, but you also may be taking more rigorous upper-level courses than you have in the past. Strategies that worked for you before may not work as well for you at SMU, and you may need to reassess your work-school balance to give yourself the best chance for academic success. Consider the following questions:

- Can you replace some of your earnings with financial aid to free up the time and energy you need for your coursework?
- Is success more feasible if you work and study part time instead of full time, even if it delays your graduation?
- Will your employer allow you to take time off during crunch times like midterms and finals?
- Since most classes are offered between 8 a.m. and 5 p.m., how can you schedule your work hours and classes to make the best use of your time?

Workshops are offered in the Altshuler Learning Enhancement Center to help you learn effective time management and study skills necessary to maintain the delicate balance between school and work. Your academic advisor can help you identify the most appropriate courses for you and your academic goals, and your financial aid counselor can help answer financial aid and budgeting questions.



ORGANIZATIONAL TIPS FOR COMMUTING STUDENTS

Attending school without a home base on campus can be tricky for the commuter student, but SMU and past and current transfer students have created solutions for some of the typical problems faced. Below are some common frustrations and ways that our students have resolved them.

TYPICAL CHALLENGES

- At-home demands conflict with campus activities.
- Commute time cuts into study time.
- Course materials are not on hand when needed for studying, whether on campus or at home.
- School supplies are difficult to keep organized when everything is kept in a backpack.

SUGGESTED SOLUTIONS

- Create a “desk in the car” to keep all your materials handy, both at home and on campus.
 - Use a file box with a folder for each course to organize notes, syllabi, handouts and papers. A separate carton can hold all texts, library books, etc.
- Reserve a locker in the library.
- Use recording software to turn long drives into hands-free study time.
 - Record yourself reading notes and material that must be learned for class. Reading aloud boosts your concentration and comprehension of the material, and hearing it repeated in your own voice reinforces the ideas.
- Learn to study on the run.
 - If you have a test coming up or an assignment due, keep some of the necessary materials with you so that free moments can be spent studying or making progress toward completing different tasks.
- Set aside time each term for campus events, and commit to attending and participating in at least one.

- Treat college like a full-time job: that’s 15 credit hours of classes and 30–45 hours of studying each week. You can earn good grades, enjoy life and have weekends off!
- Use the facilities and services on campus to make life as a commuting student easier.
 - Use resources available to you through your affiliation with your Residential Commons.
 - In Hughes-Trigg you can find a post office, Copy Central, Wi-Fi, Chick-fil-A, Panera, The Market and Sushic.
 - SMU participates in a DART Higher Education Pass Program, and all currently enrolled students are eligible to receive an annual DART transit pass through the Parking and ID Card Services Office located in Hughes-Trigg.

Need more ideas? Call the Altshuler Learning Enhancement Center at 214-768-3648.

TRANSFER CONNECTION POINTS

There are several organizations on campus designed to help transfer students connect with each other.

MUSTANG TRANSFERS

The purpose of the Mustang Transfers Organization is to provide educational and social opportunities for SMU transfer students. Primarily, the goal of the organization is to facilitate the transition for new students matriculating into the University by creating networks to other organizations, clubs and students on campus. Mustang Transfers has operated on campus for over 10 years. Follow @smumto on Instagram.

MILVETS

The United States Military Veterans of SMU – or SMU MilVets, for short – is the student veterans organization on campus. The MilVets celebrated 10 years as a student organization in October 2021 and in their decade on campus, they have contributed immensely to the SMU culture by being a regular on the Boulevard, in addition to hosting social, professional and volunteer-based community service events at SMU and in the larger Dallas community. Membership to the MilVets is open to both undergraduate and graduate students. smu.edu/Milvets





ACADEMIC ENGAGEMENT

ACTIVE LEARNING

Your college education is distinctly and uniquely yours. Unlike high school, where your teachers and parents largely governed your academic work, in college you choose your classes, you choose your major and you choose how you pursue your work. Here, you are – or should be – in control of your academic life. Much of high school involves “passive learning” (soak in, sit back) – but to succeed in college you need to become an active learner.

As an active learner you will:

- Participate in and contribute to your own education.
- Discuss your studies with peers outside class, visit museums, take in plays and concerts, read unassigned works and go to out-of-class lectures and discussions.
- Seek out professors. Seek out peers. Seek out information about things of which you have little or no present knowledge.
- Question everything and demand that those around you collaboratively develop answers.
- Think about how things you know in one area (say, art) relate to things in other areas that seem completely different (say, economics).
- Eschew the easy path of simple memorization and regurgitation. Reject the notion that a grade is the end point of a class.
- Define what your time at SMU will mean. Although you never will stop actively learning, you never will have as many opportunities to develop the attitude, the knowledge and the skills that will inform and enhance the rest of your life as you will during your time in college.

TIME MANAGEMENT

Your ability to manage time is a better predictor of college grades than your high school GPA, SAT/ACT results or IQ score. So keep these factors in mind:

Three hours of classes per day This is the average amount for SMU students. Compare that with seven to eight hours per day for high school. That leaves you more time to use thoughtfully.

Six-plus hours of studying per day Most college professors expect you to study two to three hours for every hour of class – and more for pre-health or pre-engineering. If 75% of what you learned in high school happened in class, college is the reverse: 75% will be what you learn outside class.

Plan ahead An all-nighter the day before your midterm won't work if you had six weeks to study 12 chapters in one text and 20 documents in another book, and you haven't started any of it. Regularly check your syllabi for big projects and tests that require you to do more than what's covered in class.

Everything else that makes college great College offers the freedom and the independence to balance your academic work with friends, social events and campus involvement. That can be tough if you double major, major in the performing arts, pursue the Honors program, take a leadership position in a student organization, participate in athletics or have a part-time job. But

you can find the combination that gives you what you need to be happy – and learn all the skills you'll need after college.

Don't forget to sleep If you get less than six hours a night, you're more likely to feel tired, sad and stressed. Try to get at least eight hours a night so that you can get the most out of the hours you're awake – whether you're studying or having fun.

We're ready to teach you time management When you come to campus, visit the A-LEC. See how students utilize the popular “Semester at a Glance” tool. Then plan to visit the A-LEC during the first week of the term to attend a time management workshop, or make an appointment with an A-LEC learning specialist to make the most of the tools available.

ACADEMIC INTEGRITY

Your SMU degree is the school's testimony that you have earned it by adhering to the highest standards of academic integrity. Central to the value of that degree is the recognition that the work done to earn it is unquestionably the personal work of its graduates. We all have a stake in maintenance of the highest standards of academic honesty, integrity and excellence, and you are central to the preservation of the good name of the SMU degree – for you and for all others who have studied and will study here.

Intellectual integrity and academic honesty are fundamental to the processes of learning and evaluating academic performance, and maintaining them is the responsibility of all members of an educational institution. The inculcation of personal standards of honesty and integrity is a goal of education in all the disciplines of the University.

Remember that SMU requires you to take an online Academic Honesty Tutorial before you begin your first term. (Students who don't take and pass the tutorial during their first term will have an enrollment hold placed on their my.SMU account.)



COMMUNICATING WITH PROFESSORS

Your college professors are experts. Their jobs include research or creative work, administrative and committee work and more. Teaching isn't the only thing they do, but they do find great satisfaction in sharing their intellectual or creative interests and skills with interested learners. They want you to produce the best work you can. So don't be afraid to ask for help; your professors are not adversaries; they're potential mentors.



DEGREE PLANNER

Students are highly encouraged to use the "Degree Planner" tool in their student dashboard in my.SMU to help map out their journey to graduation.

This planning tool gives a more accurate and personalized plan for students by pre-populating and providing a sequence of courses that will fulfill their degree requirements.

The Office of General Education's Peer Academic Leaders (PALs) offer Degree Planner workshops for students throughout the academic year for support. For more information visit the events page at smu.edu/pals.

PEER ACADEMIC LEADERS (PALs)

The Peer Academic Leaders (PALs) understand that the transition to college can be hard. In addition to classes, there are clubs, jobs, campus events and so much more. Not only that, you're also meeting new people and trying to find a sense of belonging on campus. Whether you're a pro at juggling all these things or need guidance, your PALs are here to help!

The PALs are a diverse group of undergraduate students with a goal to help students better understand the Common Curriculum, utilize academic resources and navigate academic challenges. PALs work directly with students in their Residential Commons, empowering them to take ownership of their collegiate careers through mentorship and educational programming.

You can learn more about the PALs by going to smu.edu/pals or by following them on Instagram @[pals_smu](https://www.instagram.com/pals_smu). Don't do academics alone – find your PAL!





REGISTRAR ESSENTIALS

UNIVERSITY REGISTRAR

The University Registrar keeps your academic records. Information about transcripts, enrollment, academic calendars, degree progress, catalogs, AP/IB and other credit, graduation and diploma services and Veteran Affairs are found at smu.edu/registrar.

COMMUNICATION

- The Student Dashboard in my.SMU, our student information database, allows you to navigate through your educational experience. Enroll in the online password reset tool located at smu.edu/password, which allows you to reset or change your password.
- All official SMU communication is sent to your SMU email account, so check it regularly. To access your email, log in to webmail.smu.edu using your SMU ID number.
- Personal information in the my.SMU Student Dashboard must be verified each enrollment period to avoid a hold on your enrollment. See the Enrollment and Academic Records section of the **Undergraduate Catalog** for more information (section heading "Email and Mailing Addresses, Telephone and Emergency Contact").

INCOMING CREDIT

- Advanced Placement and other test credits are accepted by SMU based on your test scores and must be sent prior to or during your first term of enrollment. smu.edu/registrar/apcredit
- Post-matriculation, SMU accepts transfer credit from other colleges and universities with prior approval from your advisor and the individual SMU school records offices.
- The Degree Progress Report (DPR) is a tool that details your progress toward your SMU degree requirements. To understand your DPR and learn how to request it, visit smu.edu/oit/services/mysmu/studentessentials.
- Request an official transcript at smu.edu/registrar/transcript.

GRADING AND ACADEMIC ACHIEVEMENT

- Early and Midterm Progress Reports are available in the my.SMU Student Dashboard. Click on Academic Records to view reports. These reports are visible until the final grade rosters are generated.
- Final grades are provided through the my.SMU Student Dashboard.
- The Final Exam Schedule is posted at smu.edu/enrollment/services/finalexamschedule.
- To calculate your grade point average (GPA), visit smu.edu/enrollmentservices/gpacalc.
- The University Honor Roll is published for the fall term in February and for the spring term in July. smu.edu/honorroll.
- All undergraduates are required to make regular and satisfactory academic progress toward their degrees. Graduation in four years requires the accrual of at least 30 academic term hours per year and a cumulative GPA of at least 2.00. Visit catalog.smu.edu; see the "Academic Advising and Satisfactory Progress Policies" section in the Undergraduate Catalog (from your year of entry).

POLICIES AND PROCEDURES

- Students may seek a waiver of a certain policy or appeal an academic decision. The Committee on Academic Petitions (CAP) handles these appeals.
- If it ever becomes necessary to withdraw from all of your classes, visit smu.edu/leaverequest to complete a withdrawal and leave of absence form.
- You may receive a grade of Incomplete (I) in a course if you complete at least 50% of the requirements with passing grades but are unable to complete all of the requirements due to a justifiable reason acceptable to the instructor. More information regarding a grade of Incomplete is available at catalog.smu.edu. Click on "Undergraduate Catalog," "Enrollment and Academic Records" and then "Grade Policies."
- Students may repeat up to six courses taken at SMU for which grades of D+ or lower were received. Under the Grade Replacement Repeat policy, the grade from the repeated course, even if lower, will be the grade used to calculate the student's GPA. A course may be repeated only once under this policy. Specifications and limitations are found at catalog.smu.edu. Click on "Undergraduate Catalog," "Enrollment and Academic Records" and then "Grade Policies."
- The Family Educational Rights and Privacy Act (FERPA) is a federal law that grants you the right to inspect, obtain copies of, challenge and control the release of information contained in your education records. smu.edu/ferpa

CLASS ENROLLMENT

- All new incoming students must submit the SMU Health History Form (aka SMU Health Form) which includes your Meningitis A vaccination documentation (Texas requirement) upon admission. Review requirements and how to submit at smu.edu/healthform. Failure to submit this form and required vaccination documentation will prevent enrollment in classes.
- Class enrollment is completed online through the my.SMU Student Dashboard after completing the PACC and meeting with your advisor. More information can be found at smu.edu/registrar/enrollment.
- Enrollment holds prevent students from enrolling in classes until certain requirements are met. Explanations for holds are found in the my.SMU Student Dashboard under the "Holds" widget.
- After enrolling, you may find it necessary to add or drop a course. Tutorials on adding/dropping courses can be found at smu.edu/oit/services/mysmu/studentessentials. Also, pay close attention to the add/drop deadlines for each term.
- See the 2024–2025 Official University Calendar for deadline information at smu.edu/AcademicCalendars/24-25.
- To request an official Enrollment Verification, visit smu.edu/registrar/verification.

ENROLLMENT 101

START YOUR SEARCH

Advanced Class Search Allows you to search for specific courses as well as for courses that fulfill Common Curriculum requirements.

Shopping Cart Enrolling is like shopping online. The Shopping Cart is where you add classes you're interested in prior to actually enrolling.

Schedule Builder A planning tool based on building a class schedule prior to enrolling. This is a good option if the courses you're interested in offer multiple sections.

Credit Hours Each course is assigned a certain number of credit hours. Most are 3 credits. You can determine the number of credit hours a particular course is worth by referencing the second digit in the course number. For example, WRTR 1312 is a 3-credit course and UNIV 1210 is a 2-credit course.

Full-time status You will need to be enrolled in 12 credits to be considered a full-time student. Most students enroll in an average of 15 credits per term.

Section Some courses have multiple sections – the same topic is being taught at different times or by different faculty members. For example, there are 11 different sections of the Microeconomics course.

Subject When you're searching for classes, this is the abbreviated form of the topic being studied. For example, Art History's subject is ARHS.

Catalog # The course number (not to be confused with class number). You will see the catalog number next to the course subject. For example, ARHS 1300.



ENROLL IN CLASSES

Add Officially enroll in a class.

Drop Remove a class from your schedule. Be careful, once you drop a course, you may not be able to add it back! If you want to switch one of your courses for a new one, try using Swap Classes instead.

Swap Switch a course on your schedule with a different course or a different section of the same course. Swapping classes is a good way to adjust your schedule, because you keep your spot in your original class until the swap is successful.

Waitlist If a class is full when you attempt to enroll, you have the option of joining the waitlist. To find a course that has a waitlist, uncheck the box next to "Show Open Classes Only." Please note that not all sections will have the waitlist option. You can join the waitlist for a maximum of 6 credit hours.

Waitlist Swap This function allows you to automatically drop a class from your schedule if you're enrolled from the waitlist into another course.



ENROLLMENT HACKS

Be patient Putting together a schedule can sometimes feel like putting together a puzzle!

Be open minded Explore new subject areas and topics; be willing go outside your comfort zone.

Be flexible Be open to taking classes at different times. It is usually a good idea to have several course and section options ready in your Shopping Cart.

Check out Degree Planner Explore this planning tool to help visualize course possibilities and sequences for your degree requirements. You can import courses from Degree Planner into your Schedule Builder.



TROUBLESHOOTING

Hold A restriction placed on your account by an SMU office that prevents you from enrolling in classes. If you click on the hold, you will see instructions on how to clear it.

Corequisite A course you need to complete along with another course.

Prerequisite A course you must complete before enrolling in another class.

Reserved Seats Seats in courses that are reserved for a particular group of students. Good news – we've saved seats for you! If you see open seats reserved for Mustang StartUp students, you can enroll.

Unreserved Seats Seats in courses that anyone can enroll in (as long as you meet the prerequisites).

Time Conflict My.SMU will not let you enroll in two courses that meet at the same time. If you see this error message, you should find another course or another section that meets at a different time.





RESOURCES AND OPPORTUNITIES

REACH YOUR POTENTIAL

Student Academic Success Programs

ALTSHULER LEARNING ENHANCEMENT CENTER (A-LEC)

smu.edu/SASP

202 Loyd All-Sports Center

Whether you are just out of high school or transferring in from another college, expect your SMU courses to be more challenging in many ways: more assigned reading, fast-paced lectures and fewer tests that cover much more material and count more heavily. Professors expect you to work independently, keep up with assignments, connect readings with lectures and think critically.

About 75% of all entering students learn how to excel by taking advantage of the programs offered. You'll see top students aiming for high grades to get into law or medical school or to keep scholarships. Others want a solid GPA while also juggling leadership positions in campus organizations, double or triple majors, varsity athletics or internships and part-time jobs. The following services are available at the Altshuler Learning Enhancement Center (A-LEC):

Individual Academic Counseling

smu.edu/AcademicCounseling

Maybe you struggle to take notes in rapid lectures or you study hard for your first midterm, aiming for an A, only to be surprised by the test – and your grade. Talk to your professors; then make an appointment to see a learning specialist in the A-LEC. We can teach you new reading and learning strategies to apply directly to your specific challenges in your courses. Meet with us once or twice to address specific issues or throughout the term to develop an individualized system for success.

Tutoring

smu.edu/Tutoring

Your professors are your primary source of support, but working with A-LEC tutors can be an important way to study smarter, not harder. The A-LEC provides tutoring at no additional cost in almost all first- and second-year courses and many upper-level ones. Because they are SMU students, mostly juniors and seniors, our tutors often know your professors, textbooks and assignments. To get the most from tutoring, come in early and often. Tutors help not only students who may be struggling – many students come for tutoring because they are doing well – earning a B or B+ – but really want an A.

Academic Success and Personal Development (UNIV 1210)

smu.edu/UNIV1210

Consider enrolling in UNIV 1210, Academic Success and Personal Development, a 2-credit elective course, to upgrade all your reading and learning skills. This course is a great fit for challenging courses in engineering or pre-health; courses with heavy reading loads, such as history, political science and psychology; or the extra-busy schedules of performing arts majors, students with part-time jobs, leaders of student organizations and student-athletes. One fall section is reserved for students with learning differences. Once a year, there is a section reserved for transfer students. Online sections are also available.

Learning Strategies Workshops

smu.edu/SASPWorkshops

Because college courses demand a great deal from you, it's time to learn strategies for true long-term learning of new material. Every term the learning specialists offer drop-in, one-hour sessions on key topics such as time management, note taking, study-reading, test preparation, test taking, memory, concentration, managing stress and test anxiety, and even preparing for final exams. There are workshops designed specifically for first-year students and transfer students. You'll work with a learning specialist and other students to discuss new strategies you can use to learn more easily and effectively. Most workshops are held at the A-LEC. Learn more on page 32 of the *Peruna Passport*.

Writing Center

smu.edu/WritingCenter

Whether you need help understanding a writing or reading assignment, starting the writing process, revising a draft in progress or applying your instructor's comments to subsequent assignments, the faculty members who staff the Writing Center can be an important source of guidance to help you become a more confident writer. Writing Center faculty are available by appointment for 30-minute, one-to-one tutorials (in person and virtual) for help on speeches, labs, reports, research papers, and applications. To allow yourself ample time for revision and a conference with your instructor, schedule well in advance of the assignment date. Appointments are made through your Canvas account.

Writing Center faculty also are available during drop-in hours for quick questions about your work-in-progress, and they supervise a drop-in Writing Lab where you can work on your assignment



in a quiet environment with a faculty member nearby to answer questions or provide direction.

Disability Accommodations and Success Strategies

smu.edu/DASS

Students who seek services and accommodations on the basis of a disability should self-identify to the Office of Disability Accommodations and Success Strategies (DASS) and provide appropriate documentation about the current impact of the condition on their functioning. DASS works with individuals with different kinds of conditions, including learning disabilities, ADHD, physical/mobility issues, hearing and visual impairments, psychiatric conditions and others. In addition, students with learning disabilities and ADHD may benefit from the support of DASS Learning Specialists. They provide individual academic coaching focused on improving learning and study skills, time management, organization and self-advocacy. For more information, visit smu.edu/DASS or call 214-768-1470.

FIRST-GENERATION INITIATIVE

smu.edu/FirstGenerationInitiative

The First-Generation Initiative (FGI) was established in 2019 to ensure academic success for first-generation SMU students, or those who are the first in their family to attend a postsecondary institution.

A first-generation student is any student where neither parent or guardian obtained a four-year degree. As a result, these students may have little or no experience or access to the resources for navigating the academic, financial and cultural barriers within higher education. These are barriers we seek to address and help students overcome with our initiative. Being a first-generation college student is a proud accomplishment.

If you are a first-generation student, we want to welcome you. SMU recognizes the unique experiences you will have as you begin (or continue) this exciting journey on the Hilltop. We look forward to supporting you!

ACADEMIC DEVELOPMENT OF STUDENT-ATHLETES (ADSA)

smu.edu/adsa

316 Loyd All-Sports Center

Appreciating that SMU NCAA Division I student-athletes commit to representing the University and thus face the unique challenge of balancing academic and athletic objectives, the Academic Development of Student-Athletes (ADSA) provides mentoring, supplemental academic support, designs and implements individual and team academic support plans, and facilitate the



development of core and executive functioning skills. The ADSA also maintains an active presence in the university community to facilitate student-centered dialogue with various campus entities. Working closely with academic colleges and advisors, ADSA counselors also support academic program selection and navigating NCAA eligibility requirements. The ADSA further promotes high academic standards and equips student-athletes for future success beyond athletics.

ADSA counselors extend their support beyond the campus, traveling with teams to facilitate academic support during road competitions. Academic counselors, tutors, and interventionists act as holistic advocates for student-athletes as they navigate academic challenges, understand their educational goals, and succeed in their academic careers. Located on the 3rd floor of the Paul Loyd All Sports Center, this department supports approximately 500 undergraduate and graduate student-athletes across all 17 teams.



BROADEN YOUR EXPERIENCE

OFFICE OF ENGAGED LEARNING

smu.edu/engagedlearning

G03 Clements Hall

When you engage in research, creative projects, mentoring, service, internships and entrepreneurial activities, you will have enhanced academic experiences at SMU. The Office of Engaged Learning provides you with opportunities to pursue your interests and passions outside of the classroom.

The **Engaged Learning Fellowship** supports capstone-level projects in research, creative activity or civic engagement. Fellows receive a transcript notation and up to \$2,500 to fund their projects. Visit smu.edu/ELF.

For first-year and transfer students, the **Engaged Learning Starter Award** provides \$500 to pursue a small research or creative project. Visit smu.edu/ELSA.

Big iDeas encourages innovative products and services. The fall Big iDeas Pitch contest awards up to \$1,000 to seed fund ideas. The spring Business Plan Competition awards up to \$5,000 for each business. Big iDeas winners receive training and mentorship from seasoned entrepreneurs. Visit smu.edu/BigiDeas.

The **Clinton Global Initiative University** network (CGI U) challenges students to address critical global needs. Selected "commitment-makers" attend an annual meeting that brings together students and thought leaders from around the world. These students participate throughout the year in social entrepreneurship programming with high quality mentoring. Visit smu.edu/CGIU.

You can find success in business without a business degree. When you are a part of **Pathways to Business and Industry**, you will receive exclusive support from key campus partners. Explore a major. Find an internship. Grow your network. Start a company. Set yourself on a course that is just right for you and your future goals. Visit smu.edu/PBI.

Through **Mustang Mentors**, first-year students can connect with a peer mentor. Mustang Mentors facilitates matching and communication to enrich the first-year experience at SMU. Find your fit at smu.edu/mustangmentors.

The **Undergraduate Research Assistantship** program provides paid opportunities for students to acquire research skills by working under a faculty mentor. Many students have collaborated on projects leading to conference presentations and publications. During the **Summer Research Intensive**, students continue their



research and participate in workshops on research skills and professional development. Visit smu.edu/undergradresearch.

The Office of Engaged Learning produces two showcases of student work: the **Fall Research Symposium** and **Research & Innovation Week**. Outstanding student work is published in the **SMU Journal of Undergraduate Research**. Visit smu.edu/undergradresearch.

OFFICE OF NATIONAL FELLOWSHIPS AND AWARDS

smu.edu/NationalFellowships

G02AC Clements Hall

Are you considering a career in scientific research or the Foreign Service? Looking for an immersive experience in another country? SMU's Office of National Student Fellowships supports SMU undergraduate students and recent graduates in applying for external, nationally-competitive fellowships and scholarships that provide opportunities for international education, support graduate study and build professional experience. The office holds information sessions to expand awareness of awards such as the Rhodes, Marshall, Fulbright, Truman, Goldwater, Gilman and many others, and offers one-on-one guidance throughout the application process. Contact Dr. Brandon Gray Miller at bgmiller@smu.edu to learn more about the awards that can help you reach your goals.



HART CENTER FOR ENGINEERING LEADERSHIP

smu.edu/lyle/centers-and-institutes/hart

253 Caruth Hall

The Hart Center for Engineering Leadership is dedicated to Lyle students' success in college and well into their professional careers. Our career and leadership development programs provide opportunities for Lyle students to gain valuable communication, decision making and self-awareness skills to complement their technical learning and launch successful careers. The Leadership offerings include Lyle's Professional and Peer Mentorship Programs, Student Engineering Joint Council Leadership Retreats, Leadership Speaker Series and Lyle Engineering in the City community engagement projects. Linda Parker, the Career Development Director, oversees on-campus employer recruitment for Lyle Engineering, the Fall and Spring Engineering Connections Career Fair, Mock Interview Day, Resumania and company information sessions that facilitate internships and full-time employment opportunities.

HEGI FAMILY CAREER DEVELOPMENT CENTER

smu.edu/career

126 Hughes-Trigg Student Center

The Hegi Family Career Development Center at SMU is dedicated to serving the needs of SMU students and alumni and assisting employers in reaching qualified candidates from SMU. The staff at the Career Development Center guides and encourages students and alumni in the development of skills necessary for lifelong career management and offers opportunities for employers to recruit students through campus events and online resources. Counselors will assist students in identifying career options through exploration of their interests, values, personality, strengths and experiences. The Employer Relations Team (ERT) develops partnerships with employers to provide resources to connect students in mutually beneficial working relationships. The Hegi Family Career Development Center sponsors many employer functions designed to introduce students to workplaces, careers and employment options, including panels, networking events, externships and career fairs.

SMU ABROAD

smu.edu/abroad

216 Blanton Building

In a globalized economy, employers increasingly demand job candidates with intercultural competence. Studying, interning and researching abroad builds global experience, which is an integral part of an undergraduate education. The SMU Abroad Office serves the SMU community by developing and coordinating international programs, and by providing support services during and after the experience abroad.

Students at SMU have the opportunity to participate in a wide range of January, May, summer and term abroad programs, including academic programs that yield University Curriculum



and Common Curriculum credit, major-specific programs, internships and guided research. These programs may be faculty-led, SMU approved affiliated, hybrid or virtual abroad programs. Students studying, researching or interning abroad encounter diverse global communities and intellectual traditions. SMU Abroad programs and global partnerships enhance academic and experiential learning around the world.

Students considering study abroad are urged to meet early and often with both their academic advisor and SMU Abroad advisor. This advising input is essential in integrating study abroad coursework into a student's four-year plan of study.



SMU-IN-TAOS

smu.edu/taos

216 Blanton Building

Your destination is SMU-in-Taos, SMU's beautiful 423-acre campus in Taos, New Mexico. SMU-in-Taos offers credit courses in the arts, the sciences, business and other disciplines in an inspirational setting designed for adventurous learners on top of the beautiful mountains. Earn credit hours during short terms in January, May, June and August. SMU-in-Taos provides a unique campus for experiential learning and cultural immersion right here in the United States with small class sizes, a living-learning community and an opportunity to take Mountain Sports for credit.

SMU INTERSESSIONS

smu.edu/intersessions

216 Blanton Building

SMU Intersessions allow you to take additional Dallas-based courses outside of Fall and Spring terms in a smaller class setting. Complete one course in as little as eight class days in Jan Term or in just 11 class days in May and Summer terms. During the Summer, you can complete up to 7 credit hours in June sessions and 7 credit hours in July sessions. Courses are offered in either 22 or 11 class day formats. Some online courses also are available in Jan Term and Summer, each approximately one month in duration. Choose



SMU Intersessions



from some 350 courses fulfilling Common Curriculum (CC), major, minor or prerequisite requirements. Whether your goal is to get ahead of the curve, explore new interests or simply stay on track for graduation, Intersessions let you customize your experience and make the most of your academic career. Enjoy increased flexibility in your academic planning, and fit in courses around your holiday plans, summer work or internship!

ENGAGE DALLAS

smu.edu/engagedallas

Engage Dallas is a place-based community engagement initiative offered through SMU's Residential Commons to address community needs focusing on South and West Dallas. The initiative is a long-term, university-wide commitment led by students to partner with local residents, organizations and other leaders to positively impact the community. Engage Dallas is a great, easy and fun way to make new friends in the Residential Commons, get to know the City of Dallas and earn your Community Engagement (CE) and Civics and Individual Ethics (CIE) proficiencies required for graduation.

All students are invited to participate in Engage Dallas' 2-in-2 campaign – complete 2 graduation proficiencies in the first 2 years on campus!

Get started today with the steps below. Students who complete steps 1–3 before arriving to campus can sign up to receive the official Engage Dallas t-shirt upon move in!

1. Log into Canvas and select the Engage Dallas course at smu.instructure.com
2. Watch the Basics video
3. Complete the Groundwork Training
4. Arrive on the Hilltop
5. Serve West and South Dallas

NEW STUDENT ORIENTATION

smu.edu/orientation

Stampede

This is a multiday welcome event before the start of the new semester. Stampede will take place with pre-orientation activities open to students and families. Stampede Guides will show you around campus and introduce you to the other new Mustangs on the Hilltop as you participate in events like Kick Off, Academic Explorations, Home Sweet SMU, Stampede Sundown, Discover Dallas, and the iconic Rotunda Passage and Convocation.

SMU360

SMU360 is our campus engagement platform, and is a great place to learn about clubs and organizations, campus events and other resources! Students, faculty and staff can connect with each other and share important information for all sorts of initiatives and interests. We look forward to seeing you on campus and connecting at smu.edu/smu360!

PRE-PROFESSIONAL ADVISING

Pre-Health Advising

smu.edu/prehealth

The Office of Pre-Health Advising serves undergraduate students throughout the University who wish to pursue graduate study in dental, medical, optometry, pharmacy, physical therapy, physician assistant and veterinary medicine. The program provides individual



and group advising, workshops, guest speakers, shadowing, curriculum recommendations and connects students to on-campus organizations and resources. The Office of Pre-Health Advising works primarily with students of sophomore standing and above who are actively in the process of applying to professional schools.

The Office of Pre-Health Advising encourages incoming first-year and transfer students to sign up for the Pre-Health listserv at smu.edu/Pre-Health-ListServ to receive information about Pre-Health resources and events. Incoming First-Year and Transfer students should attend the Pre-Health 101 event.

For Academic Advising prior to major declaration, pre-health students will work with their assigned pre-major advisor. All UAC advisors are equipped to advise students pursuing a pre-health track and can help them in building/changing schedules, adding/dropping classes, exploring major/minor interests and creating four-year Pre-Health plans.

Prelaw Advising

smu.edu/prelaw

Prelaw students may declare a major in any discipline or field. Success in law school requires skills in critical analysis, logical reasoning and written and oral expression.

The prelaw program is designed to:

1. Help students investigate whether the law is truly their path.
2. Connect prelaw interested students with a community of students also pursuing the law.
3. Prepare students to be successful law school applicants.
4. Provide prelaw resources for registered prelaw students

To be connected with prelaw advising, fill out a brief interest form at smu.edu/prelaw and attend a one-time information session, Prelaw 101 during your first term at SMU. For Academic Advising prior to major declaration, prelaw students will work with their assigned pre-major advisor. All UAC advisors are equipped to advise pre-majors pursuing a prelaw track.

2024–2025 CONDENSED ACADEMIC CALENDAR

FALL TERM 2024

August 26–December 21, 2024

May–August Virtual Orientation experiences for new first-year and transfer undergraduate students. More information about Virtual Orientation is available from the Office of the Student Experience, Student Affairs, 214-768-4560, smu.edu/newstudent.

August 25, Sunday Opening Convocation, McFarlin Auditorium.

August 26, Monday First day of classes.

August 30, Friday Last day to enroll, add a course or drop a course without tuition billing while remaining enrolled for the term.

September 2, Monday Labor Day. University offices closed.

September 9, Monday Last day to drop a course without academic record (**tuition charges apply**). Last day to withdraw from the University without academic record (**withdrawal refund schedule applies**). See Bursar's website for more information.

September 11, Wednesday Last day to declare no-credit grading option for a course (see UG catalog for specific information). Last day to request an excused absence for the observance of a religious holiday. Last day to file for graduation in December.

September 27–28, Friday–Saturday Family Weekend.

October 1, Tuesday Early intervention grades due for undergraduate students. Degree Planner completion required for undergraduate students.

October 7–8, Monday–Tuesday Fall Break

October 28, Monday Midterm grades due for undergraduate students.

November 1–2, Friday–Saturday Homecoming Weekend.

November 4, Monday 60% point of the term that federal financial aid has been earned if a student officially withdraws from SMU; prior to this date a partial calculated return to federal programs will be required.

November 4–22, Monday–Friday Enrollment for spring 2025 continuing students for all undergraduates and graduates in Dedman College, Lyle, Meadows and Simmons.

November 26, Tuesday Last day to declare a course pass/fail (see UG catalog for specific information), drop a course (grade of W), and/or withdraw from the University (grades of W). (*This date does not apply to courses in which the last class meeting and final exam have occurred.*)

November 27, Wednesday No classes.

November 28–29, Thursday–Friday Thanksgiving holiday. University offices closed.

December 4–9, Wednesday–Monday No final exams or unscheduled tests and papers.

December 9, Monday Last day of classes.

December 10–11, Tuesday–Wednesday Reading days.

December 12–18, Thursday–Wednesday Exams. (No exams scheduled for Sunday).

December 19, Thursday Residence halls close at 10 a.m. for winter break.

December 20, Friday December Rotunda Recessional.

December 21, Saturday December Commencement. Official close of term and conferral of degrees.

December 23–January 1, Monday–Wednesday University closed.

December 25, Monday Christmas Day.

JANUARY TERM 2025

December 19, 2024–January 17, 2025

The January Term consists of two primary sessions: Dallas January Session and SMU-in-Taos January Session. Each primary session has different deadline dates. For more information, visit smu.edu/intersessions.

Check Your Dates!

You are expected to be present on all dates when the university is in session through your last exam. Do not schedule travel plans until you know your course meeting times, assignment due dates and your final exam schedule!



SPRING TERM 2025

January 21–May 17, 2025

January Virtual Orientation experiences for new first-year and transfer undergraduate students. More information about Virtual Orientation is available from the Office of the Student Experience, Student Affairs, 214-768-4560, smu.edu/newstudent.

January 1, Wednesday New Year's Day. University offices closed.

TBA Spring Rotunda Passage.

January 20, Monday Martin Luther King, Jr. Day. University offices closed.

January 21, Tuesday First day of classes.

January 27, Monday Last day to enroll, add a course or drop a course without tuition billing while remaining enrolled for the term.

February 3, Monday Last day to drop a course without academic record (**tuition charges apply**). Last day to withdraw from the University without academic record (**withdrawal refund schedule applies**). See Bursar's website for more information.

February 5, Wednesday Last day to declare no credit grading options for a course (see UG catalog for specific information). Also, last day to request an excused absence for the observance of a religious holiday. Last day to file for graduation in May.

February 25, Tuesday Early intervention grades due for designated undergraduate students.

March 1, Saturday Degree Planner completion required for all undergraduate students.

March 17–23, Monday–Sunday Spring break.

March 26, Wednesday Midterm grades due for undergraduate students.

March 31–April 18, Monday–Friday Enrollment for summer 2025 and fall 2025 continuing students for all undergraduates and graduates in Dedman College, Lyle, Meadows and Simmons.

April 3, Thursday 60% point of the term that federal financial aid has been earned if a student officially withdraws from SMU; prior to this date a partial calculated return to federal programs will be required.

TBA Honors Convocation.

April 18, Friday Good Friday. University offices closed.

April 20, Sunday Easter Sunday.

April 28, Monday Last day to declare a course pass/fail (see UG catalog for specific information), drop a course (grade of W), and/or withdraw from the University (grades of W). (*This date does not apply to courses in which the last class meeting and final exam have occurred.*)

May 1–6, Thursday–Tuesday No final exams or unscheduled tests and papers.

May 6, Tuesday Last day of classes. (*Follows a Friday schedule.*)

May 7, Wednesday Reading Day.

May 8–14, Thursday–Wednesday Exams (No exams scheduled for Sunday).

May 15, Thursday Residence halls officially close for non-graduating students.

May 16, Friday Baccalaureate.

May 17, Saturday May Commencement. Official close of term and conferral of degrees.

MAY TERM 2025

May 15–31, 2025

The May Term consists of two primary sessions: Dallas May Session and SMU-in-Taos May Session. Each primary session has different deadline dates. For more information, visit smu.edu/intersessions.

SUMMER TERM 2025

June 2–August 5, 2025

The summer term consists of four primary sessions: Dallas Full Session, Dallas First Session (June), SMU-in-Taos First Session and Dallas Second Session (July). Each primary session has different deadline dates. There are also four shorter sessions within the first and second sessions. For more information, visit smu.edu/intersessions.

AUGUST TERM 2025

August 7–22, 2025

The August Term consists of one primary session: SMU-in-Taos August Session. For more information, visit smu.edu/intersessions.

This calendar is subject to change. Visit smu.edu/academiccalendar for the most up-to-date academic calendars.

LEARNING STRATEGIES WORKSHOPS

Provided by services at the Altshuler Learning Enhancement Center (A-LEC)

LEARN ABOUT



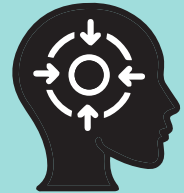
Keys to a Successful Semester

Time Management



Note-Taking and Organization

Concentration and Textbook Reading



Strategic Study Tools and Strategies

Test Preparation



Stress Management and Test Anxiety

Preparing for Finals



SCAN ME



SCAN THE
CODE TO
SEE OUR
WORKSHOP
SCHEDULE.

Watch for it!

Keep an eye out for our sponsored workshops with the Office of Information Technology.

For more information, visit smu.edu/workshopschedule.



IMPORTANT SMU NUMBERS AND WEBSITES

Advising/Records: Cox School of Business

214-768-3195
252 Maguire Hall
smu.edu/bbaadvisingcontact

Advising/Records: Dedman College of Humanities and Sciences

214-768-2298
134 Clements Hall
smu.edu/DedmanRecords

Advising/Records: Lyle School of Engineering

214-768-3039
253 Caruth Hall
smu.edu/Lyle/Academics/Advising

Advising/Academic Services: Meadows School of the Arts

214-768-2754
1120 Owen Arts Center
smu.edu/MeadowsAcademicServices

Advising: Pre-Major (University Advising Center)

214-768-2291
408 Blanton Student Services Building
smu.edu/uac

Advising/Records: Simmons School of Education and Human Development

214-768-1326
234 Annette Caldwell Simmons Hall
smu.edu/simmons/AboutUs/AcademicServices

Altshuler Learning Enhancement Center

214-768-3648
202 Loyd All-Sports Center
smu.edu/alec

Bookstore

214-768-2435
3060 Mockingbird Lane
smu.bncollege.com

Bursar

214-768-3417
120 Blanton Student Services Building
smu.edu/enrollmentservices/bursar

Chaplain and University Ministries

214-768-4502
208 Hughes-Trigg Student Center
smu.edu/chaplain

Counseling Services

214-768-2277
Student Health Center
6211 Bishop Boulevard
smu.edu/healthcenter/counseling

Disability Accommodations and Success Strategies (DASS)

214-768-1470
202 Loyd All-Sports Center
smu.edu/DASS

Emergency/SMU Police

214-768-3333 or 911
212 Patterson Hall
smu.edu/police

Engaged Learning

214-768-3223
G03 Clements Hall
smu.edu/engagedlearning

Financial Aid

214-768-3417
119 Blanton Student Services Building
smu.edu/financial_aid

Hegi Family Career Development Center

214-768-2266
126 Hughes-Trigg Student Center
smu.edu/career

Honor Code

214-768-4563
205 Hughes-Trigg Student Center
smu.edu/honorcode

International Student and Scholar Services

214-768-4475
338 Blanton Student Services Building
smu.edu/international/iss

Intersessions

Jan Term – May Term – Summer
214-768-1009
216 Blanton Student Services Building
smu.edu/intersessions

Libraries, Central University: Ask a Librarian

214-768-2329
Fondren Library Center
askus.smu.edu

New Student Orientation

214-768-4560
201 Hughes-Trigg Student Center
smu.edu/newstudent

Office of the Dean of Students

214-768-4564
205 Hughes-Trigg Student Center
smu.edu/studentlife

Office of General Education

102 Blanton Student Services Building
theccmail@smu.edu
smu.edu/cc

Office of Information Technology Help Desk

214-768-4357
Fondren Library West
smu.edu/oit/help

Parent and Family Programs

214-768-4797
201 Hughes-Trigg Student Center
blog.smu.edu/parents

Pre-Health Advising

214-768-4604
135 Dedman Life Sciences Building
smu.edu/prehealth

Prelaw Advising

214-768-2305
408 Blanton Student Services Building
smu.edu/prelaw

Registrar

214-768-3417
101 Blanton Student Services Building
smu.edu/registrar

Residence Life and Student Housing

214-768-2407
Boaz Hall
smu.edu/housing

SMU Abroad

214-768-2338
216 Blanton Student Services Building
smu.edu/abroad

SMU-in-Taos

214-768-3657
216 Blanton Student Services Building
smu.edu/taos

Social Change and Intercultural Engagement

214-768-4580
218 Hughes-Trigg Student Center
smu.edu/StudentAffairs/SocialChange

Transfer Admissions

220E Blanton Student Services Building
smu.edu/transfer

Transfer and Veteran Services Center

100E Blanton Student Services Building
smu.edu/EnrollmentServices/transfer

University Honors Program

214-768-2813
Clements Hall Basement
smu.edu/uhp

University Testing Center

214-768-6064
G28 Clements Hall
smu.edu/utc

Writing Center

214-768-3648
202 Loyd All-Sports Center
smu.edu/writingcenter

Writing and Reasoning Program

214-768-1406
108 Clements Hall
smu.edu/wrtr



University Advising Center
 214-768-2291
 408 Blanton Student Services Building
smu.edu/uac

SMU World Changers
 Shaped Here